
Direct Card Printer Driver Installation

NiSCA Printers

PR-C151 • PR-C201



TEAMNiSCA, A Division of Kanematsu USA, Inc. 100 Randolph Road, Somerset, NJ 08873
Copyright © 2016, Kanematsu USA, Inc. All rights reserved. Revision Date: July 14, 2016

TEAMNiSCA® and the TEAMNiSCA® logo are a registered trademark of Kanematsu USA, Inc. Microsoft® and Windows® are U.S. trademarks of Microsoft Corporation. Names of products mentioned herein are used for identification purposes only and may be trademarks and/or trademarks of their respective companies.

Table of Contents

Section 1: Printer Driver

1	Printer Driver Installation for the PR-Cxxx Series Printer	3
1.1	USB Installation	3
1.2	Network Installation	6
1.3	Printing a Test Card.....	11

Section 2: Using the Printer

2	Configuring Printer Preferences for the PR-C151	12
2.1	Printer Media Tab.....	13
2.2	Ribbon Tab	14
2.3	Security Tab	16
2.4	About Tab.....	17
2.5	Configuring Printer Preferences for the PR-C201	18
2.6	Printer Media Tab.....	19
2.7	Ribbon Tab.....	20
2.8	Security Tab	22
2.9	About Tab.....	23

Section 3: Configuring Printer Properties

3	Configuring Printer Properties	24
3.1	Device Options Tab.....	25
3.2	Device Properties	26

Section 4: Status Monitor

4	Status Monitor	27
---	----------------------	----

SECTION

1.

Printer Driver

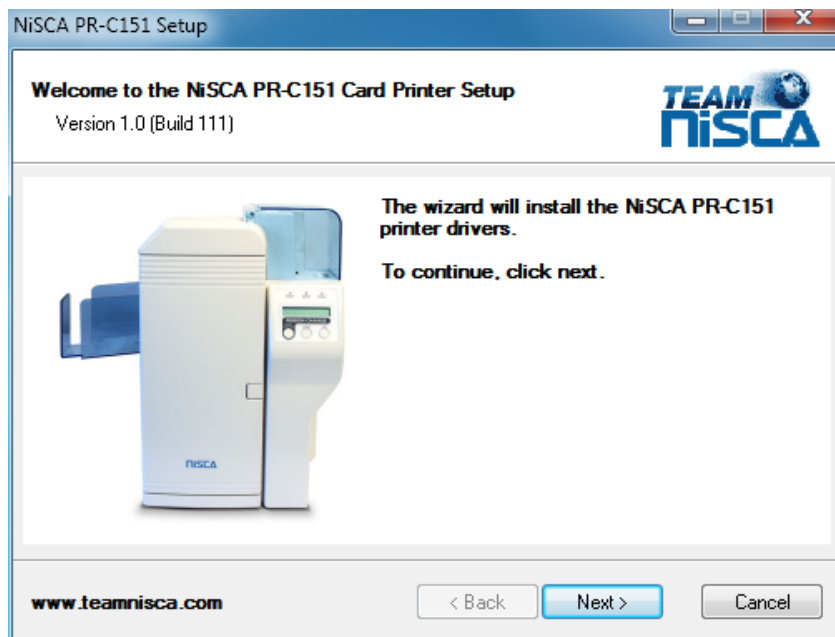
1 Printer Driver Installation for the PR-Cxxx Series Printers

Note Close all applications before installing the driver. To install the driver under Windows® 2000, Windows® XP, Windows® Vista and Windows® 7, 8, 10 (32 & 64bit), you must have Administrator privileges. Be sure to install the driver BEFORE connecting the printer.

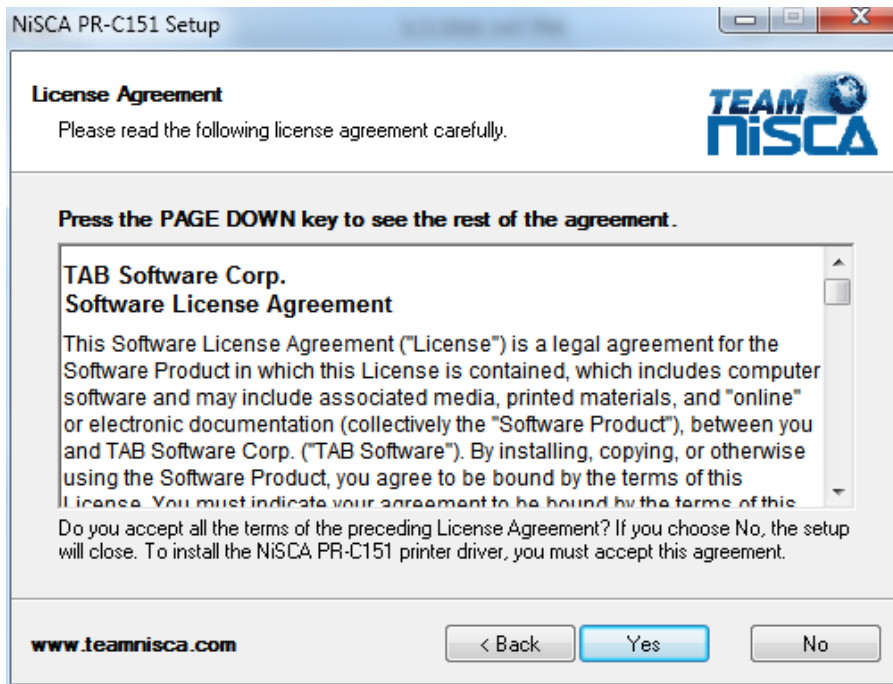
The PR-Cxxx series printer comes with different printer drivers for the Microsoft operating systems. The printer driver is located on the support CD that was included with your printer. To install the driver, follow the instructions below.

1.1 USB Installation

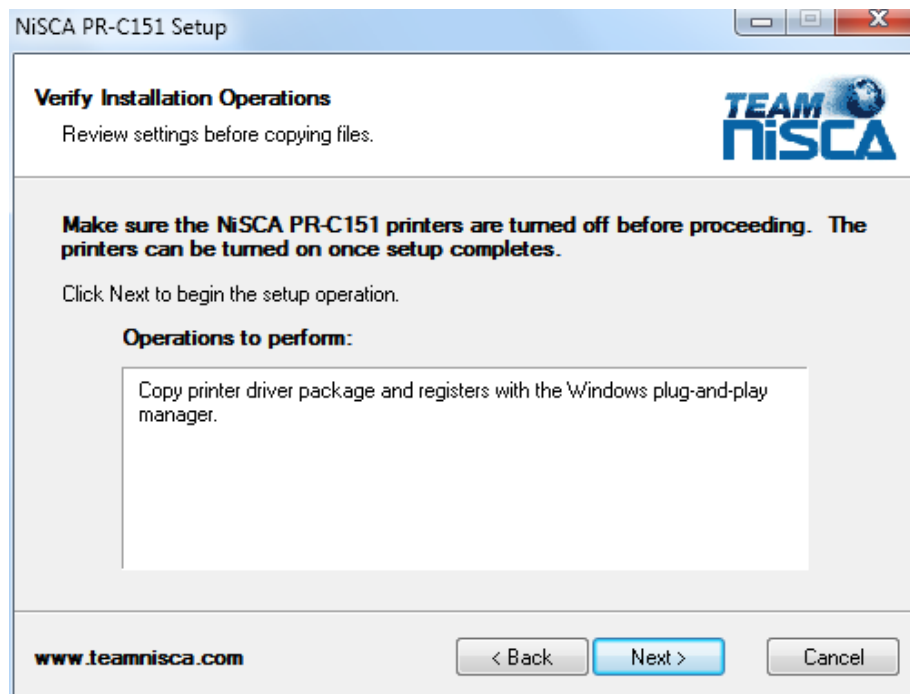
1. Insert the Nisca Support CD into your computer's CD-ROM or DVD drive.
2. Double click on the `nisca_prcxxx_XXX_buildXXX.exe` file where `xxx` represents the printer model and the `XXX` represents the driver version and build number. Click the next button on the Welcome window.



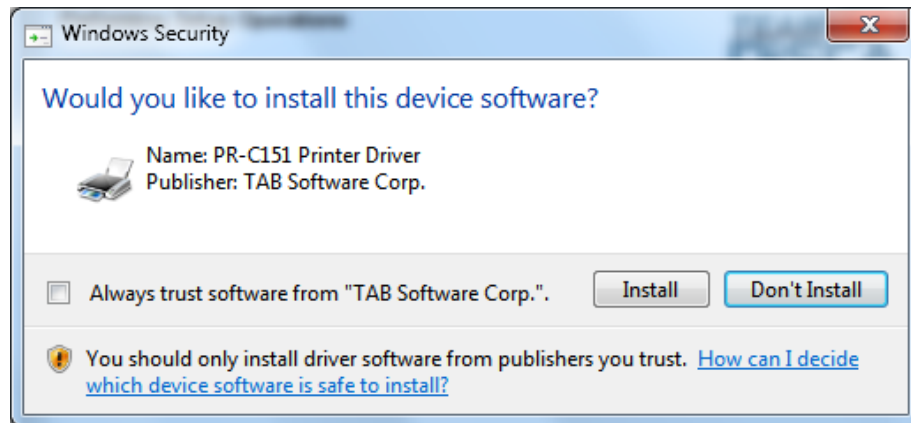
3. Read the license agreement and click **Yes** to accept the terms of the license agreement. If you decline, you cannot install the driver.



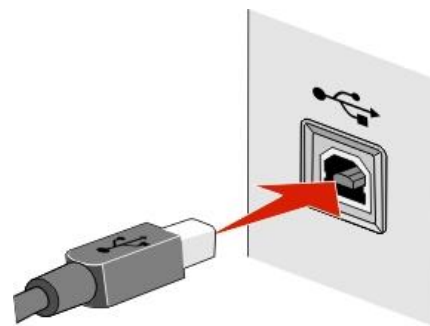
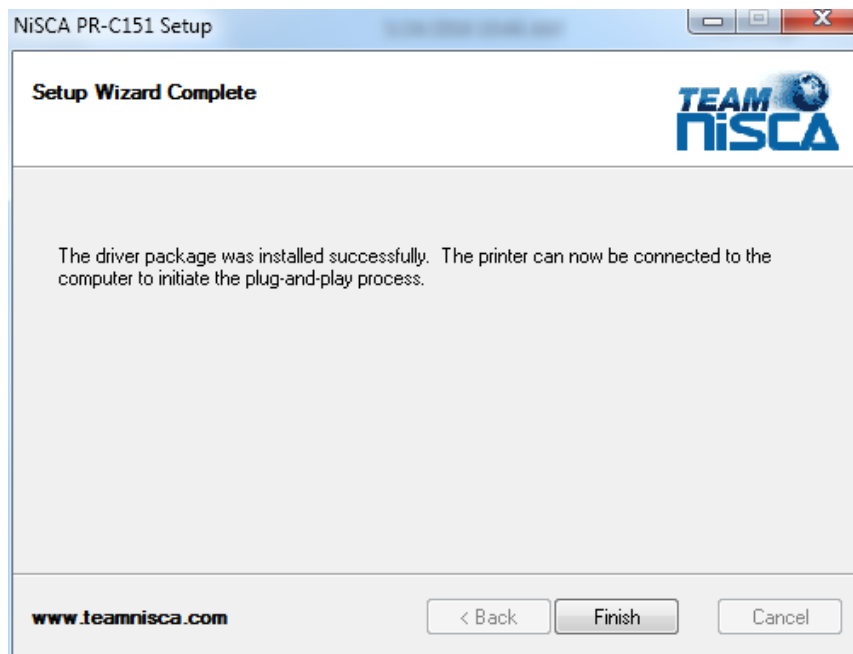
4. Click next on the "Verify Installation Operations" window so the driver can start copying the files to your PC.



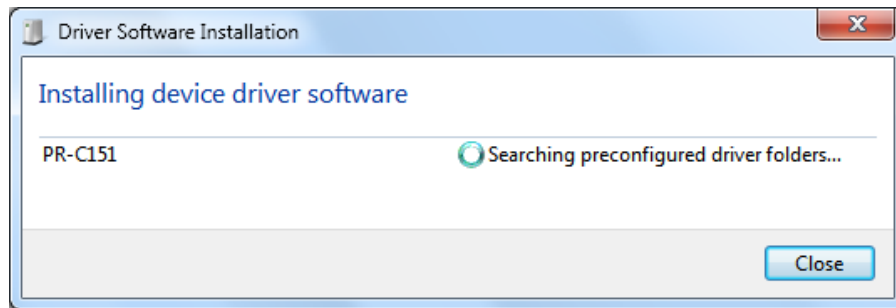
5. A Windows Security window may pop up if you have never installed a NiSCA printer on your PC before, click install to proceed.



6. Once the setup wizard is complete, click finish and plug your printer into an available USB port on your PC.

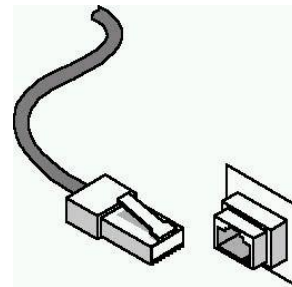


7. The printer is a plug & play device. The PC will automatically detect it and install it with its ID.

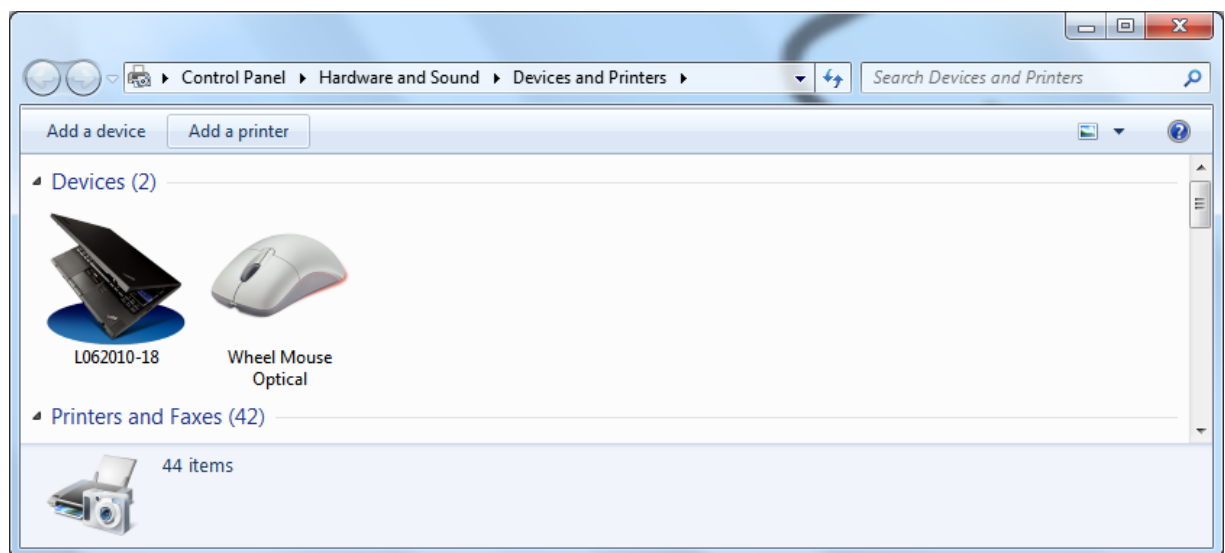


1.2 Network Installation

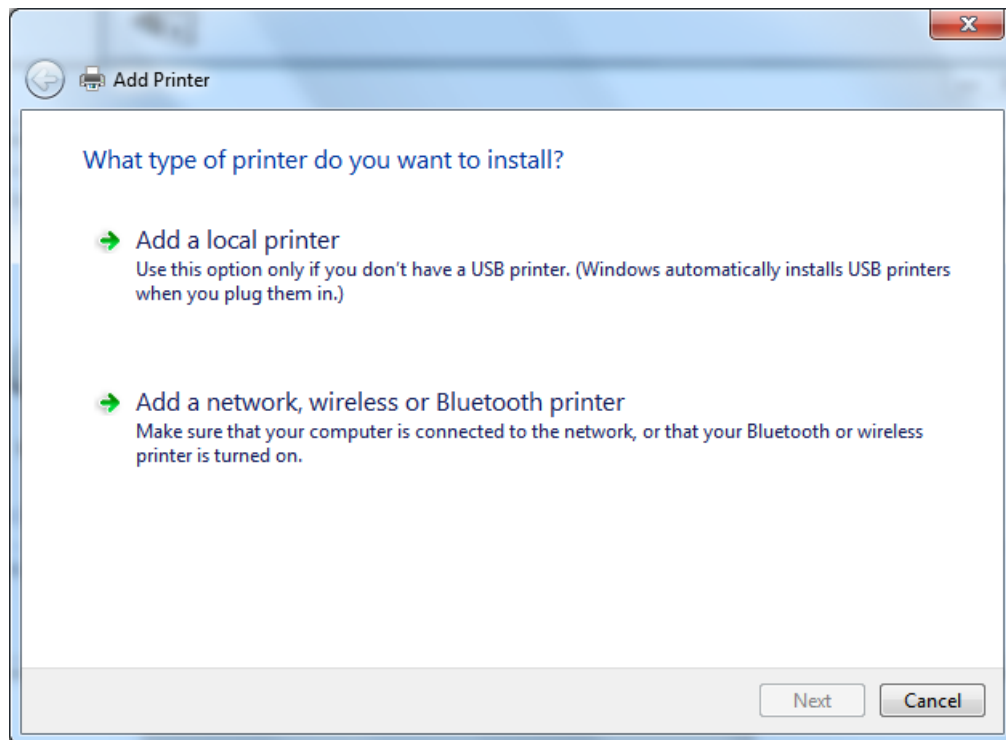
Connect the printer to your network.



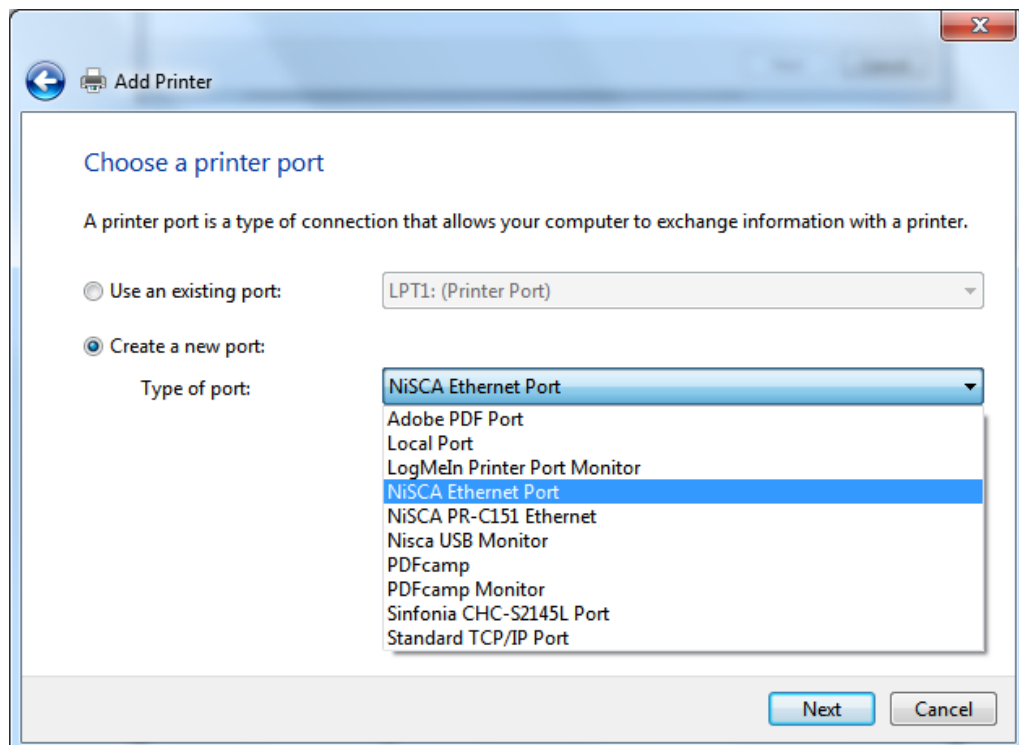
1. Run the standard Windows Add Printer Wizard from the Start menu and Add a printer.



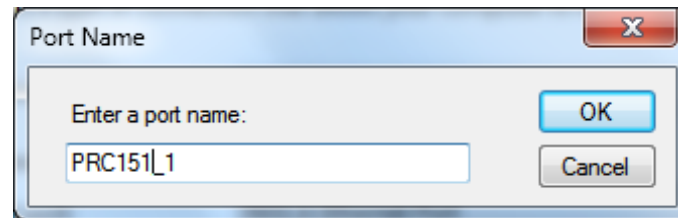
1. Add a local printer.



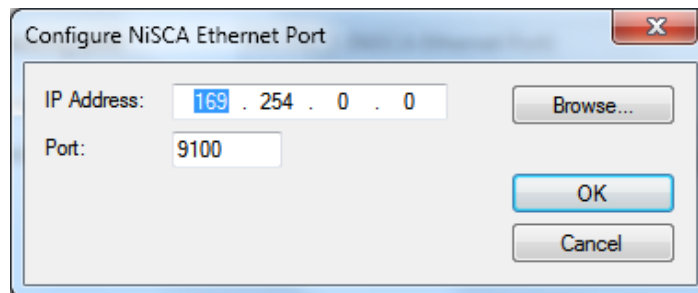
2. A new printer port needs to be created to connect to the networked NiSCA printer. Select "NiSCA Ethernet Port" for the type of port.



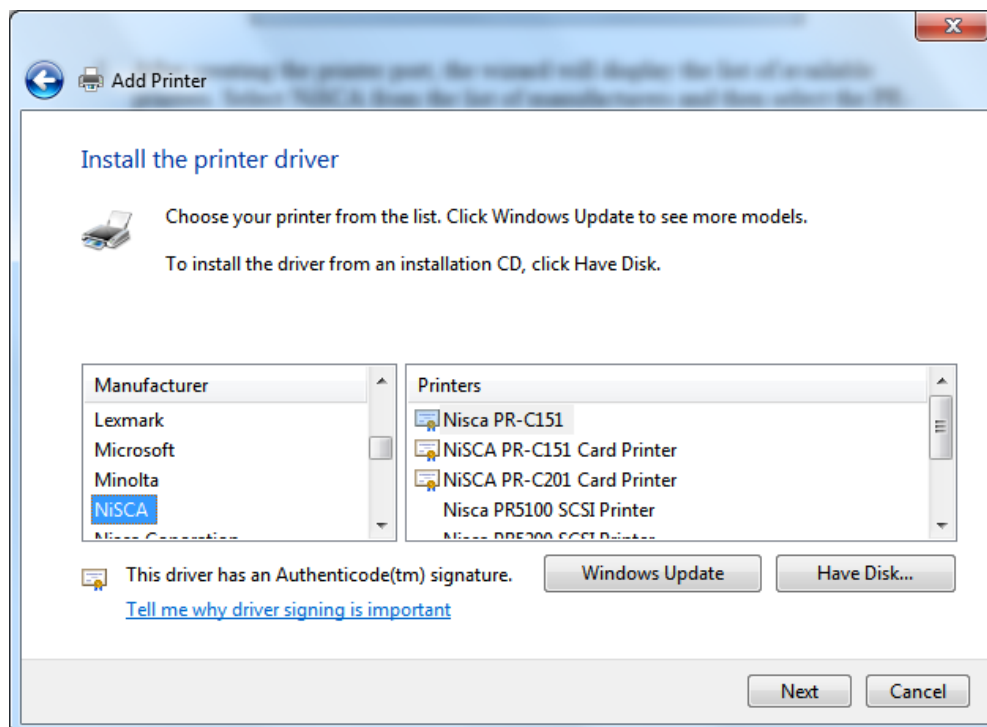
3. The NiSCA driver will suggest a unique name for the port. The default can be changed to a more descriptive name if desired.



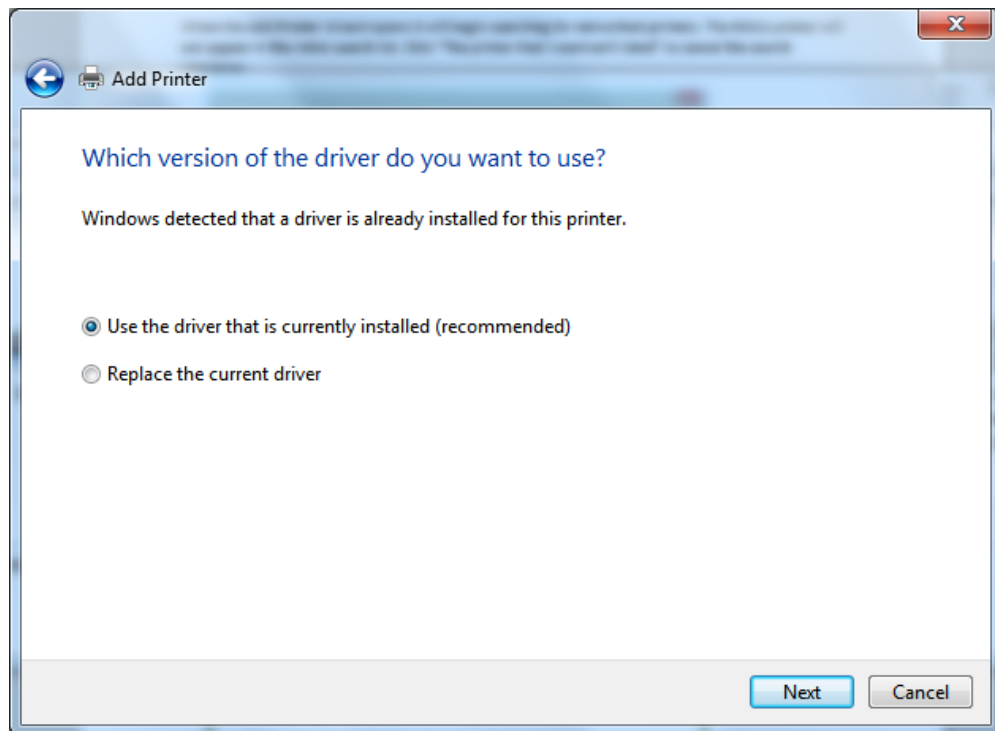
The printer's IP Address can be obtained through the printer's menu interface or by searching the network via the browse button. The port should be set to 9100.



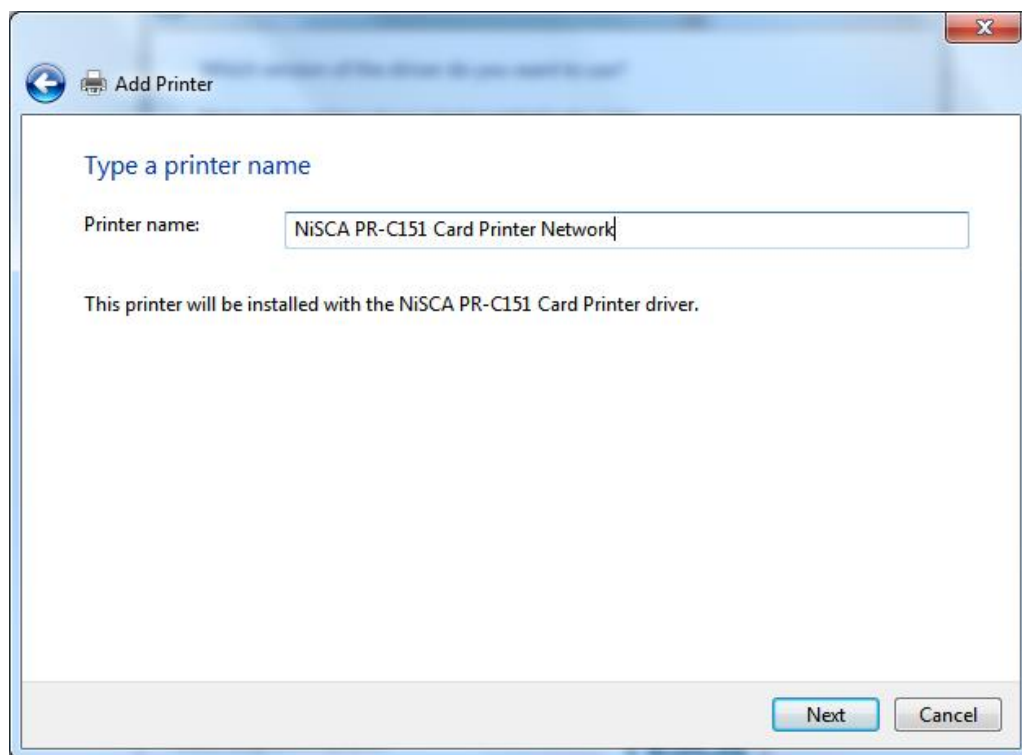
4. After creating the printer port, the wizard will display the list of available printers. Select NiSCA from the list of manufacturers and then select the PR-C151/201 depending which unit you are installing.



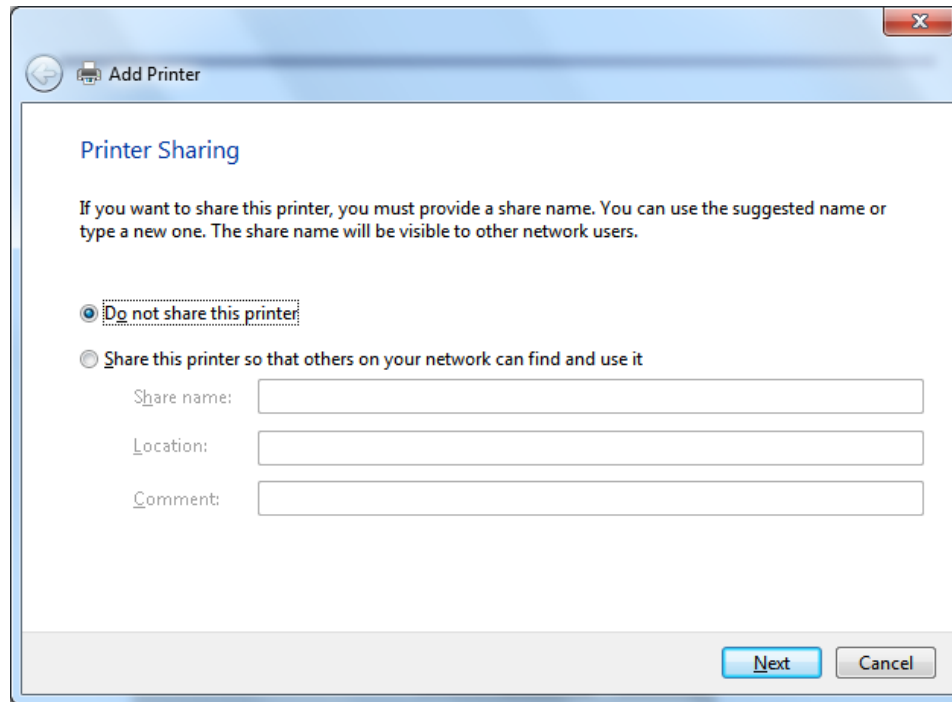
- Next keep the selection to use the driver that is currently installed.



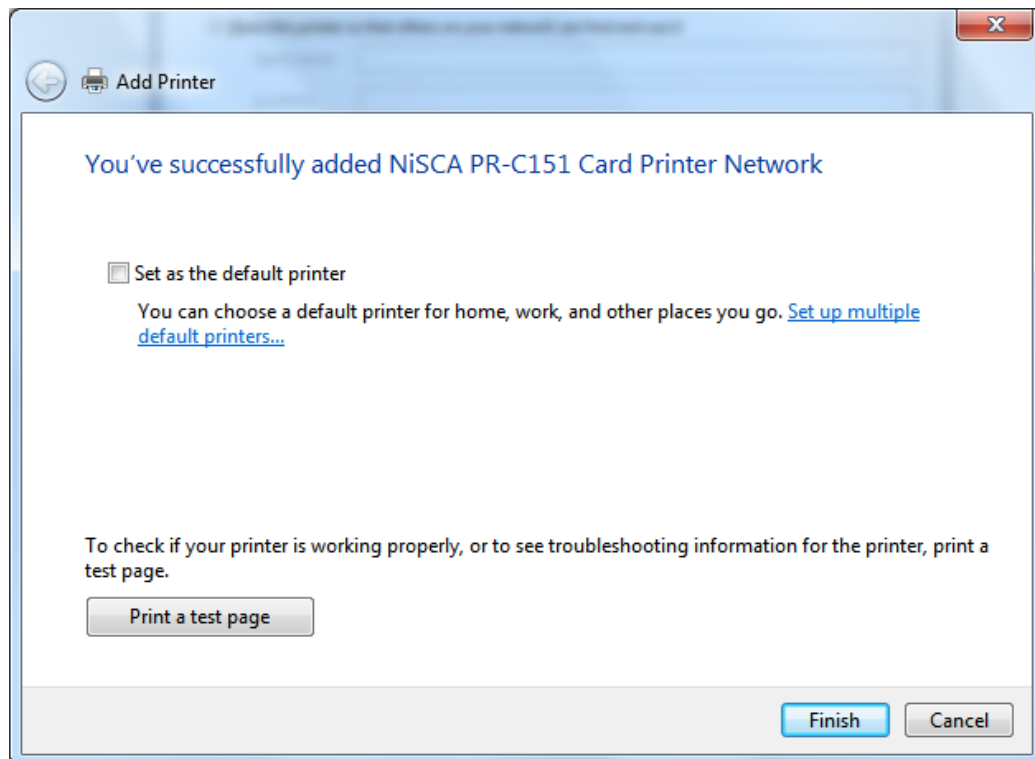
- The wizard will select a default printer name, it can be changed if desired.



7. Printer sharing is probably not necessary since the printer is using a network connection.



8. Finally, the wizard will display the completion dialog. Check "Set as the default printer" if the new NiSCA connection should be the default printer.



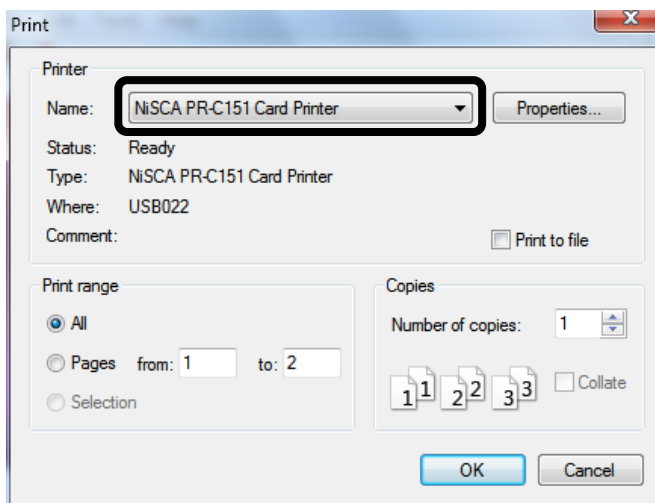
1.3 Printing a Test Card

A sample application is included with the installation of the printer driver. To print a sample card, refer to the following steps:

1. Turn on the power to the printer. Be sure the green LED on the LCD panel is lit and the LCD display shows normal mode.
2. Confirm that all supplies are loaded.
3. Click Start → All Programs → NiSCA PR-C151/C201 Card Printer → NiSCA ID.
4. The sample application will load.



5. Select File → Print.



6. Select the Nisca printer you would like to use to print the sample.
7. Click **OK** to print the sample card.

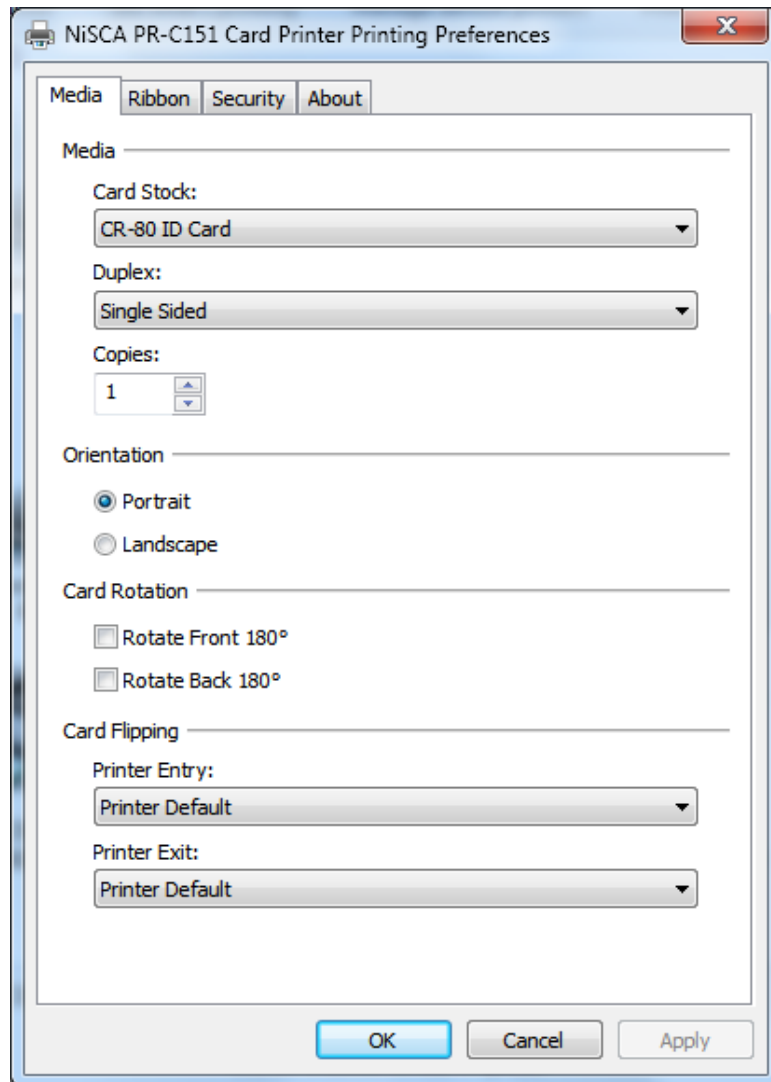
SECTION

2.

Using the Printer

2 Configuring Printer Preferences for the PR-C151

The PR-C151 printer can be used with any Windows® software application. Settings that control the printing and personalization of the card are found under Printing Preferences. These settings include:



To open the printer driver Printing Preferences, please refer to the following steps:

1. Click on the Start button, point to Settings, and select Printers.
2. Click on the NiSCA PR-C151 card printer with the right mouse button, and select “Printing Preferences...”.
3. Change the settings desired for your application.

2.1 Printer Media Tab

Card Stock (Card Size)

- ❖ Select the card size currently loaded in the printer.

Duplex

- ❖ Select this option to enable printing on the front and back side of the card.

Copies

- ❖ Specifies the number of copies to be printed.

Orientation

- ❖ Select either Portrait or Landscape. Selecting Portrait causes the card to print in the vertical orientation. Selecting Landscape causes the card to print in a horizontal orientation. An icon illustrating a printed card helps represent the difference between the two.

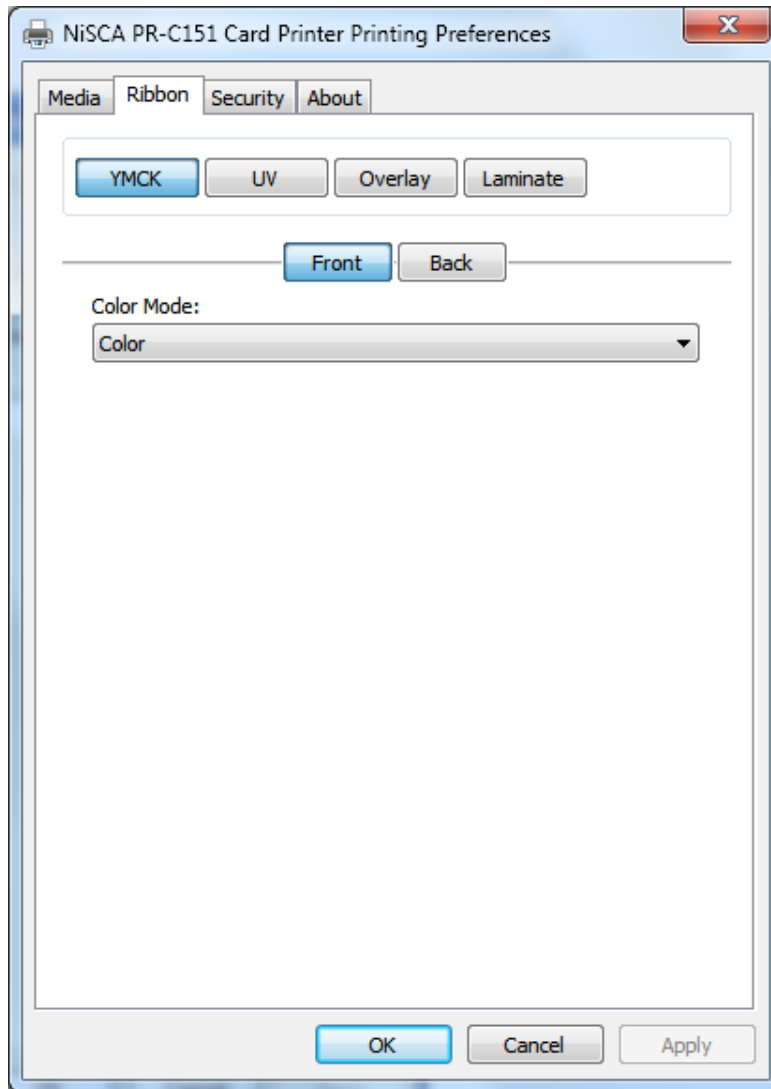
Card Rotate

- ❖ This option allows the image to be rotated 180° on the front and back of the card before printing. This option is often used to change the position of the printed image in relation to the set location of a card’s magnetic stripe.

Card Flipping

- ❖ Printer Entry: If an external module is inserted at the beginning of the print chain, the driver can force a particular side up on entry.
- ❖ Printer Exit: If an external unit is attached to the end of the print chain, the driver can force a particular side up on exit.

2.2 Ribbon Tab



YMCK

- ❖ Specifies the color mode and ribbon panels used for printing. Available options include Black using Resin Black, Grayscale using YMC, Color using YMC, or Color with Selective Resin Black using YMCK. For further control, select the desired color mode and click Settings.

Ultraviolet (UV)

- ❖ Color Mask: If the ribbon contains an ultraviolet dye-sub panel, you may specify how the printer driver applies the mask to the front and back side of the card. The color mask option instructs the driver to look for the specified mask color and apply as the UV ribbon panel. If the mask color is magenta, the driver will pull all magenta from the card and pass it to the UV panel.

-
- ❖ Monochrome Bitmap Graphic: This option applies a centered or tiled overlay using a monochrome bitmap graphic. For file selection and placement of the image, click on settings.

Overlay

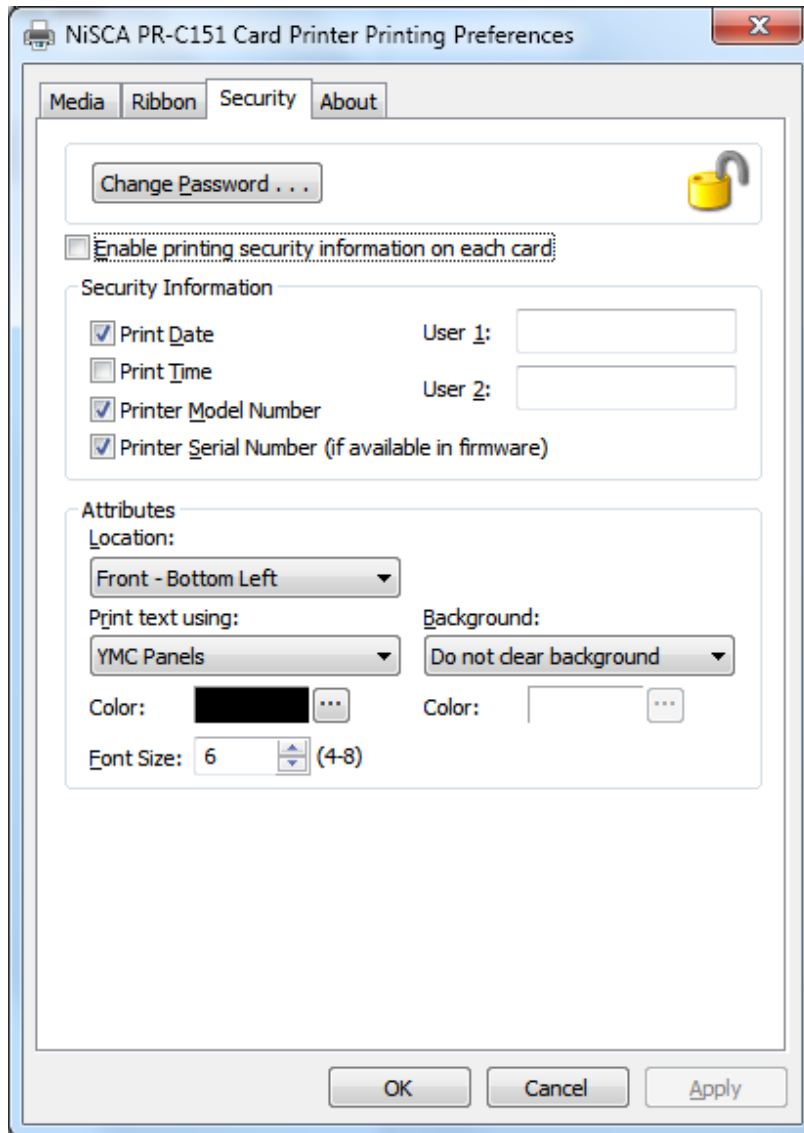
- ❖ Clear Overlay (Varnish): Thin clear overlay panel represented by the O on a ribbon, for example, YMCKO.
 - Options are as follows:
 - Apply overlay to color areas
 - The O panel is only applied to areas where the YMC has been printed.
 - Apply overlay to color and resin areas
 - The O panel is only applied to areas where the YMCK has been printed.
 - Apply overlay to entire card
 - Apply overlay to custom areas
 - User can define their own area to apply the overlay.

Laminate

- ❖ Thermal Overlaminate: A thicker protective layer applied by the attached Heat Roller Unit. The optional Heat Roller Unit can apply a thin film (Softcoat) roll that can contain holographic images for providing a level of card durability and security or a patch (Hardcoat) roll that covers about 95% of the card with a 1mil thick patch.

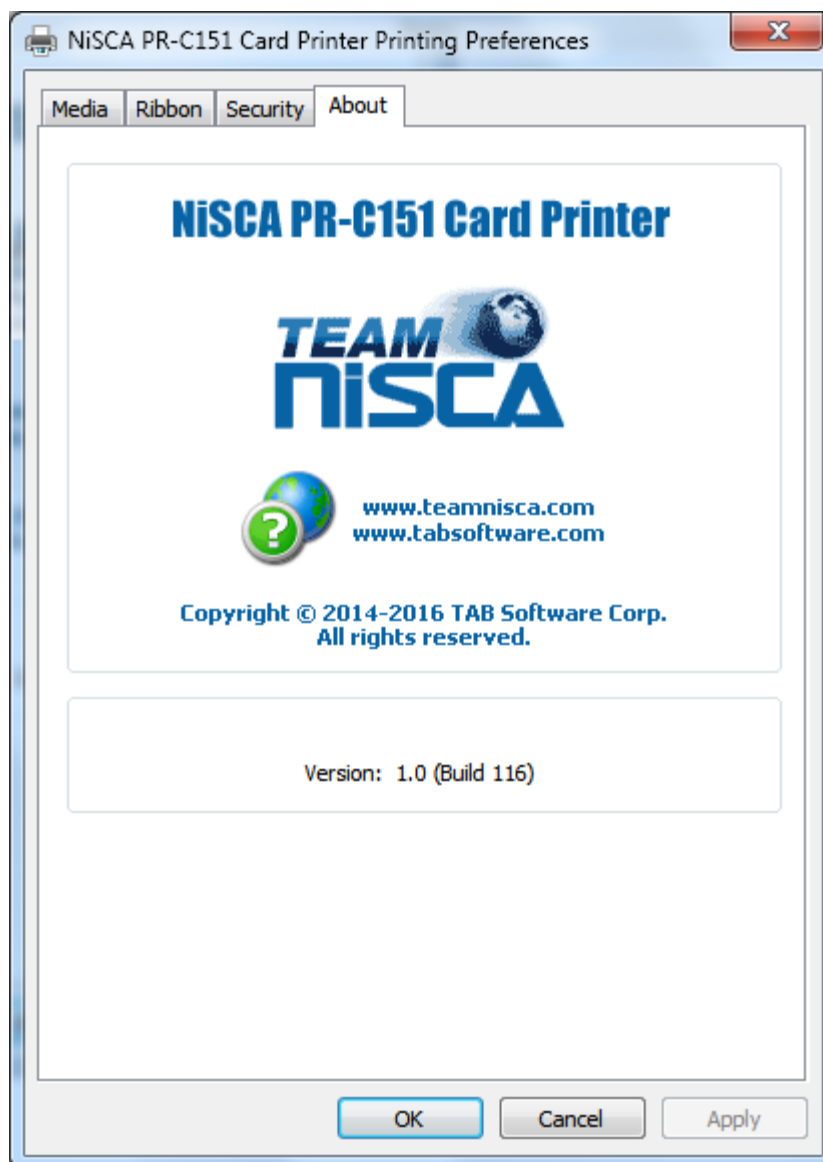
2.3 Security Tab

- ❖ To enable printing security information on each card, select this option. You may enter any information desired in the User 1 and User 2 fields. You may also change font attributes and print location using the options in the Attributes group.



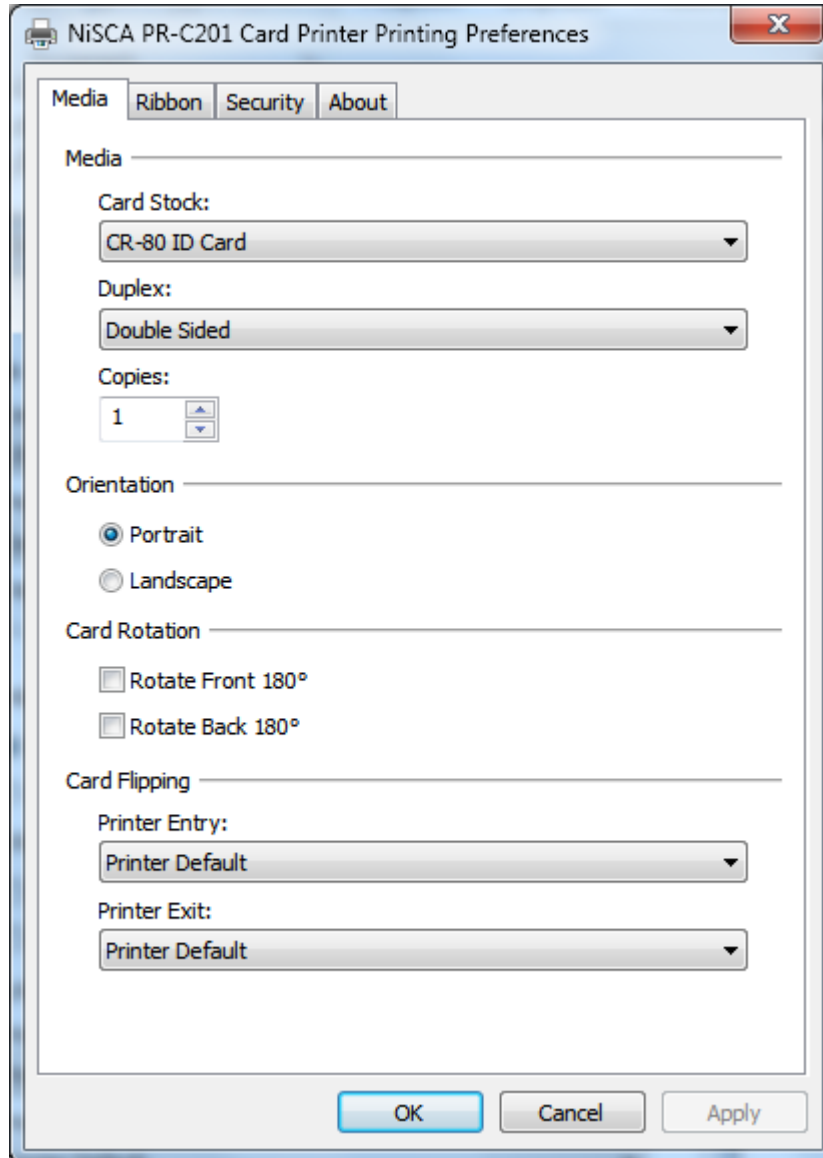
2.4 About Tab

- ❖ The about tab displays copyright and version information about this printer driver.



2.5 Configuring Printer Preferences for the PR-C201

The PR-C151 printer can be used with any Windows® software application. Settings that control the printing and personalization of the card are found under Printing Preferences. These settings include:



To open the printer driver Printing Preferences, please refer to the following steps:

4. Click on the Start button, point to Settings, and select Printers.

-
5. Click on the NiSCA PR-C201 card printer with the right mouse button, and select “Printing Preferences...”.
 6. Change the settings desired for your application.

2.6 Printer Media Tab

Card Stock (Card Size)

- ❖ Select the card size currently loaded in the printer.

Duplex

- ❖ Select this option to enable printing on the front and back side of the card.

Copies

- ❖ Specifies the number of copies to be printed.

Orientation

- ❖ Select either Portrait or Landscape. Selecting Portrait causes the card to print in the vertical orientation. Selecting Landscape causes the card to print in a horizontal orientation. An icon illustrating a printed card helps represent the difference between the two.

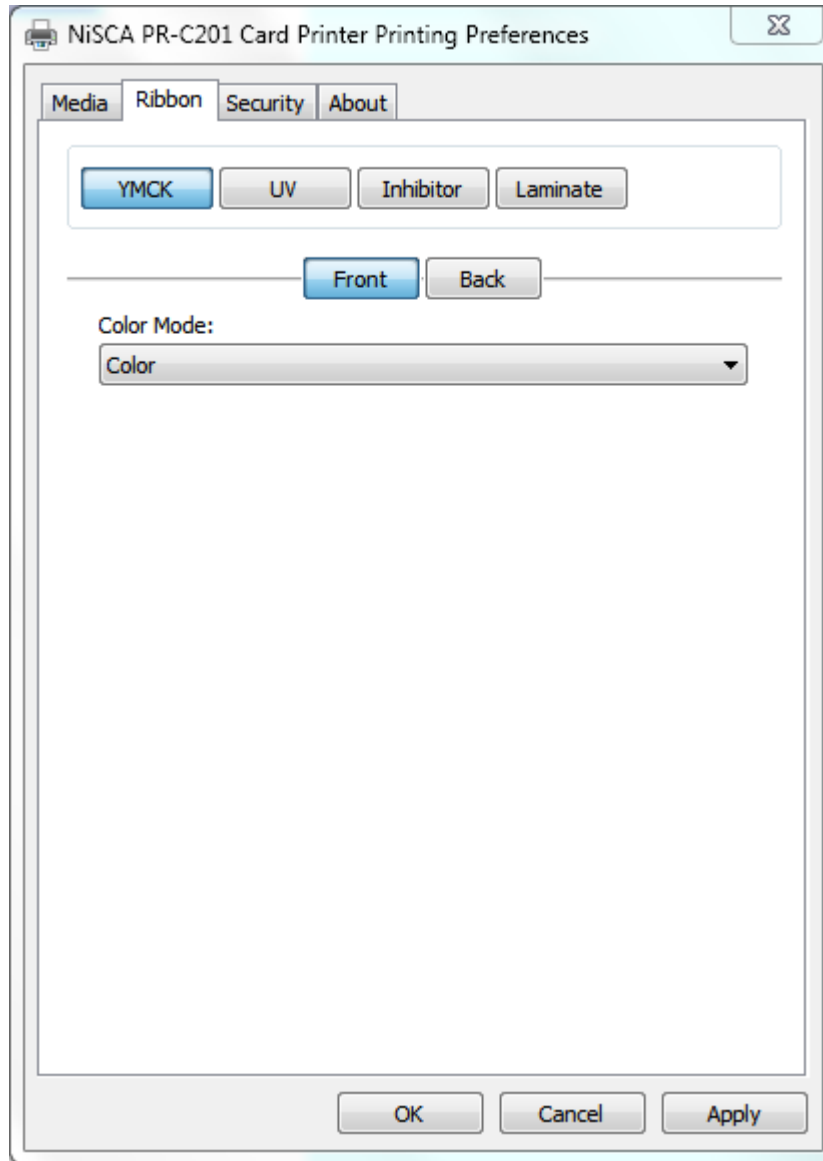
Card Rotate

- ❖ This option allows the image to be rotated 180° on the front and back of the card before printing. This option is often used to change the position of the printed image in relation to the set location of a card’s magnetic stripe.

Card Flipping

- ❖ Printer Entry: If an external module is inserted at the beginning of the print chain, the driver can force a particular side up on entry.
- ❖ Printer Exit: If an external unit is attached to the end of the print chain, the driver can force a particular side up on exit.

2.7 Ribbon Tab



YMCK

- ❖ Specifies the color mode and ribbon panels used for printing. Available options include Monochrome Using Resin Black, Grayscale Using YMC, or Color with Selective Resin Black. For further control, select the desired color mode and click Settings.

Ultraviolet (UV)

- ❖ Color Mask: If the ribbon contains an ultraviolet resin panel, you may specify how the printer driver applies the mask to the front and back side of the card. The color mask option instructs the driver to look for the specified mask color and apply as the UV ribbon panel. If the mask color is magenta, the driver will pull all magenta from the card and pass it to the UV panel.

-
- ❖ **Monochrome Bitmap Graphic:** This option applies a centered or tiled overlay using a monochrome bitmap graphic. For file selection and placement of the image, click on settings.

Inhibitor

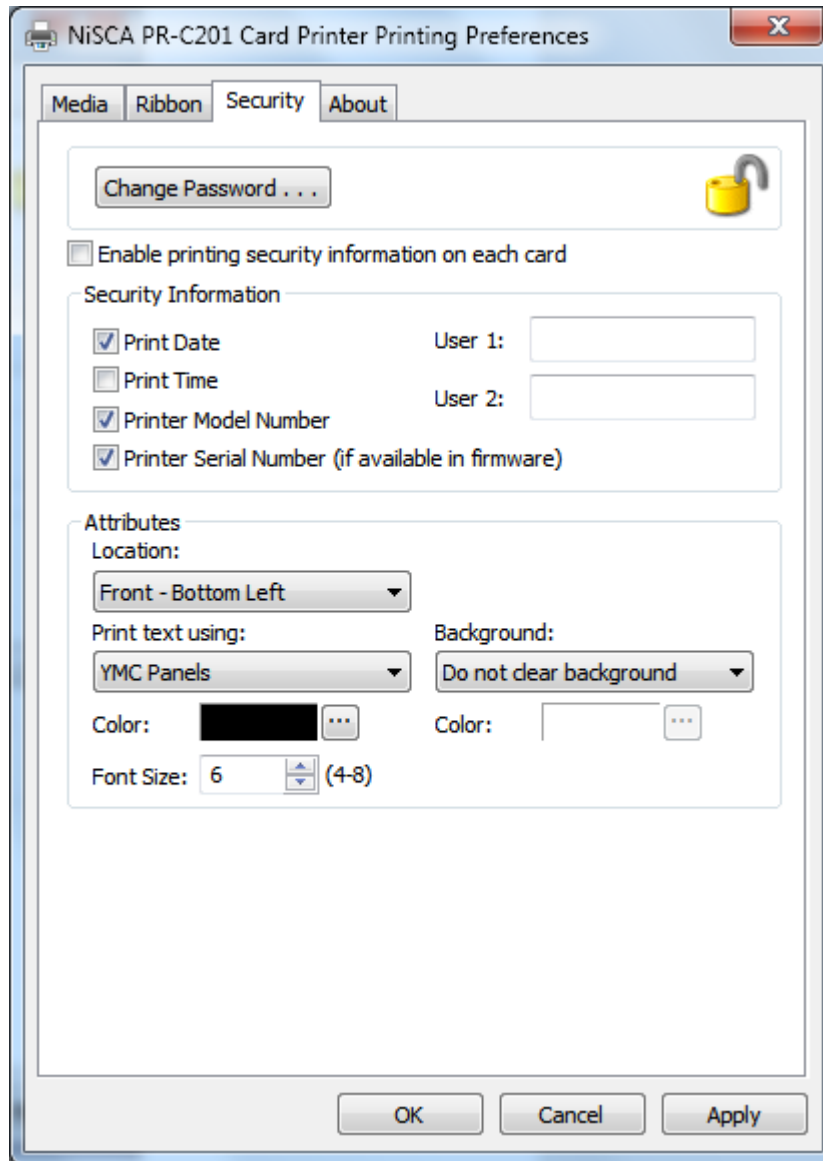
- ❖ The I panel is applied to the film after the YMCK panels to custom areas defined that will not be transferred to the card. (i.e. signature panel or magnetic stripe)

Laminate

- ❖ **Thermal Overlaminate:** A thicker protective layer applied by the attached Heat Roller Unit. The optional Heat Roller Unit can apply a thin film (Softcoat) roll that can contain holographic images for providing a level of card durability and security or a patch (Hardcoat) roll that covers about 95% of the card with a 1mil thick patch.

2.8 Security Tab

- ❖ To enable printing security information on each card, select this option. You may enter any information desired in the User 1 and User 2 fields. You may also change font attributes and print location using the options in the Attributes group.



2.9 About Tab



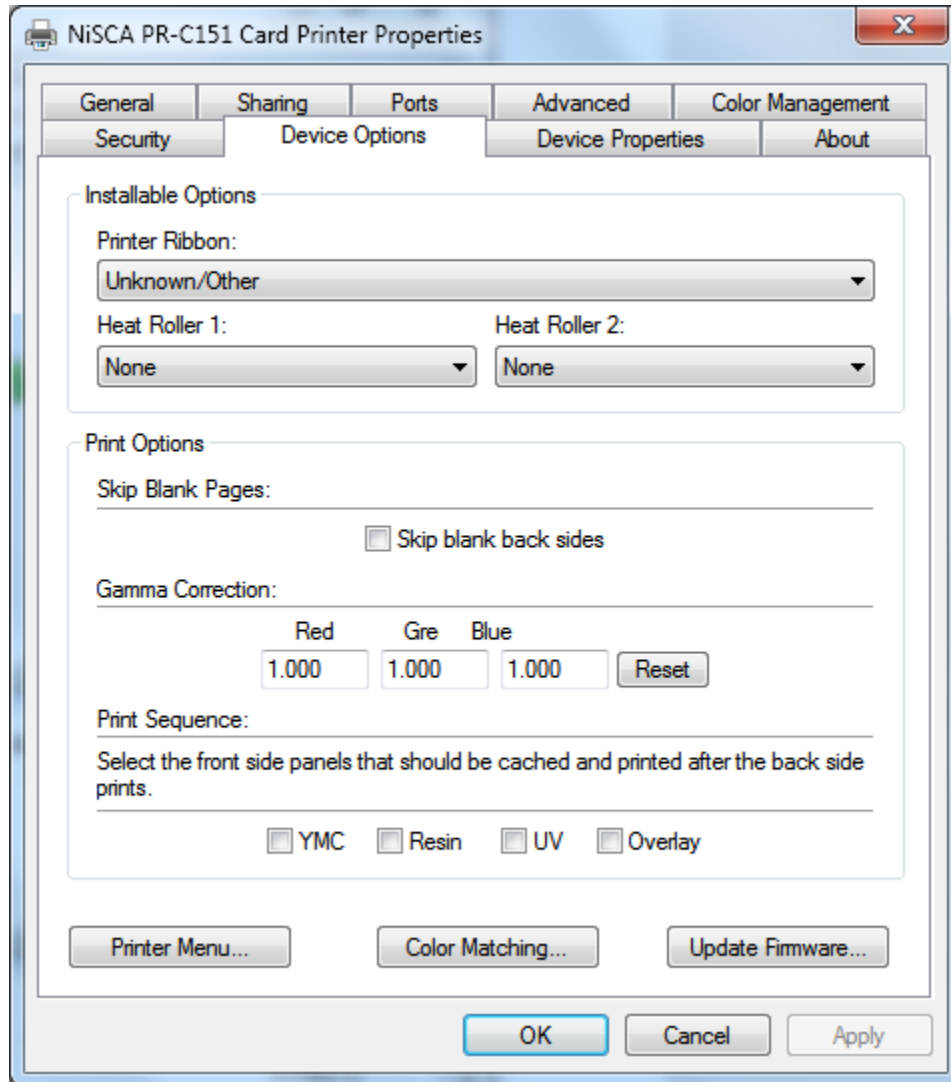
S E C T I O N

3.


Configuring Printer Properties

3 Printer Properties

Found in the printer properties are special functions for firmware upgrading, color matching, and printer settings. These functions can be found under the following tabs:



3.1 Device Options Tab

 **Note** All settings made in the Device Settings will override all options in the Printing Preferences tab. This option should only be used to avoid printing multiple sets of ribbon panels while printing a card.

Printer Ribbon

- ❖ Select the type of ribbon being used (YMCKO, YMCKOK, YMC.... etc.).

Heat Roller 1

- ❖ Select the type of laminate being applied to the card

Heat Roller 2

- ❖ Select the type on laminate being applied to the card in dual lamination environment.

Print Options

- ❖ Gamma Correction: for controlling the overall brightness of an image.
- ❖ Print Sequence: for caching ribbon panels.

Example, if you want to print color and resin on the front and resin with the clear (Varnish) on the back of a card using an YMCKOK ribbon, this cannot be done without using 2 sets of ribbon panels. Under normal circumstances, the printer will print the YMCK on the front and then flip the card. Next, the printer will print the second resin on the back of the card. Being that the ribbon we are using is a YMCKOK, the O (Clear/Varnish) panel has passed and the printer will rewind to print the O. In order to complete the print, the printer will wind the ribbon to the next O panel and then print. In this mode of printing, the printer has printed one card using 2 sets of ribbon panels. With this feature, you can cache the resin panel so that the first resin panel prints on the back of the card and the second prints on the front. This will allow you to apply the clear from the first set of panels and not the second.

Printer Menu Button

- ❖ This button allows you gain access and make changes to the User & Service mode of the printer. More information about these modes in the PR-C151/PR-C201 Service Manual.

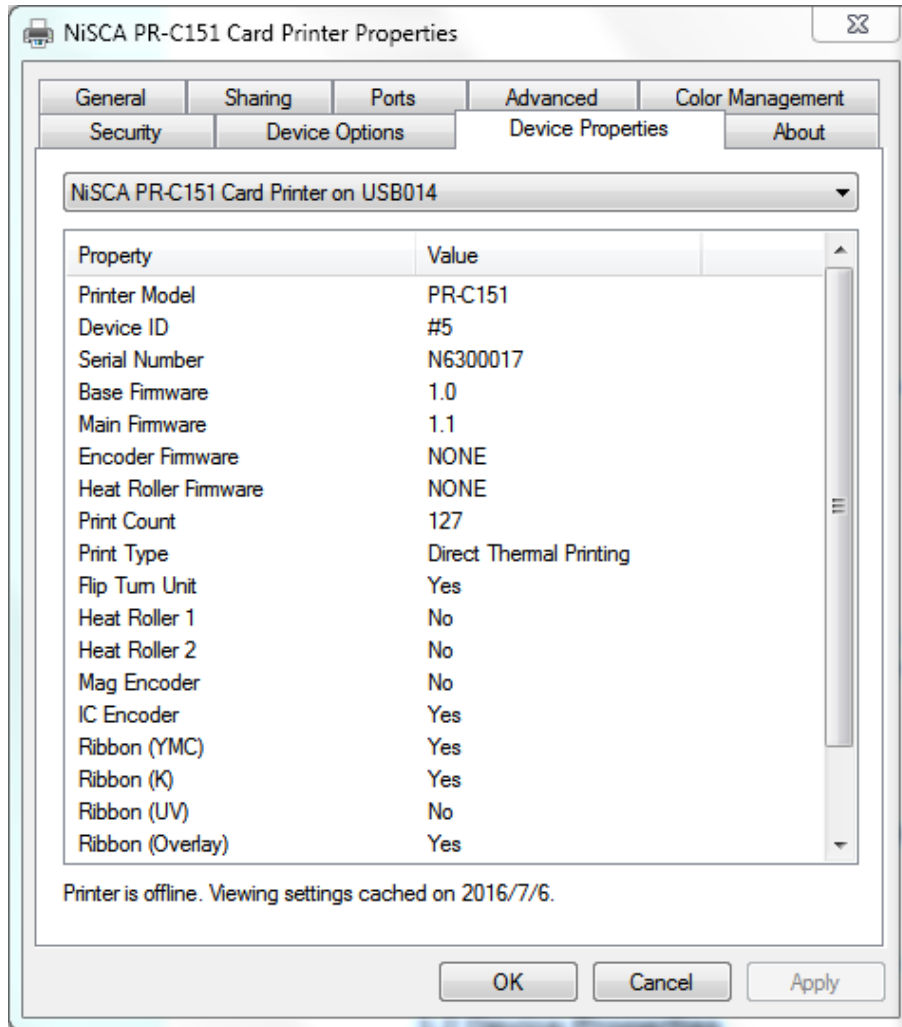
Color Matching*

- ❖ For matching the PR5350 color output. *Only available in the PR-C151 driver.

Update Firmware

- ❖ For updating the printer's firmware.

3.2 Device Properties



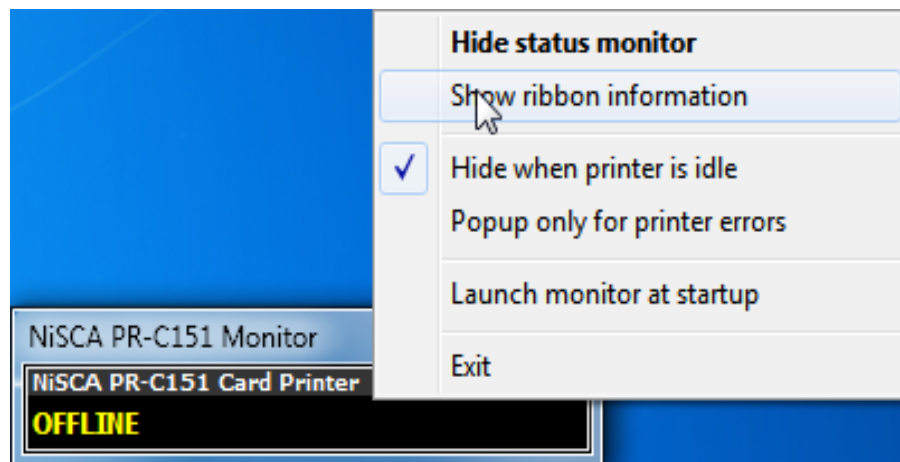
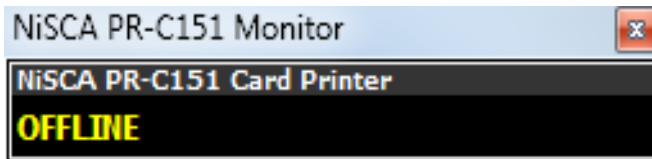
Displays the current status and configuration of the printer

S E C T I O N

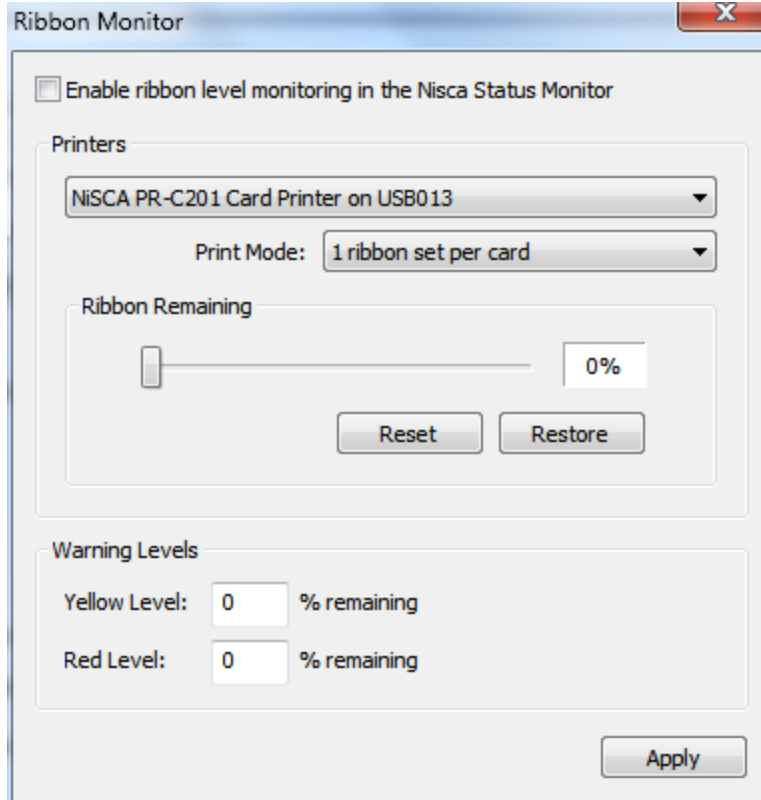
4.

4 Status Monitor

Displays the current status of the printer. Generally, found on the bottom right of the monitor when the printer is active.



Right clicking on the status monitor allows for other options.



Status Monitor

- ❖ The ribbon level monitor allows you to manually track the ribbon usage and warning levels. This tells the user about how many prints are left on the ribbon and displays it in the status monitor on your desktop.