

Icon specifications

Voltage	90 - 264 VAC
Frequency	50-60 Hz
Max. power	1600 VA
Speed	Up to 3 Hz (pulse rate)
Weight	104 lb. (47.1kg)

Handpiece compatibility

Handpiece Technologies	Hair removal	Pigmented lesions	Vascular lesions	Leg veins	Wrinkles	Surgical scars	Stretch marks	Skin resurfacing	Soft tissue coagulation
MaxR (all skin types)	●								
MaxRs (all skin types)	●								
MaxYs (skin types IV)	●	●							
MaxG		●	●						
1540 fractional laser					●	●	●	●	●
2940 fractional laser					●			●	●
1064+ YAG laser	●			●					

Contact Cynosure today for more information about the Icon and maximise your business potential in the aesthetic laser market.

Cynosure Pty Ltd, Ground Floor, 14-16 Suakin St, Pymble, NSW 2073
 P +61 2 9484 4546 **1300 CYNOSURE E** infoaustralia@cynosure.com

© 2015 Cynosure and the Cynosure logo are registered trademarks of Cynosure, Inc. Palomar, Ellman, Icon and Skintel are registered trademarks and MaxG, MaxYs, MaxR and MaxRs are trademarks of Cynosure, Inc. ALL RIGHTS RESERVED



Icon™
Aesthetic System

the next generation
laser light platform

CYNOSURE®

Palomar
ConBio
ellman

CYNOSURE Palomar

Icon™

What makes Icon unique for your practice

Introducing the Icon™ laser light system, the next generation in laser light aesthetic systems with innovative and sophisticated functionality.

The Icon allows you to offer unique FDA approved revenue generating treatment opportunities.

Software & firmware

enables advanced functionality operation and error tracking through intelligent, internal diagnostics

Intuitive user interface

provides a large, easy-to-use touch-screen control of pulsewidth, fluence, repetition rate and adjustable patient contact cooling

Integrated patient database

with in-built, individualised patient data storage and tracking of previous treatment session parameters

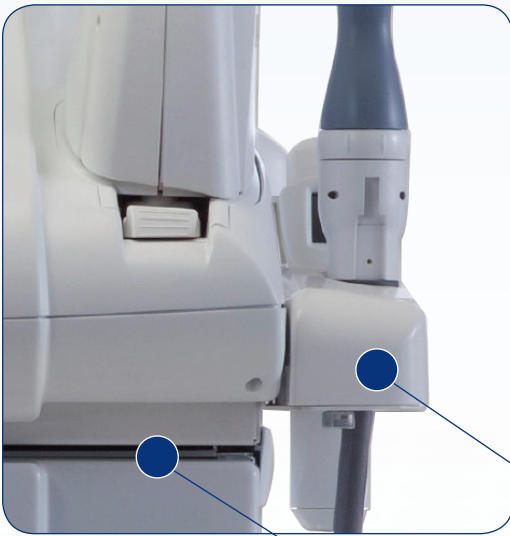
Dynamic cooling

offers optimal performance and refinement combined with significant noise reduction through compressor noise reduction technology



Key design

incorporates a progressive, contemporary, bold and unmistakably aesthetic exterior, giving the Icon a refined, modern medical presence



Skintel Intelligence

is the first integrated advanced melanin reader technology, with Bluetooth connectivity. Measuring a patient's melanin index allows for increased operator confidence in treatments



On-demand calibration

includes optical feedback circuitry that monitors and ensures accurate ongoing and consistent power outputs during treatments

Optimised power

improves efficiencies in delivery and increased electrical capacity with monitoring sensors and components for advanced safety and performance

Tri-mode versatility

in stand-alone laser or multiplatform technology is fully scalable to meet present and future requirements

Flexible portability

of modular configurations enables ease of maneuverability and assembly both onsite or offsite as required

Power, precision and confidence in one system



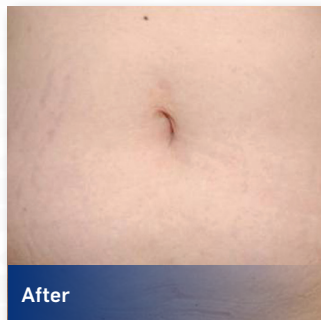
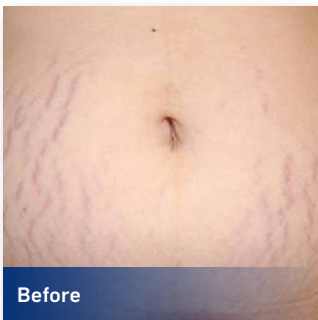
Facial vessels

The Icon features enhanced ability to close larger, deeper facial vessels, including telangiectasia, rosacea, angiomas, haemangiomas, reticular veins and port wine stains, without compromising patient comfort and safety. The Icon offers results that can go beyond single-wavelength lasers, incorporating the ability to use very short or long pulsewidths.



Skin rejuvenation and pigmentation

Obtain superior results on pigmented lesions including sun damage, sun spots, liver spots and melasma, with minimal patient downtime. The Icon incorporates dual filter technology that delivers optimally filtered wavelengths.



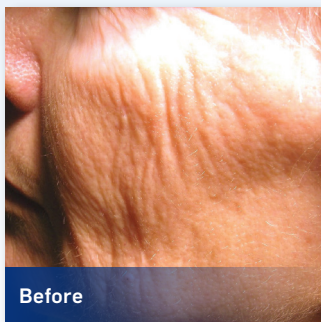
Stretch marks

Icon is the first and only FDA approved non-ablative laser to treat stretch marks with no downtime for the patient. This system improves the unsightly colour and skin texture associated with stretch marks, leaving patients with smoother looking skin.



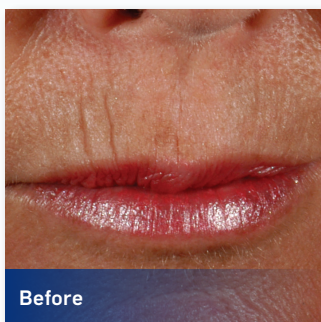
Laser scar removal

The Icon delivers rapid, reliable removal of acne scarring and surgical scars on all skin types with little to no pain, no anaesthesia, no consumable cost, and no dye required. Healing time is minimal.



Skin resurfacing

The Icon system offers stand-alone or combination skin resurfacing with either fractional ablative or fractional non-ablative laser. The combination treatment approach offers a same-day treatment which allows the tailoring of depth, coagulation and ablation to an individual's needs - helping to maximise treatment outcomes while minimising downtime.



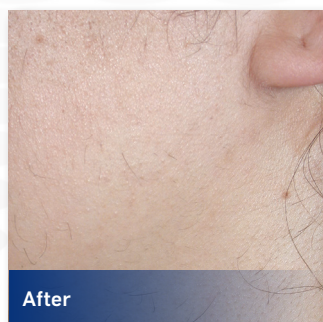
Wrinkle treatment

Treat deeper wrinkles with a higher level of comfort compared to fractional CO₂ or full surface CO₂ laser resurfacing, with the ability to customise desired ablation and thermal effect. Icon treatments require minimal recovery time with dramatic, long-lasting results in just one treatment.



Leg veins

Non-invasive treatment with 1064nm wavelength laser treats spider and reticular veins in less than 30 minutes, with no incision, minimal discomfort and no downtime.



Hair removal

Permanently reduce unwanted facial and body hair in fewer treatments with fast, comfortable and accurate treatments for all skin types, using either IPL or laser.

Handpiece technologies



MaxG

Wavelength: 500-670 nm
and 870-1200 nm
Pulse width: 1-100 ms
Spot size: 10 x 15 mm
Energy: Up to 80 J/cm²



MaxR

Wavelength: 650-1200 nm
Pulse width: 1-100 ms
Spot size: 16 x 46 mm
Energy: Up to 46 J/cm²



MaxRs

Wavelength: 650-1200 nm
Pulse width: 1-100 ms
Spot size: 12 x 28 mm
Energy: Up to 70 J/cm²



MaxYs

Wavelength: 525-1200 nm
Pulse width: 1-100 ms
Spot size: 12 x 28 mm
Energy: Up to 81 J/cm²



2940 fractional ablative laser

Wavelength: 2940 nm
Treatment zone-fractional:
10 x 10, 6 x 6 mm
Flatbeam: 6 x 6 mm
Microbeam density: Up to 1000 cm²
Pulse width: 0.25-5 ms
Max. repetition rate: Up to 6 Hz



1064+YAG laser

Wavelength: 1064 nm
Pulse width: Up to 100 ms
Spot size: 1.5, 3, 6 and 10 mm
Max. energy: Up to 700 J/cm²



1540 fractional laser

Wavelength: 1540 nm
Pulse width: 10-15 ms
Spot size: 10 and 15 mm
Energy: Up to 70 J/cm²



XD microlens

Spot size: 12 x 12 mm
Microbeams: 49
Pitch: 2mm
Microbeam energy:
Up to 70 J/cm²
Density: 25 mB/cm²
Average column depth of
coagulation: 1050 microns
Average column width of
coagulation: 300 microns



XF microlens

Spot size: 10 x 10 mm
Microbeams: 175
Pitch: 1mm
Microbeam energy:
Up to 50 J/cm²
Density: 115 mB/cm²
Average column depth of
coagulation: 700 microns
Average column width of
coagulation: 260 microns

