

STORZ

THE WORLD OF ENDOSCOPY



EXTRACT FROM THE PEDIATRIC SURGERY CATALOG

LAPAROSCOPY

3rd EDITION 2/2019

Not all the products listed in this document are certified according to Regulation 2017/745/EU.

For this reason, some products requiring certification under this Regulation may not be available in every country.

It is recommended to check the suitability of the product for the intended procedure prior to use.
Please note that the described products in this medium may not be available yet in all countries due to different regulatory requirements.

© All product illustrations, product descriptions and texts are the intellectual property of KARL STORZ SE & Co. KG.
Their use and reproduction by third parties require the express approval of KARL STORZ SE & Co. KG. All rights reserved.

Table of Contents

PEDIATRIC SURGERY – LAPAROSCOPY

LAPAROSCOPY	
HOPKINS® Telescopes – for pediatric laparoscopy	2
HOPKINS® Telescopes	3
TERNAMIAN ENDOTIP System	4-5
TERNAMIAN ENDOTIP Cannulas – Size 3.9 mm	6
Trocars for Laparoscopy	7
Trocars – Size 2.5 mm	8, 13
Trocars – Size 3.5 mm	9
Trocars – Size 6 mm	10, 15
TAN ROTALOCK® Trocar – Sizes 3.5 and 6 mm	11-12
Trocars – Size 3.9 mm	14
Accessories – Reduction Sleeve, Thread Sleeve and Distance Holder	16
KARL STORZ CLICK'line ® – rotating, dismantling, laparoscopic instruments	17
User Information – for easy location of the correct catalog number for the required CLICK'line ® instrument	18
Plastic Handles – for Dissecting and Grasping Forceps, insulated, CLICK'line ® – rotating, with connector pin for unipolar coagulation	19-20
Plastic Handles – for Dissecting and Grasping Forceps, insulated, CLICK'line ® – with connector pin for unipolar coagulation	21
Metal Handles – for Dissecting and Grasping Forceps, CLICK'line ® – rotating, without connector pin for unipolar coagulation	22-23
Metal Outer Sheaths – for Dissecting and Grasping Forceps, CLICK'line ®	24
Accessories for Handles and Outer Sheaths	25
Dissecting and Grasping Forceps – CLICK'line ® – rotating, dismantling, with or without connector pin for unipolar coagulation	26
Dissecting and Grasping Forceps – CLICK'line ® – rotating, dismantling, insulated, with connector pin for unipolar coagulation	27, 29, 31
Dissecting and Grasping Forceps – CLICK'line ® – rotating, dismantling, without connector pin for unipolar coagulation	28, 30, 32
Scissors – CLICK'line ® – rotating, dismantling, insulated with connector pin for unipolar coagulation	33
Scissors, Punches and Forceps for Biopsy – CLICK'line ® – rotating, dismantling, insulated, with connector pin for unipolar coagulation	34
Knives for Pyloromyotomy	35
Percutaneous Pyloric Spreader, GEIGER Pyloric Grasper	36
Coagulation and Dissection Electrodes – without suction channel, insulated sheath, with connector pin for unipolar coagulation	37
Dissection Electrodes – without suction channel, insulated sheath, with connector pin for unipolar coagulation	38
Handles and Outer Sheaths for Bipolar Forceps – TAKE-APART® – with connector pin for bipolar coagulation	39
Bipolar Forceps – TAKE-APART® – with connector pin for bipolar coagulation	40
ROBI® Bipolar Grasping Forceps and Scissors – rotating, dismantling, with connector pin for bipolar coagulation, CLERMONT-FERRAND model	41-42
Palpation Probes and Retractors	43
Accessories – Unipolar and Bipolar High Frequency Cords	44
Needles, Injection Cannula	45
Needle Holders	46
Knot Tiers	47
Handles for Suction and Irrigation	48-50
Tubing Sets – for use with Handles 37112 A and 37113 A	51
Suction and Irrigation Tubes	52
BASIC SETS	
Units for Laparoscopic Surgery, Pediatric Surgery, Gynecology and Urology – Basic Set	54-55
Infant and Pediatric Surgery – Basic Set	56

Index

PEDIATRIC SURGERY – LAPAROSCOPY

3

31" 4K-Monitor	55
32" 4K/3D Monitor	55
55" 4K/3D Monitor	55

A

AIDA® with SMARTSCREEN®	55
ALAIN-GROUSSEAU Pylorotome	35
AUTOCON® III 400 High-End	55
Automatic Valve	6

B

Bipolar High Frequency Cord	44, 56
Bipolar Spring Handle	39, 40
Bottle Holder	55

C

CADIERE Coagulation and Dissection Electrode	37
CADIERE Suction and Irrigation Handle	48
Cannula	8, 9, 10, 13, 14, 15
CLICK'line® BABCOCK Grasping Forceps	26, 31, 32
CLICK'line® BLAKESLEY Dissecting and Biopsy Forceps	34
CLICK'line® Dissecting and Biopsy Forceps	34
CLICK'line® Dissecting and Grasping Forceps	27, 28, 31, 32
CLICK'line® Forceps Insert	27, 28, 29, 30, 31, 32, 34
CLICK'line® GEIGER Pyloric Grasper	36, 56
CLICK'line® Grasping Forceps	27, 28, 29, 30, 31, 32, 56
CLICK'line® KELLY Dissecting and Grasping Forceps	26, 27, 28, 56
CLICK'line® KOH Grasping Forceps	29, 30
CLICK'line® Metal Handle	22, 23, 26, 28, 30, 32
CLICK'line® Metal Outer Sheath	24
CLICK'line® Metal Outer Sheath, insulated	24
CLICK'line® Metal Outer Sheath with BABCOCK Grasping Forceps Insert	26
CLICK'line® METZENBAUM Scissors	33, 56
CLICK'line® Micro Hook Scissors	34, 56
CLICK'line® Outer Sheath	24
CLICK'line® Outer Sheath with Forceps Insert	26
CLICK'line® Outer Sheath with METZENBAUM Scissors Insert	33
CLICK'line® Outer Sheath with REDDICK-OLSEN Forceps Insert	26
CLICK'line® Palpation Probe	43, 56
CLICK'line® Percutaneous Pyloric Spreader	36, 56
CLICK'line® Plastic Handle	19, 20, 21, 26, 27, 29, 31, 33, 34
CLICK'line® REDDICK-OLSEN Dissecting and Grasping Forceps	26, 29, 30, 56
CLICK'line® ROTHENBERG Bowel Grasper	31, 32
CLICK'line® Scissors	34, 56
CLICK'line® Scissors Insert	34
CLICK'line® TAN Pyloric Spreader and Grasping Forceps	31, 32
Coagulation and Dissection Electrode	37, 56
Cold Light Fountain POWER LED 300 SCB	55
Cold Light Fountain POWER LED RUBINA	55

Color-Coded Plug	25, 41
Complete Tubing Set	51

D

Distance Holder	16
-----------------	----

E

Earth Leakage Monitor	55
ENDOFLATOR® 50 SCB	55
ENDOMAT® SELECT	55
Equipment Cart	55

F

Fiber Optic Light Cable	55, 56
Fixation Tube	12
Flexible Video Choledochoscope	55
Footswitch Holder	55

H

Handle	48, 49, 50
Handle with Trumpet Valve	48, 49
Handle with Two-Way Stopcock	48, 49, 56
HOPKINS® Forward-Oblique Telescope 30°	2, 3
HOPKINS® RUBINA 0°	3
HOPKINS® RUBINA 30°	3
HOPKINS® RUBINA 45°	3
HOPKINS® Straight Forward Telescope 0°	2, 3, 56

I

IMAGE1 S CONNECT®	55
IMAGE1 S CONNECT® II	55
IMAGE1 S™ H3-LINK	55
IMAGE1 S™ X-LINK	55
IMAGE1 S™ 4U-LINK	55
IMAGE1 S™ 4U One-Chip 4K UHD Camera Head	55
IMAGE1 S™ 4U RUBINA	55
IMAGE1 S™ H3-Z Three-Chip FULL HD Camera Head	55
Insufflation Tubing Set with Gas Filter	55
Isolation Transformer	55

K

Knife Insert	35
Knot Tier	47
KOH Ultramicro High Frequency Electrode	38
KOH Ultramicro Injection Cannula	45
KOH Ultramicro Needle Holder	46, 56

L

LIMA Needle Holder	46
Liver Retractor	43

M

MENGHINI Liver Biopsy Needle	45
Monitor Holder	55
Monitor Holder Adaptor	55

Index

PEDIATRIC SURGERY – LAPAROSCOPY

Monitor Holding Arm	55
N	
NATHANSON Liver Retractor	43
Neutral Electrode	55
Neutral Electrode Connecting Cable	55
O	
One-Pedal Footswitch	55
P	
Palpation Probe	43
Plug	25, 41
Pyloric Knife	35, 56
R	
Reduction Sleeve	16
ROBI® Grasping Forceps	42, 56
ROBI® KELLY Grasping Forceps	42, 56
ROBI® KELLY Outer Sheath with Forceps Insert	42
ROBI® Outer-Sheath-with-Forceps-Insert	42
ROBI® Outer Sheath with Scissors Insert	42
ROBI® Plastic Handle	41, 42
ROBI® Scissors	42, 56
ROBI® TAN Grasping Forceps	42
ROBI® TAN Outer Sheath with Forceps Insert	42
ROTALOCK® Cannula	12
ROTALOCK® Trocar only	12
Rotating Wheel	25, 41
S	
SAWALHE Needle Holder	46
SCARFI Trocar	15
SCARFI Trocar only	15
Signal Converter Set 12G-SDI	55
Silicone Leaflet Valve	13, 14, 15
Silicone Tubing Set	49
Smoke Evacuation Filter	55
Spare Needle Electrode	38
S-PILOT®	55
Suction and Irrigation Tube	52, 56
SURGERY Software	55
T	
TAKE-APART® Bipolar Coagulation Forceps	40
TAKE-APART® Bipolar Ring Handle	39, 40
TAKE-APART® Forceps Insert	40
TAKE-APART® Outer Sheath	39
TAKE-APART® TAN Bipolar Coagulation Forceps	40
TAKE-APART® TAN Forceps Insert	40
TAN Endotome	35
TAN ROTALOCK® Trocar	12
Telescope Stopper	6
TERNAMIAN ENDOTIP Cannula	6
Thread Sleeve	16

Trocar	8, 9, 10, 13, 14, 15, 56
Trocar only	8, 9, 10, 13, 14, 15
Tubing Set	49, 51
Tubing Set for Irrigation	51, 55
Tubing Set for Smoke, Gas and Fluid Suction	55
Two-Pedal Footswitch USB	55
Two-Pedal HF Footswitch	55
U	
Unipolar High Frequency Cord	44, 56
USB Adaptor	55
V	
Valve Seal	8, 9, 10, 12
VERESS Pneumoperitoneum Needle	6, 56
Y	
YEUNG Pediatric Inguinal Herniotomy Hook Needle	45

Numerical Index

PEDIATRIC SURGERY – LAPAROSCOPY



021099-10	8	26167 RNS	46, 56	30114 ZG	9
021199-10	9, 12	26167 SNL	46	30114 ZS	9
021299-10	10, 12	26167 TNL	43	30117 A	14
031111-10	55	26167 TNS	43	30117 A1	6
031132-10	49	26176 LE	44, 56	30117 AK	14
031133-10	51	26176 LM	44	30117 AM	14
031134-10	51	26176 LV	44	30117 CS	6
031210-10	55	26176 LW	44	30117 G1	14
031219-10	51	26184 H	39	30117 G2	14
031447-10	55	26184 HA	40	30117 G3	14
031524-10	51, 55	26184 HAL	40	30117 GA	14
11292 VSK	55	26184 HAS	40	30117 GAK	14
11603 G1	13	26184 HC	40	30117 GAM	14
11603 G5	8	26184 HCL	40	30117 GP	14
11603 GK	13	26184 HCS	40	30117 GPK	14
11603 GZS	8	26184 HM	39, 40	30117 GPM	14
11603 K	13	26184 HPS	40	30117 L1	14
11603 L1	13	26184 HR	39, 40	30117 MT	6
11603 ZS	8	26184 HS	39	30117 P	14
20014130	55	26184 HSS	39	30117 PK	14
25775 CNL	37	26184 HT	40	30117 PM	14
26002 M	44	26184 HTL	40	30117 T2	6
26004 M	44	26184 HTS	40	30131	23
26005 M	44, 56	26184 HV	40	30140 KA	16
26006 M	44	26184 HVL	40	30160 A	15
26007 AA	2, 56	26184 HVS	40	30160 B	15
26007 BA	2	26184 MA	40	30160 C	15
26008 AA	2	26184 MAL	40	30160 D	16
26008 BA	2	26184 MAS	40	30160 G1	15
26011 AA	3, 56	26184 MPS	40	30160 G2	15
26011 BA	3	26184 PTS	40	30160 G3	15
26046 ARA	3	26184 RC	40	30160 G5	10
26046 BRA	3	26184 RCL	40	30160 G6	10
26046 FRA	3	26184 RCS	40	30160 GA	15
26120 J	6, 56	26870 UNL	37	30160 GB	15
26120 JK	6	26870 UNS	37, 56	30160 GC	15
26120 JL	6	27805	55	30160 GNG	10
26167 ANL	52	27806 UR	55	30160 GNS	10
26167 ANS	52, 56	29100	25, 41	30160 GP	15
26167 DFS	35	29100 A	25, 41	30160 GXK	15
26167 DNL	47	30114 G5	9	30160 GXM	15
26167 DNS	47	30114 G6	9	30160 GYG	10
26167 DRS	35, 56	30114 GNG	9	30160 GYK	15
26167 DTS	35	30114 GNS	9	30160 GYM	15
26167 GN	45	30114 GYG	9	30160 GYS	10, 56
26167 HH	45	30114 GYS	9	30160 GZG	10
26167 KNL	47	30114 GZG	9	30160 GZK	15
26167 KNS	47	30114 GZS	9, 56	30160 GZM	15
26167 KRS	35	30114 NG	9	30160 GZS	10
26167 LNL	46	30114 NS	9	30160 L1	15
26167 LNS	46, 56	30114 RB	12	30160 NG	10
26167 MNS	46	30114 RO	12	30160 NS	10
26167 NN	45	30114 RS	12	30160 P	15
26167>NNL	38	30114 RT	12	30160 RB	12
26167>NNX	38	30114 YG	9	30160 RO	12
26167 RNL	46	30114 YS	9	30160 RS	12

Numerical Index

PEDIATRIC SURGERY – LAPAROSCOPY

30160 RT	12	31110 ML	27, 28	31147 MGM	32
30160 S	16	31110 MW	34	31147 MLM	28
30160 X	15	31110 ON	27, 28	31147 ONM	28
30160 XK	15	31110 R	27, 28	31147 RM	28
30160 Y	15	31110 UL	29, 30	31147 ULM	30
30160 YG	10	31110 VT	31, 32	31147 VTM	32
30160 YK	15	31121 A	31	31149 A	31
30160 YS	10	31121 C	31	31149 C	31
30160 Z	15	31121 DB	34	31149 DB	34
30160 ZG	10	31121 EH	34	31149 EH	34
30160 ZK	15	31121 FA	29	31149 FA	29
30160 ZS	10	31121 FG	31	31149 FG	31
30200 FNS	46, 56	31121 FR	29	31149 FR	29
30210 KJS	26	31121 K	29	31149 K	29
30210 MDS	26	31121 MD	27	31149 MD	27
30210 MSS	33	31121 MG	31	31149 MG	31
30221 MSS	33	31121 ML	27	31149 ML	27
30240 AS	26	31121 MW	34	31149 MW	34
30246 AS	26	31121 ON	27	31149 ON	27
30246 KJS	26	31121 R	27	31149 R	27
30246 MDS	26	31121 UL	29	31149 UL	29
30247 AS	26	31121 VT	31	31149 VT	31
30247 KJS	26	31131 AM	32	31151 A	31
30247 MDS	26	31131 CM	32	31151 C	31
30249 MSS	33	31131 FAM	30	31151 DB	34
30251 KJS	26, 56	31131 FGM	32	31151 EH	34, 56
30251 MDS	26	31131 FRM	30	31151 FA	29
30251 MSS	33, 56	31131 KM	30	31151 FG	31
30252 KJS	26	31131 MDM	28	31151 FR	29
30252 MDS	26	31131 MGM	32	31151 K	29
30253 KJS	26	31131 MLM	28	31151 MD	27, 56
30253 MDS	26	31131 ONM	28	31151 MG	31
30256 KJS	26	31131 RM	28	31151 ML	27
30256 MDS	26	31131 ULM	30	31151 MW	34, 56
30261 AS	26	31131 VTM	32	31151 ON	27
30261 MDS	26	31143 REM	43, 56	31151 R	27
30361 PS	36, 56	31146 AM	32	31151 UL	29, 56
30623 NAS	43	31146 CM	32	31151 VT	31
30804	48, 49	31146 FAM	30	31152 A	31
30805	48, 49, 56	31146 FGM	32	31152 C	31
30810	48, 49	31146 FRM	30	31152 FA	29
30811	49	31146 KM	30	31152 FG	31
31100	24	31146 MDM	28	31152 FR	29
31100 M	24	31146 MGM	32	31152 K	29
31100 S	24	31146 MLM	28	31152 MD	27
31100 SM	24	31146 ONM	28	31152 MG	31
31110 A	31, 32	31146 RM	28	31152 ML	27
31110 C	31, 32	31146 ULM	30	31152 ON	27
31110 DB	34	31146 VTM	32	31152 R	27
31110 EH	34	31147 AM	32	31152 UL	29
31110 FA	29, 30	31147 CM	32	31152 VT	31
31110 FG	31, 32	31147 FAM	30	31153 A	31
31110 FR	29, 30	31147 FGM	32	31153 C	31
31110 K	29, 30	31147 FRM	30	31153 FA	29
31110 MD	27, 28	31147 KM	30	31153 FG	31
31110 MG	31, 32	31147 MDM	28	31153 FR	29

Numerical Index

PEDIATRIC SURGERY – LAPAROSCOPY

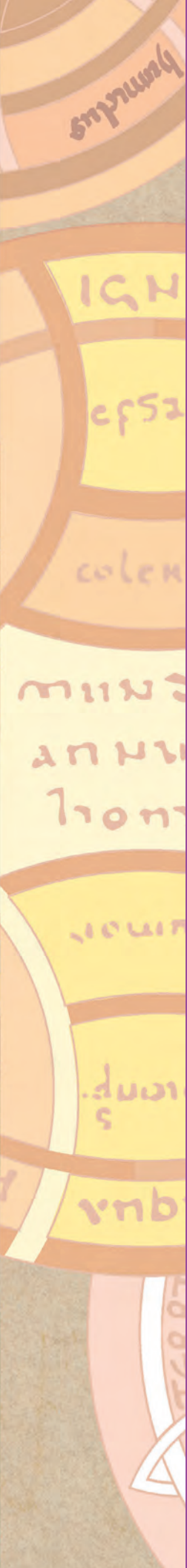
31153 K	29	31163 MLM	28	31331 FRM	30
31153 MD	27	31163 ONM	28	31331 KM	30
31153 MG	31	31163 RM	28	31331 MDM	28
31153 ML	27	31163 ULM	30	31331 MGM	32
31153 ON	27, 56	31163 VTM	32	31331 MLM	28
31153 R	27	31166 AM	32	31331 ONM	28
31153 UL	29	31166 CM	32	31331 RM	28
31153 VT	31	31166 FAM	30	31331 ULM	30
31156 A	31	31166 FGM	32	31331 VTM	32
31156 C	31	31166 FRM	30	31343 REM	43
31156 FA	29	31166 KM	30	31346 AM	32
31156 FG	31	31166 MDM	28	31346 CM	32
31156 FR	29	31166 MGM	32	31346 FAM	30
31156 K	29	31166 MLM	28	31346 FGM	32
31156 MD	27	31166 ONM	28	31346 FRM	30
31156 MG	31	31166 RM	28	31346 KM	30
31156 ML	27	31166 ULM	30	31346 MDM	28
31156 ON	27	31166 VTM	32	31346 MGM	32
31156 R	27	31300	24	31346 MLM	28
31156 UL	29	31300 M	24	31346 ONM	28
31156 VT	31	31310 A	31, 32	31346 RM	28
31161 AM	32	31310 C	31, 32	31346 ULM	30
31161 CM	32	31310 DB	34	31346 VTM	32
31161 FAM	30	31310 EH	34	31347 AM	32
31161 FGM	32	31310 FA	29, 30	31347 CM	32
31161 FRM	30	31310 FG	31, 32	31347 FAM	30
31161 KM	30	31310 FR	29, 30	31347 FGM	32
31161 MDM	28	31310 K	29, 30	31347 FRM	30
31161 MGM	32	31310 MD	27, 28	31347 KM	30
31161 MLM	28	31310 MG	31, 32	31347 MDM	28
31161 ONM	28	31310 ML	27, 28	31347 MGM	32
31161 PSM	36, 56	31310 MW	34	31347 MLM	28
31161 RM	28	31310 ON	27, 28	31347 ONM	28
31161 ULM	30	31310 R	27, 28	31347 RM	28
31161 VTM	32	31310 UL	29, 30	31347 ULM	30
31162 AM	32	31310 VT	31, 32	31347 VTM	32
31162 CM	32	31321 A	31	31349 A	31
31162 FAM	30	31321 C	31	31349 C	31
31162 FGM	32	31321 DB	34	31349 DB	34
31162 FRM	30	31321 EH	34	31349 EH	34
31162 KM	30	31321 FA	29	31349 FA	29
31162 MDM	28	31321 FG	31	31349 FG	31
31162 MGM	32	31321 FR	29	31349 FR	29
31162 MLM	28	31321 K	29	31349 K	29
31162 ONM	28	31321 MD	27	31349 MD	27
31162 RM	28	31321 MG	31	31349 MG	31
31162 ULM	30	31321 ML	27	31349 ML	27
31162 VTM	32	31321 MW	34	31349 MW	34
31163 AM	32	31321 ON	27	31349 ON	27
31163 CM	32	31321 R	27	31349 R	27
31163 FAM	30	31321 UL	29	31349 UL	29
31163 FGM	32	31321 VT	31	31349 VT	31
31163 FRM	30	31331 AM	32	31351 A	31
31163 KM	30	31331 CM	32	31351 C	31
31163 MDM	28	31331 FAM	30	31351 DB	34
31163 MGM	32	31331 FGM	32	31351 EH	34

Numerical Index

PEDIATRIC SURGERY – LAPAROSCOPY

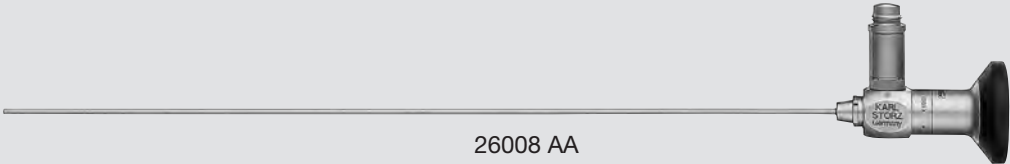
31351 FA	29	31361 KM	30	33139	23
31351 FG	31	31361 MDM	28	33141	23
31351 FR	29	31361 MGM	32	33146	23, 26, 28, 30, 32
31351 K	29	31361 MLM	28	33147	23, 26, 28, 30, 32
31351 MD	27	31361 ONM	28	33148	21
31351 MG	31	31361 RM	28	33149	21, 27, 29, 31, 33, 34
31351 ML	27	31361 ULM	30	33149 P	21
31351 MW	34	31361 VTM	32	33151	19, 26, 27, 29, 31, 33, 34
31351 ON	27	31362 AM	32	33152	19, 26, 27, 29, 31
31351 R	27	31362 CM	32	33153	19, 26, 27, 29, 31
31351 UL	29	31362 FAM	30	33156	19, 26, 27, 29, 31
31351 VT	31	31362 FGM	32	33161	22, 26, 28, 30, 32
31352 A	31	31362 FRM	30	33162	22, 28, 30, 32
31352 C	31	31362 KM	30	33163	22, 28, 30, 32
31352 FA	29	31362 MDM	28	33166	22, 28, 30, 32
31352 FG	31	31362 MGM	32	37112 A	48, 50
31352 FR	29	31362 MLM	28	37113 A	48, 50
31352 K	29	31362 ONM	28	38112 CS	48
31352 MD	27	31362 RM	28	38151	41, 42
31352 MG	31	31362 ULM	30	38810 MD	42
31352 ML	27	31362 VTM	32	38810 MW	42
31352 ON	27	31363 AM	32	38810 ON	42
31352 R	27	31363 CM	32	38810 PT	42
31352 UL	29	31363 FAM	30	38851 MD	42, 56
31352 VT	31	31363 FGM	32	38851 MW	42, 56
31353 A	31	31363 FRM	30	38851 ON	42, 56
31353 C	31	31363 KM	30	38851 PT	42
31353 FA	29	31363 MDM	28	38910 MD	42
31353 FG	31	31363 MGM	32	38910 MW	42
31353 FR	29	31363 MLM	28	38910 ON	42
31353 K	29	31363 ONM	28	38951 MD	42
31353 MD	27	31363 RM	28	38951 MW	42
31353 MG	31	31363 ULM	30	38951 ON	42
31353 ML	27	31363 VTM	32	495 NAC	56
31353 ON	27	31366 AM	32	495 NCSC	55
31353 R	27	31366 CM	32	TC 009	55
31353 UL	29	31366 FAM	30	TC 010	55
31353 VT	31	31366 FGM	32	TC 200EN	55
31356 A	31	31366 FRM	30	TC 201EN	55
31356 C	31	31366 KM	30	TC 300	55
31356 FA	29	31366 MDM	28	TC 301	55
31356 FG	31	31366 MGM	32	TC 304	55
31356 FR	29	31366 MLM	28	TH 100	55
31356 K	29	31366 ONM	28	TH 120	55
31356 MD	27	31366 RM	28	TH 121	55
31356 MG	31	31366 ULM	30	TL 300	55
31356 ML	27	31366 VTM	32	TL 400	55
31356 ON	27	33120 G	25, 41	TM 009	55
31356 R	27	33121	20, 27, 29, 31, 33, 34	TM 342	55
31356 UL	29	33121 W	20	TM 350	55
31356 VT	31	33122	20	TM 450	55
31361 AM	32	33123	20	UF 101	55
31361 CM	32	33126	20	UF 902	55
31361 FAM	30	33131	23, 28, 30, 32	UG 220	55
31361 FGM	32	33132	23	UG 310	55
31361 FRM	30	33133	23	UG 410	55

UG 500	55	UG 902	55	UP 501S1	55
UG 501	55	UH 400	55	UP 601	55
UG 520	55	UI 500S1	55	WD 350-EN	55
UG 609	55	UP 210	55		



LAPAROSCOPY

Diameter 2 mm, length 26 cm
Trocars size 2.5 mm



26008 AA



26008 AA

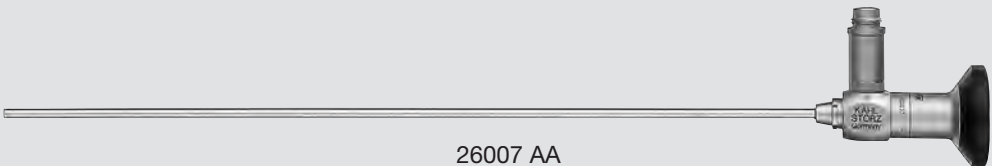
HOPKINS® Straight Forward Telescope 0°, diameter 2 mm, length 26 cm, **autoclavable**, fiber optic light transmission incorporated, color code: green



26008 BA

HOPKINS® Forward-Oblique Telescope 30°, diameter 2 mm, length 26 cm, **autoclavable**, fiber optic light transmission incorporated, color code: red

Diameter 3.3 mm, length 25 cm
Trocars size 3.9 mm



26007 AA



26007 AA

HOPKINS® Straight Forward Telescope 0°, enlarged view, diameter 3.3 mm, length 25 cm, **autoclavable**, fiber optic light transmission incorporated, color code: green



26007 BA

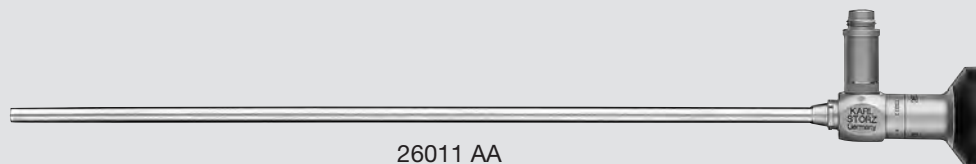
HOPKINS® Forward-Oblique Telescope 30°, enlarged view, diameter 3.3 mm, length 25 cm, **autoclavable**, fiber optic light transmission incorporated, color code: red

Trocars for use with telescopes diameter 2 mm see page 8
Trocars for use with telescopes diameter 3.3 mm see pages 6, 9, 12, 14
Containers for the Sterilization and Storage of Telescopes see HYGIENE catalog



Diameter 5 mm, length 24 cm

Trocar size 6 mm

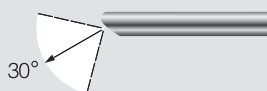


26011 AA



26011 AA

HOPKINS® Straight Forward Telescope 0°, enlarged view, diameter 5 mm, length 24 cm, **autoclavable**, fiber optic light transmission incorporated, color code: green

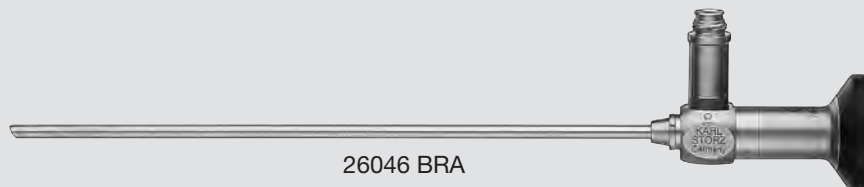


26011 BA

HOPKINS® Forward-Oblique Telescope 30°, enlarged view, diameter 5 mm, length 24 cm, **autoclavable**, fiber optic light transmission incorporated, color code: red

Diameter 5 mm, length 29 cm

Trocar size 6 mm fluorescence-assisted perfusion assessment with ICG

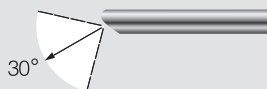


26046 BRA



26046 ARA

HOPKINS® RUBINA™ 0°, NIR/ICG, straight forward telescope 0°, enlarged view, diameter 5 mm, length 29 cm, **autoclavable**, for indocyanine green (ICG), fiber optic light transmission incorporated, color code: green



26046 BRA

HOPKINS® RUBINA™ 30°, NIR/ICG, forward-oblique telescope 30°, enlarged view, diameter 5 mm, length 29 cm, **autoclavable**, for indocyanine green (ICG), fiber optic light transmission incorporated, color code: red



26046 FRA

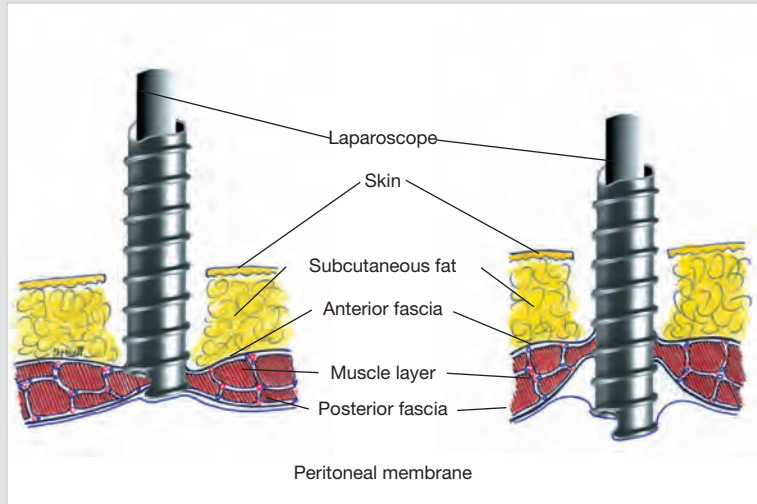
HOPKINS® RUBINA™ 45°, NIR/ICG, forward-oblique telescope 45°, enlarged view, diameter 5 mm, length 29 cm, **autoclavable**, for indocyanine green (ICG), fiber optic light transmission incorporated, color code: black

Trocars for use with telescopes diameter 5 mm see pages 10, 12, 15 and LAPAROSCOPY catalog

Containers for the Sterilization and Storage of Telescopes see HYGIENE catalog

The TERNAMIAN ENDOTIP System (Endoscopic Threaded Imaging Port) is a KARL STORZ instrument for optically controllable access to the abdominal cavity. It replaces conventional trocars and, due to its unique design, offers a range of notable advantages for both surgeon and patient.

- The tissue is not cut through as it is when punctured with a conventional trocar, but is merely displaced. The integrity of the fasciae is preserved, and, therefore, that of the fascial closure mechanism.
- As sharp points or cutting trocars are not used, the risk of unintentional injuries to the patient is eliminated.
- Since the TERNAMIAN ENDOTIP System is not pushed into the peritoneum by applying pressure, but is introduced by controlled rotation, injuries to organs caused by uncontrolled penetration of the abdominal wall are virtually impossible.
- In conjunction with a HOPKINS® telescope, the surgeon has an excellent, enlarged image of the point of penetration and is, therefore, able to carefully monitor

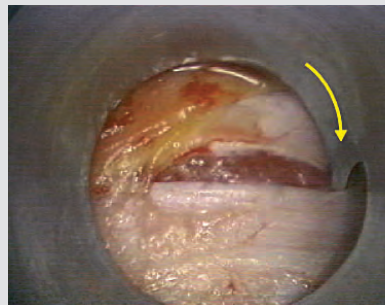


the penetration under optical control. The various tissue layers can be identified precisely.

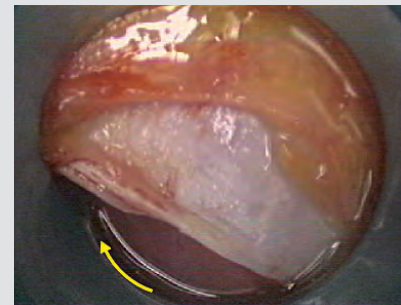
- The special design of the TERNAMIAN ENDOTIP System ensures a secure hold in the abdominal wall and prevents gas loss at the point of penetration.



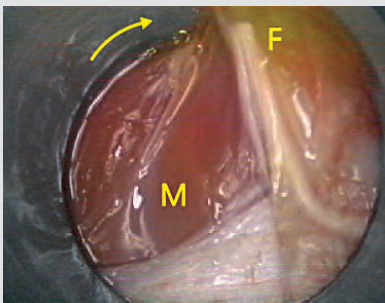
A small horizontal anterior rectus fascial incision is made under magnified video control. Blunt cannula tip (T).



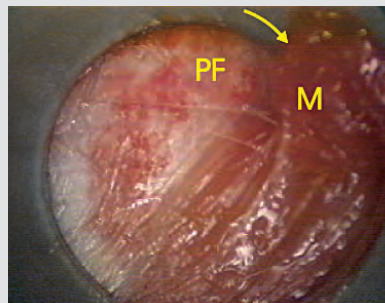
The TERNAMIAN ENDOTIP cannula is engaged in the anterior rectus fascial window and rotated clockwise.



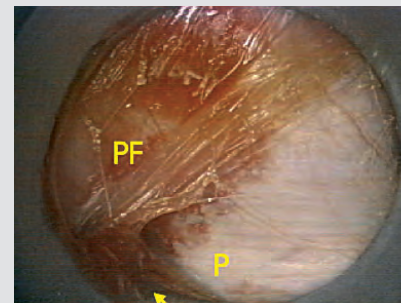
Under clear visual control the cannula advances atraumatically without applying axial penetration force.



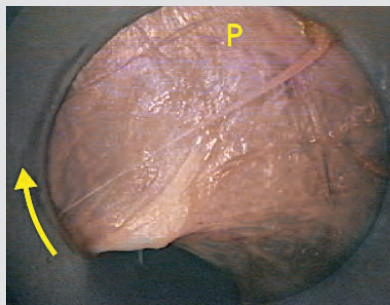
Rotation stretches radially, transposes and then lifts the anterior rectus fascia (F) and muscle (M) on to the cannula's outer thread.



The rectus muscle (M) is transposed laterally to expose the posterior rectus fascia (PF).



Further rotation will lift the posterior rectus fascia (PF) and advance the cannula to the pre-peritoneal space (P).



The thin peritoneal membrane transilluminates and appears blue-gray in color (P).



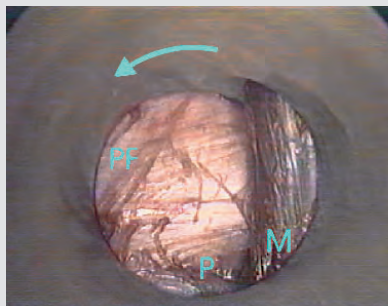
Continuous video control demonstrates different entry and exit layers clearly. This unique feature of the TERNAMIAN ENDOTIP System allows the surgeon to stop advancing the cannula if bowel, vessels or adhesions are observed.



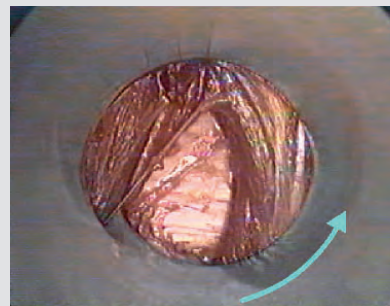
Access is under magnified visual control and atraumatic. Fascia and muscle fibers are not transected. The cannula's thread acts as a stabilizer to prevent slippage and discourage CO₂ leakage.



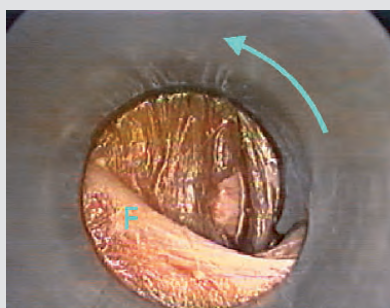
When the surgery is completed the cannula is rotated counter-clockwise. The different tissue layers disengage from the outer thread to converge in perfect apposition.



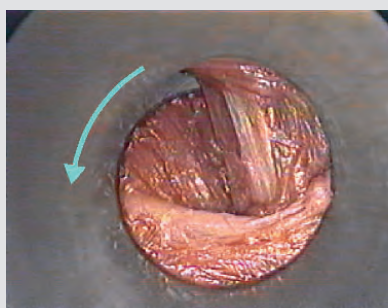
The peritoneum appears first (P), followed by the posterior rectus fascia (PF), rectus muscle (M), and then the anterior rectus fascia.



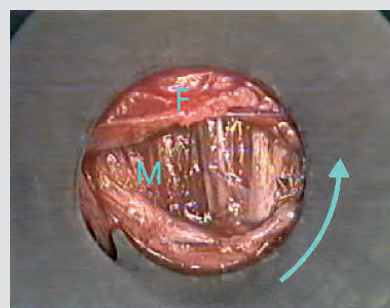
The rectus muscle fibers meet vertically to seal the peritoneal window, while the anterior rectus fascia shuts horizontally, to restore the natural tissue fiber orientation.



Since access is under visual control, hiatal or omental herniation along the cannula's tract is avoided. Lower half of anterior rectus fascia (F).



As sharp instruments or trocars are not used, muscle and fascial fibers are not transected and no tripolar fascial rent is sustained.



Tissue integrity is preserved at the access and exit site, maintaining the natural muscle shutter-mechanism.



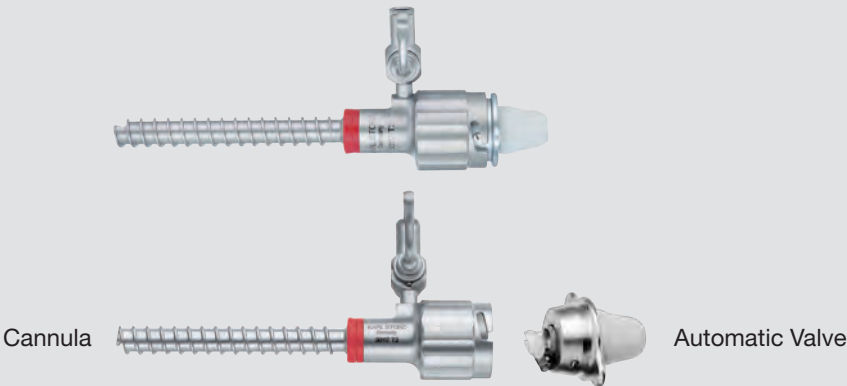
Video

TERNAMIAN ENDOTIP Cannulas

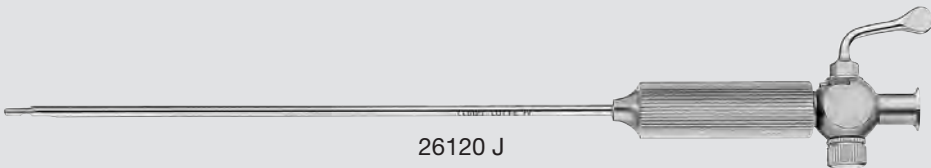
Size 3.9 mm

For use with instruments sizes 3/3.5 mm
and telescopes diameter 3.3 mm

US patents 5,478,329 and 5,630,805



Size:		3.9 mm
Working length:		5 cm
Color code:		red
	TERNAMIAN ENDOTIP Cannula including: Cannula , with thread and insufflation stopcock Automatic Valve	30117 MT
		30117 T2
		30117 A1
Accessory 	Telescope Stopper , sterile, for single use, package of 12 <div>STERILE </div>	30117 CS



- 26120 JK
- VERESS **Pneumoperitoneum Needle**, with
spring-loaded blunt inner cannula, LUER-Lock,
autoclavable, diameter 2.1 mm, length 7 cm
- 26120 J
- Same**, length 10 cm
- 26120 JL
- Same**, length 13 cm

Telescopes for use with TERNAMIAN **ENDOTIP** cannulas, size 3.9 mm see page 2




Trocars for Laparoscopy

Special Features:

- Ergonomic trocar design (ergonomically shaped trocar head) ensures a secure grip of the trocar during placement
 - Good balance (optimal weight distribution in the distal and proximal ends) thanks to lightweight design
 - Trocar housing and proximal end of the trocar made of colored plastic
 - Color coded in blue, green and black according to trocar size
- Valve seal for single use, included with each trocar set in packages of 10 (sterile)
 - Low friction between seal and instrument
 - Cannula is safely anchored in the abdominal wall
 - Trocars are available in sizes 2.5 mm, 3.5 mm and 6 mm with a length of 5 cm for laparoscopy in pediatric surgery



The new **valve seal** is a one-piece sealing system that is designed for single use (both sterile and unsterile versions available). A special feature is its lightweight construction and low friction between the seal and the instrument.

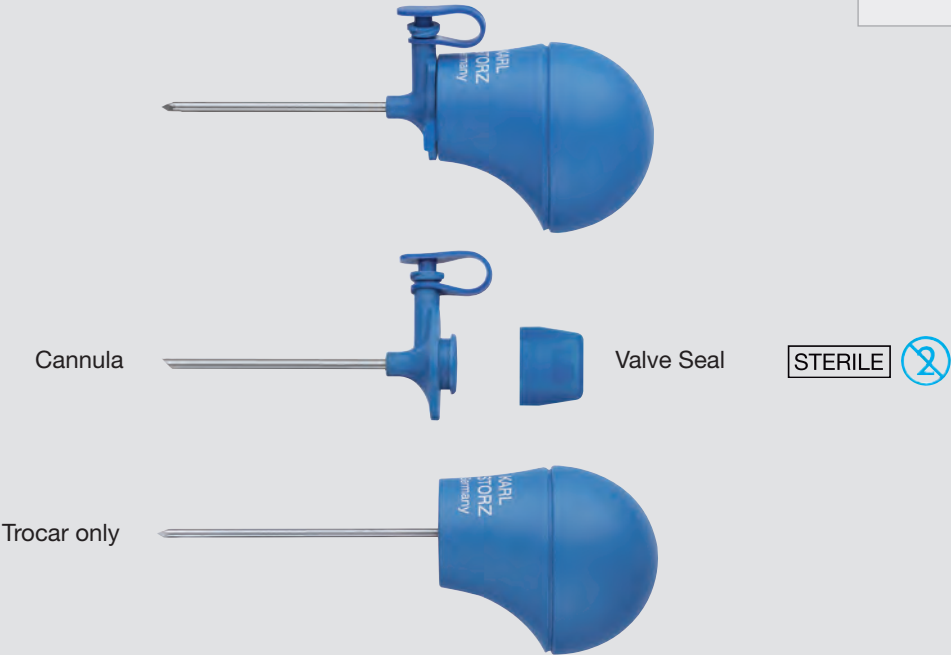
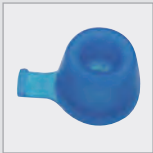
	STERILE 	unsterile 	
For trocars size 2.5 mm	021099-10	11603-XV2	
For trocars size 3.5 mm	021199-10	30114-XV3	
For trocars size 6 mm	021299-10	30160-XV5	



Trocars
Size 2.5 mm

For use with instruments size 2 mm

XS



Size:		2.5 mm
Working length:		5 cm
Color code:		blue
	Trocar , with pyramidal tip including:	11603 GZS
	Cannula , with LUER-Lock connector	11603 G5
	Trocar only	11603 ZS
	Valve Seal , sterile, for single use, package of 10	021099-10*



Telescopes for use with trocars size 2.5 mm see page 2

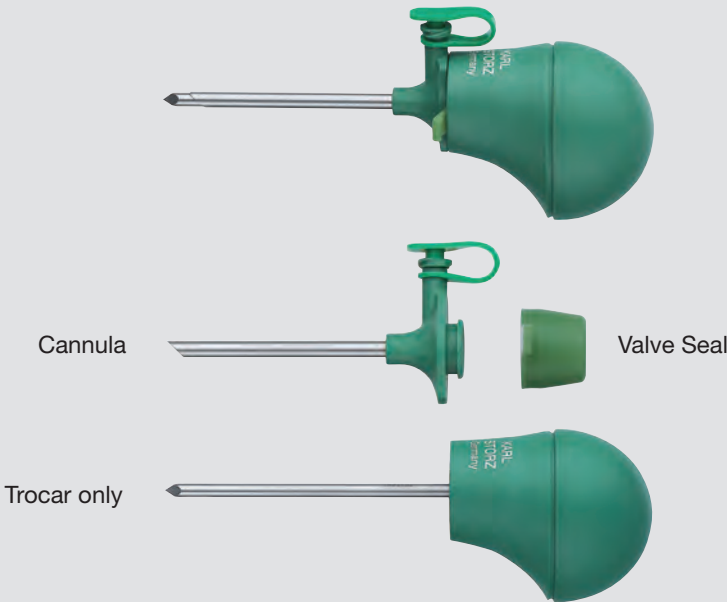
Trocars

Size 3.5 mm

For use with instruments sizes 3 and 3.5 mm

slimline

XS



STERILE



Size:		3.5 mm	
Working length:		5 cm	10 cm
Color code:		green	green
	Trocar , with pyramidal tip including:	30114 GZS	30114 GZG
	Cannula , with LUER-Lock connector	30114 G5	30114 G6
	Trocar only	30114 ZS	30114 ZG
	Valve Seal , sterile, for single use, package of 10	021199-10*	021199-10*
	Trocar , with blunt conical tip including:	30114 GNS	30114 GNG
	Cannula , with LUER-Lock connector	30114 G5	30114 G6
	Trocar only	30114 NS	30114 NG
	Valve Seal , sterile, for single use, package of 10	021199-10*	021199-10*
	Trocar , with conical tip including:	30114 GYS	30114 GYG
	Cannula , with LUER-Lock connector	30114 G5	30114 G6
	Trocar only	30114 YS	30114 YG
	Valve Seal , sterile, for single use, package of 10	021199-10*	021199-10*



Telescopes for use with trocars size 3.5 mm see page 2

Trocars
Size 6 mm

For use with instruments size 5 mm

XS



Size:		6 mm	
Working length:		5 cm	10 cm
Color code:		black	black
	Trocar , with pyramidal tip including: Cannula , with LUER-Lock connector Trocar only Valve Seal , sterile, for single use, package of 10	30160 GZS 30160 G5 30160 ZS 021299-10*	30160 GZG 30160 G6 30160 ZG 021299-10*
	Trocar , with blunt conical tip including: Cannula , with LUER-Lock connector Trocar only Valve Seal , sterile, for single use, package of 10	30160 GNS 30160 G5 30160 NS 021299-10*	30160 GNG 30160 G6 30160 NG 021299-10*
	Trocar , with conical tip including: Cannula , with LUER-Lock connector Trocar only Valve Seal , sterile, for single use, package of 10	30160 GYS 30160 G5 30160 YS 021299-10*	30160 GYG 30160 G6 30160 YG 021299-10*



Telescopes for use with trocars size 6 mm see page 3

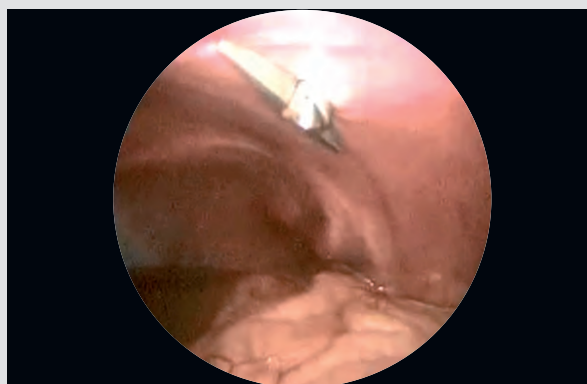
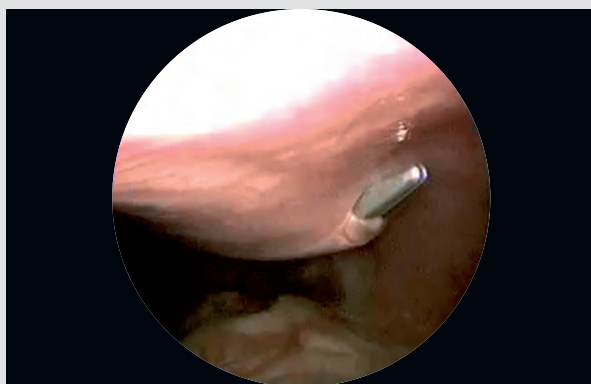
TAN ROTALOCK® Trocar

Sizes 3.5 and 6 mm



Special Features:

- Distal tip of the cannula enables fixation directly under the abdominal wall and prevents the cannula from slipping out of the abdominal wall
- Due to the short length of the sheath, the distal tip of the cannula does not hinder opening of the jaws
- One-piece sealing system for single use. A package of 10 sterile valve seals are included with each trocar set.
- Available in sizes 3.5 and 6 mm

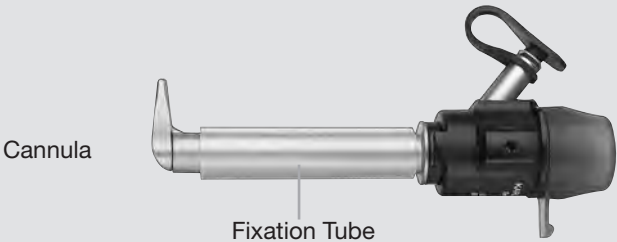


Figs. 1-4: Introducing the ROTALOCK® trocar

TAN ROTALOCK® Trocar
Sizes 3.5 and 6 mm

RoTaLock

XS



Valve Seal **STERILE**



For use with instruments sizes 3 and 3.5 mm

Size:		3.5 mm
Working length:		3 cm
Color code:		green
	TAN ROTALOCK® Trocar including: Cannula , without LUER-Lock connector Valve Seal , sterile, for single use, package of 10 Fixation Tube , package of 5	30114 RO 30114 RT 021199-10* 30114 RS
Optional:	Trocar only	30114 RB

For use with instruments size 5 mm

Size:		6 mm
Working length:		5 cm
Color code:		black
	TAN ROTALOCK® Trocar including: Cannula , with LUER-Lock connector Valve Seal , sterile, for single use, package of 10 Fixation Tube , package of 5	30160 RO 30160 RT 021299-10* 30160 RS
Optional:	Trocar only	30160 RB




Telescopes for use with trocars size 3.5 mm see page 2 and size 5 mm see page 3

Trocars
Size 2.5 mm

For use with instruments size 2 mm



Size:		2.5 mm
Working length:		4 cm
Color code:		blue
	Trocar, with pyramidal tip including: Cannula, with LUER-Lock connector Trocar only Silicone Leaflet Valve	11603 GK
		11603 G1
		11603 K
		11603 L1

Telescopes for use with trocars size 2.5 mm see page 2

Trocars
Size 3.9 mm

For use with instruments sizes 3 and 3.5 mm as well as
telescopes diameter 3.3 mm

slimline

XS



Size:		3.9 mm		
Working length:		5 cm	7.5 cm	10 cm
Color code:		red	red-white	red-green
	Trocar , with pyramidal tip including: Cannula , with LUER-Lock connector Trocar only Silicone Leaflet Valve	30117 GPK	30117 GPM	30117 GP
		30117 G3	30117 G2	30117 G1
		30117 PK	30117 PM	30117 P
		30117 L1	30117 L1	30117 L1
	Trocar , with blunt tip including: Cannula , with LUER-Lock connector Trocar only Silicone Leaflet Valve	30117 GAK	30117 GAM	30117 GA
		30117 G3	30117 G2	30117 G1
		30117 AK	30117 AM	30117 A
		30117 L1	30117 L1	30117 L1

Telescopes for use with trocars size 3.9 mm see page 2

Trocars

Size 6 mm

For use with instruments size 5 mm



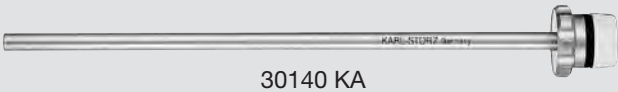
Size:		6 mm		
Working length:		5 cm	8.5 cm	10.5 cm
Color code:		black-green	black-white	black
	Trocar, with conical tip including: Cannula, with LUER-Lock connector Trocar only Silicone Leaflet Valve	30160 GYK	30160 GYM	30160 GC
		30160 G3	30160 G2	30160 G1
		30160 YK	30160 Y	30160 C
		30160 L1	30160 L1	30160 L1
	Trocar, with pyramidal tip including: Cannula, with LUER-Lock connector Trocar only Silicone Leaflet Valve	30160 GZK	30160 GZM	30160 GP
		30160 G3	30160 G2	30160 G1
		30160 ZK	30160 Z	30160 P
		30160 L1	30160 L1	30160 L1
	Trocar, with blunt tip including: Cannula, with LUER-Lock connector Trocar only Silicone Leaflet Valve	30160 G XK	30160 G XM	30160 GA
		30160 G3	30160 G2	30160 G1
		30160 XK	30160 X	30160 A
		30160 L1	30160 L1	30160 L1
	Trocar including: Cannula, with LUER-Lock connector Trocar only Silicone Leaflet Valve	—	—	30160 GB
				30160 G1
				30160 B
				30160 L1

Telescopes for use with trocars size 6 mm see page 3

Accessories

Reduction Sleeve, Thread Sleeve and Distance Holder

Reduction Sleeve



30140 KA

30140 KA

Reduction Sleeve, reusable,
instrument diameter 3 and 3.5 mm,
cannula outer diameter 6 mm,
color code: black

Thread Sleeve



30160 S

30160 S

Thread Sleeve, for trocars size 6 mm,
color code: black

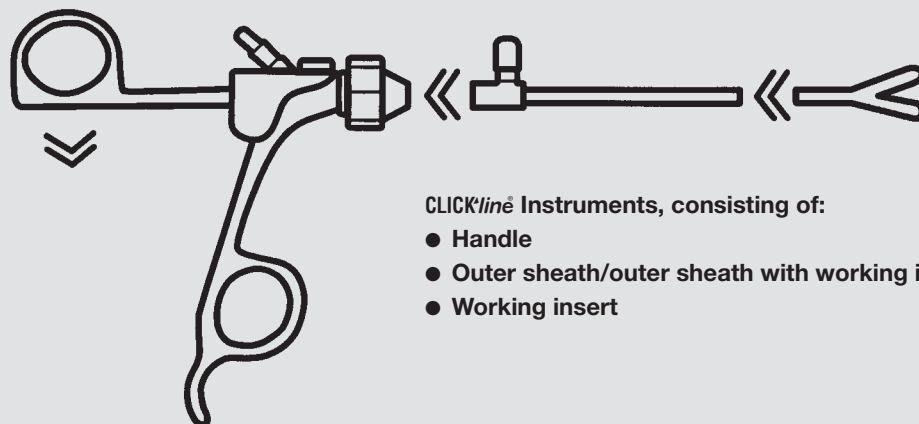
Distance Holder, to limit the depth of puncture



30160 D

30160 D

Distance Holder, for trocars size 6 mm,
color code: black



CLICK^{line} Instruments, consisting of:

- Handle
- Outer sheath/outer sheath with working insert
- Working insert

The **CLICK^{line}** series continues the development of instruments which have proven their value for years.

When the rear handle is positioned horizontally, the handle can be separated from the outer sheath and the working insert at the press of a button.

The HF connection is mounted at a 45° angle on the upper side of the handle, thereby guiding the high frequency cable away from the field of operation.

Available in size 2 to 10 mm, CLICK^{line} instruments can be completely disassembled into separate components:

- Handle
- Outer sheath/outer sheath with working insert
- Working insert

This reusable two/three-piece design offers the surgeon the following benefits:

- Available in sizes 2, 3, 3.5, 5 and 10 mm and lengths 20, 30, 36 and 43 cm
- Choice of handle styles
- Can be dismantled at the press of a button
- Completely autoclavable design
- If damage occurs, only the component with the defect needs to be replaced – not the entire instrument
- Cleaning port allows the instrument to be cleaned without disassembly

Due to the modular CLICK^{line} system, the user can individually assemble the desired instrument at any time.

User Information

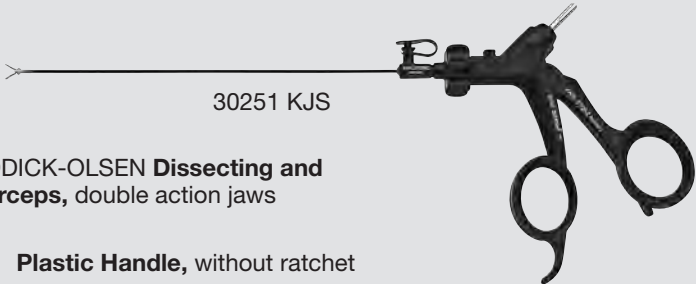
For easy location of the correct catalog number
for the required CLICK'line® instrument

How to find the required instrument:

- (a) Select the required **instrument size** and the required **type of jaws**
- (b) Select the required **handle style**
 - **Metal handles: without** connector pin for unipolar coagulation, against a **blue background** in the table
 - **Handles, insulated: with** connector pin for unipolar coagulation, against a **red background** in the table
- (c) The catalog number for the fully assembled instrument can be found at the point where the horizontal line of the respective working length (see below) intersects with the vertical column of the required handle.

Example:

30251 KJS **CLICK'line® REDDICK-OLSEN Dissecting and Grasping Forceps**, double action jaws including:
33151 **Plastic Handle**, without ratchet
30210 KJS **Outer Sheath**, with working insert



Dissecting and Grasping Forceps

CLICK'line® – rotating, dismantling,
with and without connector pin for unipolar coagulation

Size 2 mm						
Operating instruments, length 20 cm, for use with trocars size 2.5 mm						
(a)	Length	Handle				
		33151	(b) 33152	33153	33161	
	20 cm					
	Double action jaws					
(a)	Outer Sheath with Working Insert	Complete Instrument				
	30210 KJS	30251 KJS (c)	30252 KJS	30253 KJS	-	
		CLICK'line® REDDICK-OLSEN Dissecting and Grasping Forceps				
7						
— Jaw length in mm						

Please note:
For CLICK'line® instruments only the **individual component parts** are numbered. The catalog number for the **complete instrument** is **not** on the instrument. Instruments with **insulated handles with connector pin** for unipolar coagulation, are shown against the **red background**, instruments with **handles without connector pin** for unipolar coagulation are shown against the **blue background**. The color **green** indicates the **working lengths**.

Plastic Handles

for Dissecting and Grasping Forceps, insulated,
CLICK'line® – rotating, with connector pin for unipolar coagulation

Plastic Handles, with and without ratchets, with larger contact area at the finger ring – made of high-quality plastics, meeting high safety requirements for both patient and user



33151 **CLICK'line® Plastic Handle, without ratchet, with large contact area at the finger ring**



33152 **CLICK'line® Plastic Handle, with ratchet, with large contact area at the finger ring**



33153 **CLICK'line® Plastic Handle, with hemostat style ratchet, with large contact area at the finger ring**



33156 **CLICK'line® Plastic Handle, with disengageable ratchet, with large contact area at the finger ring**

Accessories for Handles see page 25

Plastic Handles

for Dissecting and Grasping Forceps, insulated,
CLICK'line – rotating, with connector pin for unipolar coagulation

Plastic Handles, with and without ratchets, made of high-quality plastics –
meet high safety requirements for both patient and user



33121 **CLICK'line Plastic Handle,
without ratchet**



33121 W **CLICK'line Plastic Handle,
without ratchet, without
finger rest**



33122 **CLICK'line Plastic Handle,
with ratchet**



33123 **CLICK'line Plastic Handle,
with hemostat style
ratchet**



33126 **CLICK'line Plastic Handle,
with disengageable
ratchet**

Accessories for Handles see page 25

Plastic Handles

for Dissecting and Grasping Forceps, insulated,
CLICK'linē – with connector pin for unipolar coagulation



33149 **CLICK'linē Plastic Handle**,
axial, rotating, **without**
ratchet, double action
shanks



33149 P **CLICK'linē Plastic Handle**,
axial, non-rotating,
without ratchet, double
action shanks, with
4 locking positions



33148 **CLICK'linē Plastic Handle**,
axial, rotating, **with**
ratchet, double action
shanks

Accessories for Handles see page 25

Metal Handles

for Dissecting and Grasping Forceps,
CLICK'line® – rotating, without connector pin for unipolar coagulation

Metal Handles, with or without ratchets, with larger contact area at the finger ring – made of high-quality plastics, meeting high safety requirements for both patient and user



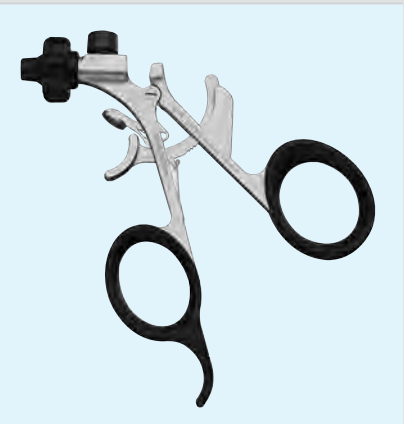
33161 **CLICK'line® Metal Handle, without ratchet, with large contact area at the finger ring**



33162 **CLICK'line® Metal Handle, with ratchet, with large contact area at the finger ring**



33163 **CLICK'line® Metal Handle, with hemostatic style ratchet, with large contact area at the finger ring**



33166 **CLICK'line® Metal Handle, with disengageable ratchet, with larger contact area at the finger ring**

Accessories for Handles see page 25

Metal Handles

for Dissecting and Grasping Forceps,
CLICK'line® – rotating, without connector pin for unipolar coagulation

Metal Handles, with or without ratchets



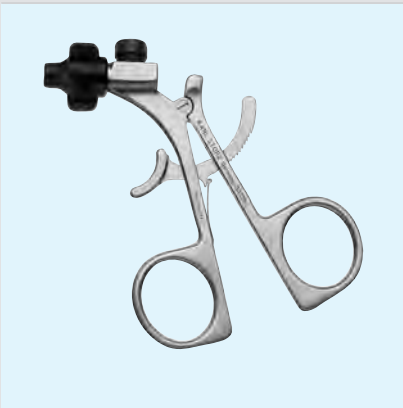
33131 **CLICK'line® Metal Handle, without ratchet**



33132 **CLICK'line® Metal Handle, with ratchet**



33133 **CLICK'line® Metal Handle, with hemostat style ratchet**



33139 **CLICK'line® Metal Handle, with ratchet**



33141 **CLICK'line® Metal Handle, with disengageable ratchet**



30131 **CLICK'line® Metal Handle, rotating, without ratchet, small**



33146 **CLICK'line® Metal Handle, axial, with hemostat style ratchet, double action handle shanks**

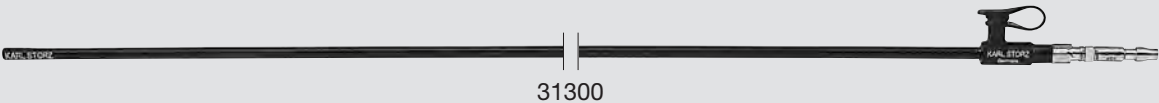


33147 **CLICK'line® Metal Handle, axial, without ratchet, double action handle shanks**

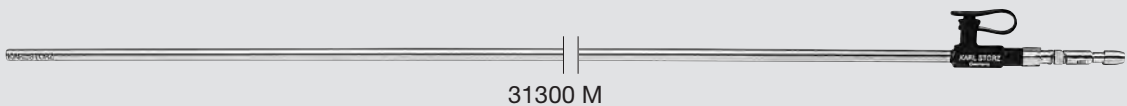
Accessories for Handles see page 25

Metal Outer Sheaths
for Dissecting and Grasping Forceps, *CLICK'line*

Size 3.5 mm



- 31100 **CLICK'line Metal Outer Sheath, insulated, with LUER-Lock**
irrigation connector for cleaning, size 3.5 mm, length 20 cm
- 31300 **Same, length 36 cm**






- 31100 M **CLICK'line Metal Outer Sheath, with LUER-Lock**
irrigation connector for cleaning, size 3.5 mm, length 20 cm
- 31300 M **Same, length 36 cm**

Clickline Metal Outer Sheaths are also available in 3 mm that can be used with the same working inserts:

- 31100 S **CLICK'line Outer Sheath, insulated, with LUER-Lock**
connector for cleaning, size 3 mm, length 20 cm
- 31100 SM **CLICK'line Metal Outer Sheath, with LUER-Lock connector**
for cleaning, size 3 mm, length 20 cm

Please note:
The metal outer sheaths (non-insulated) may only be used in conjunction with handles without a connector pin for unipolar coagulation.
Working Inserts for use with CLICK'line outer sheaths in sizes 3 and 3.5 mm see pages 27-32 and 34
Accessories for Outer Sheaths see page 25

Accessories for Handles and Outer Sheaths

	<div>33120 G</div> <div> Rotating Wheel, for CLICK'liné and ROBI® handles, autoclavable, makes rotation of outer sheath more comfortable, package of 5 </div> 
	<div>29100</div> <div> Plug, for LUER-Lock irrigation connector for cleaning, black, autoclavable, package of 10 </div> <div>29100 A</div> <div> Color-Coded Plug, for LUER-Lock irrigation connector for cleaning, red, green, black, 10 each, package of 30 </div>

Dissecting and Grasping Forceps

CLICK^{line} – rotating, dismantling,
with or without connector pin for unipolar coagulation

Size 2 mm

Operating instruments, length 20 cm,
for use with trocars size 2.5 mm



Length	Handle						
	33151	33152	33153	33156	33161	33146	33147
20 cm							

Double action jaws

Outer Sheath with Working Insert	Complete Instrument						
30240 AS	—	—	—	—	30261 AS	30246 AS	30247 AS
 12	CLICK ^{line} BABCOCK Grasping Forceps, atraumatic, fenestrated						
30210 KJS	30251 KJS	30252 KJS	30253 KJS	30256 KJS	—	30246 KJS	30247 KJS
 7	CLICK ^{line} REDDICK-OLSEN Dissecting and Grasping Forceps						
30210 MDS	30251 MDS	30252 MDS	30253 MDS	30256 MDS	30261 MDS	30246 MDS	30247 MDS
 6	CLICK ^{line} KELLY Dissecting and Grasping Forceps						

Dissecting and Grasping Forceps

CLICK'linē – rotating, dismantling, insulated,
with connector pin for unipolar coagulation

Size 3.5 mm

Operating instruments, lengths 20 and 36 cm,
for use with trocars sizes 3.5 and 3.9 mm

slimline

XS

↓

unipolar

Length	Handle					
	33151	33152	33153	33156	33121	33149
20 cm						
36 cm						

Double action jaws

Working Insert	Complete Instrument					
31110 ML	31151 ML	31152 ML	31153 ML	31156 ML	31121 ML	31149 ML
31310 ML	31351 ML	31352 ML	31353 ML	31356 ML	31321 ML	31349 ML



CLICK'linē KELLY Dissecting and Grasping Forceps, long

31110 MD	31151 MD	31152 MD	31153 MD	31156 MD	31121 MD	31149 MD
31310 MD	31351 MD	31352 MD	31353 MD	31356 MD	31321 MD	31349 MD



CLICK'linē KELLY Dissecting and Grasping Forceps

31110 R	31151 R	31152 R	31153 R	31156 R	31121 R	31149 R
31310 R	31351 R	31352 R	31353 R	31356 R	31321 R	31349 R



CLICK'linē Dissecting and Grasping Forceps, jaws right-angled

Single action jaws

31110 ON	31151 ON	31152 ON	31153 ON	31156 ON	31121 ON	31149 ON
31310 ON	31351 ON	31352 ON	31353 ON	31356 ON	31321 ON	31349 ON



CLICK'linē Grasping Forceps, fenestrated, with especially fine atraumatic serration

Dissecting and Grasping Forceps

CLICK'line – rotating, dismantling,
without connector pin for unipolar coagulation

slimline



Size 3.5 mm

Operating instruments, lengths 20 and 36 cm,
for use with trocars sizes 3.5 and 3.9 mm

Length	Handle						
	33161	33162	33163	33166	33131	33146	33147
20 cm							
36 cm							

Double action jaws

Working Insert	Complete Instrument						
31110 ML	31161 MLM	31162 MLM	31163 MLM	31166 MLM	31131 MLM	31146 MLM	31147 MLM
31310 ML	31361 MLM	31362 MLM	31363 MLM	31366 MLM	31331 MLM	31346 MLM	31347 MLM



CLICK'line KELLY Dissecting and Grasping Forceps, long

31110 MD	31161 MDM	31162 MDM	31163 MDM	31166 MDM	31131 MDM	31146 MDM	31147 MDM
31310 MD	31361 MDM	31362 MDM	31363 MDM	31366 MDM	31331 MDM	31346 MDM	31347 MDM



CLICK'line KELLY Dissecting and Grasping Forceps

31110 R	31161 RM	31162 RM	31163 RM	31166 RM	31131 RM	31146 RM	31147 RM
31310 R	31361 RM	31362 RM	31363 RM	31366 RM	31331 RM	31346 RM	31347 RM



CLICK'line Dissecting and Grasping Forceps, jaws right-angled

Single action jaws

31110 ON	31161 ONM	31162 ONM	31163 ONM	31166 ONM	31131 ONM	31146 ONM	31147 ONM
31310 ON	31361 ONM	31362 ONM	31363 ONM	31366 ONM	31331 ONM	31346 ONM	31347 ONM



CLICK'line Grasping Forceps, fenestrated, with especially fine atraumatic serration

Dissecting and Grasping Forceps

CLICK'linē – rotating, dismantling, insulated
with connector pin for unipolar coagulation







Size 3.5 mm

slimline

XS

↓
unipolar

Operating instruments, lengths 20 and 36 cm,
for use with trocars sizes 3.5 and 3.9 mm

Length	Handle					
	33151	33152	33153	33156	33121	33149
20 cm						
36 cm						

Double action jaws

Working Insert	Complete Instrument					
31110 UL	31151 UL	31152 UL	31153 UL	31156 UL	31121 UL	31149 UL
31310 UL	31351 UL	31352 UL	31353 UL	31356 UL	31321 UL	31349 UL



CLICK'linē REDDICK-OLSEN Dissecting and Grasping Forceps, robust

31110 K	31151 K	31152 K	31153 K	31156 K	31121 K	31149 K
31310 K	31351 K	31352 K	31353 K	31356 K	31321 K	31349 K



CLICK'linē Grasping Forceps, atraumatic, fenestrated

Single action jaws

31110 FA	31151 FA	31152 FA	31153 FA	31156 FA	31121 FA	31149 FA
31310 FA	31351 FA	31352 FA	31353 FA	31356 FA	31321 FA	31349 FA



CLICK'linē KOH Grasping Forceps, straight

31110 FR	31151 FR	31152 FR	31153 FR	31156 FR	31121 FR	31149 FR
31310 FR	31351 FR	31352 FR	31353 FR	31356 FR	31321 FR	31349 FR



CLICK'linē KOH Grasping Forceps, curved to right,
for ipsilateral suturing technique

Dissecting and Grasping Forceps

CLICK'liné – rotating, dismantling,
without connector pin for unipolar coagulation

Size 3.5 mm

slimline



Operating instruments, lengths 20 and 36 cm,
for use with trocars sizes 3.5 and 3.9 mm

Length	Handle						
	33161	33162	33163	33166	33131	33146	33147
20 cm							
36 cm							

Double action jaws

Working Insert	Complete Instrument						
31110 UL	31161 ULM	31162 ULM	31163 ULM	31166 ULM	31131 ULM	31146 ULM	31147 ULM
31310 UL	31361 ULM	31362 ULM	31363 ULM	31366 ULM	31331 ULM	31346 ULM	31347 ULM



CLICK'liné REDDICK-OLSEN Dissecting and Grasping Forceps, robust

31110 K	31161 KM	31162 KM	31163 KM	31166 KM	31131 KM	31146 KM	31147 KM
31310 K	31361 KM	31362 KM	31363 KM	31366 KM	31331 KM	31346 KM	31347 KM



CLICK'liné Grasping Forceps, atraumatic, fenestrated

Single action jaws

31110 FA	31161 FAM	31162 FAM	31163 FAM	31166 FAM	31131 FAM	31146 FAM	31147 FAM
31310 FA	31361 FAM	31362 FAM	31363 FAM	31366 FAM	31331 FAM	31346 FAM	31347 FAM



CLICK'liné KOH Grasping Forceps, straight

31110 FR	31161 FRM	31162 FRM	31163 FRM	31166 FRM	31131 FRM	31146 FRM	31147 FRM
31310 FR	31361 FRM	31362 FRM	31363 FRM	31366 FRM	31331 FRM	31346 FRM	31347 FRM



CLICK'liné KOH Grasping Forceps, curved to right,
for ipsilateral suturing technique

Dissecting and Grasping Forceps

CLICK^{line} – rotating, dismantling, insulated
with connector pin for unipolar coagulation

Size 3.5 mm

slimline



Operating instruments, lengths 20 and 36 cm,
for use with trocars sizes 3.5 and 3.9 mm

Length	Handle					
	33151	33152	33153	33156	33121	33149
20 cm						
36 cm						

Double action jaws

Working Insert	Complete Instrument					
31110 A	31151 A	31152 A	31153 A	31156 A	31121 A	31149 A
31310 A	31351 A	31352 A	31353 A	31356 A	31321 A	31349 A



CLICK^{line} BABCOCK Grasping Forceps, atraumatic, fenestrated

31110 C	31151 C	31152 C	31153 C	31156 C	31121 C	31149 C
31310 C	31351 C	31352 C	31353 C	31356 C	31321 C	31349 C



CLICK^{line} ROTHENBERG Bowel Grasper

31110 VT	31151 VT	31152 VT	31153 VT	31156 VT	31121 VT	31149 VT
31310 VT	31351 VT	31352 VT	31353 VT	31356 VT	31321 VT	31349 VT



CLICK^{line} TAN Pyloric Spreader and Grasping Forceps,
in- and outside serrated jaws

31110 MG	31151 MG	31152 MG	31153 MG	31156 MG	31121 MG	31149 MG
31310 MG	31351 MG	31352 MG	31353 MG	31356 MG	31321 MG	31349 MG



CLICK^{line} Dissecting and Grasping Forceps, "tiger jaws", 2 x 4 teeth

31110 FG	31151 FG	31152 FG	31153 FG	31156 FG	31121 FG	31149 FG
31310 FG	31351 FG	31352 FG	31353 FG	31356 FG	31321 FG	31349 FG



CLICK^{line} Grasping Forceps, atraumatic, wavy serration

Dissecting and Grasping Forceps

CLICK*line*® – rotating, dismantling,
without connector pin for unipolar coagulation

slimline



Size 3.5 mm

Operating instruments, lengths 20 and 36 cm,
for use with trocars sizes 3.5 and 3.9 mm

Length	Handle						
	33161	33162	33163	33166	33131	33146	33147
20 cm							
36 cm							

Double action jaws

Working Insert	Complete Instrument						
31110 A	31161 AM	31162 AM	31163 AM	31166 AM	31131 AM	31146 AM	31147 AM
31310 A	31361 AM	31362 AM	31363 AM	31366 AM	31331 AM	31346 AM	31347 AM



CLICK*line*® BABCOCK Grasping Forceps, atraumatic, fenestrated

31110 C	31161 CM	31162 CM	31163 CM	31166 CM	31131 CM	31146 CM	31147 CM
31310 C	31361 CM	31362 CM	31363 CM	31366 CM	31331 CM	31346 CM	31347 CM



CLICK*line*® ROTHENBERG Bowel Grasper

31110 VT	31161 VTM	31162 VTM	31163 VTM	31166 VTM	31131 VTM	31146 VTM	31147 VTM
31310 VT	31361 VTM	31362 VTM	31363 VTM	31366 VTM	31331 VTM	31346 VTM	31347 VTM



CLICK*line*® TAN Pyloric Spreader and Grasping Forceps,
in- and outside serrated jaws

31110 MG	31161 MGM	31162 MGM	31163 MGM	31166 MGM	31131 MGM	31146 MGM	31147 MGM
31310 MG	31361 MGM	31362 MGM	31363 MGM	31366 MGM	31331 MGM	31346 MGM	31347 MGM



CLICK*line*® Dissecting and Grasping Forceps, "tiger jaws", 2 x 4 teeth

31110 FG	31161 FGM	31162 FGM	31163 FGM	31166 FGM	31131 FGM	31146 FGM	31147 FGM
31310 FG	31361 FGM	31362 FGM	31363 FGM	31366 FGM	31331 FGM	31346 FGM	31347 FGM



CLICK*line*® Grasping Forceps, atraumatic, wavy serration

Scissors

CLICK'line – rotating, dismantling, insulated
with connector pin for unipolar coagulation


Size 2 mm

Operating instruments, **length 20 cm**,
for use **with trocars size 2.5 mm**



Length	Handle		
	33151	33121	33149
20 cm			

Double action jaws

Outer Sheath with Working Insert	Complete Instrument		
30210 MSS	30251 MSS	30221 MSS	30249 MSS
 <div>6</div>	CLICK'line METZENBAUM Scissors, curved		

Scissors, Punches and Forceps for Biopsy

CLICK^{line} – rotating, dismantling, insulated,
with connector pin for unipolar coagulation

Size 3.5 mm


Operating instruments, lengths 20 and 36 cm,
for use with trocars sizes 3.5 and 3.9 mm

slimline



Length	Handle		
	33151	33121	33149
20 cm			
36 cm			

Double action jaws

Working Insert	Complete Instrument		
31110 MW	31151 MW	31121 MW	31149 MW
31310 MW	31351 MW	31321 MW	31349 MW
	CLICK ^{line} Scissors, serrated, curved, conical		

Single action jaws

31110 EH	31151 EH	31121 EH	31149 EH
31310 EH	31351 EH	31321 EH	31349 EH
	CLICK ^{line} Micro Hook Scissors		
31110 DB	31151 DB	31121 DB	31149 DB
31310 DB	31351 DB	31321 DB	31349 DB
	CLICK ^{line} BLAKESLEY Dissecting and Biopsy Forceps		

Knives for Pyloromyotomy



Size 3 mm

Operating instruments, **lengths 10 and 20 cm**,
for use **with trocars size 3.5 mm**



26167 DRS



26167 DRS

Pyloric Knife, with LUER-Lock connector for
cleaning, size 3 mm, length 10 cm
including:

Handle, with outer sheath

Knife Insert, for single use, unsterile,
package of 10

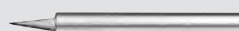


26167 KRS

Knife Insert, unsterile, for single use,
package of 10

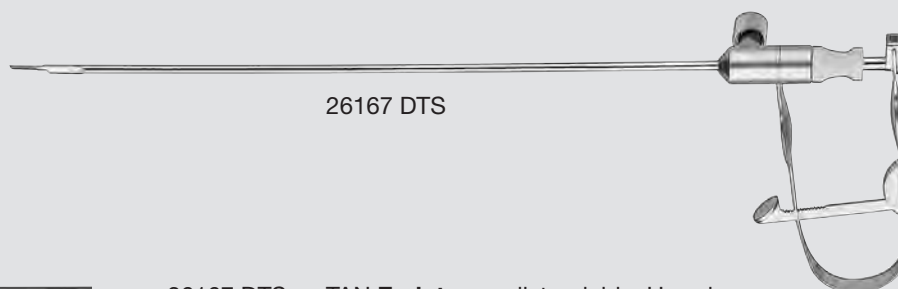


26167 DFS



26167 DFS

ALAIN-GROUSSEAU Pylorotome,
distendable, size 3 mm, length 20 cm



26167 DTS



26167 DTS

TAN Endotome, distendable, U-spring
handle with ratchet, with LUER-Lock
connector for cleaning, size 3 mm,
length 20 cm, including Knife 26167 KTS

Components/Spare Parts see LAPAROSCOPY catalog

Percutaneous Pyloric Spreader, GEIGER Pyloric Grasper

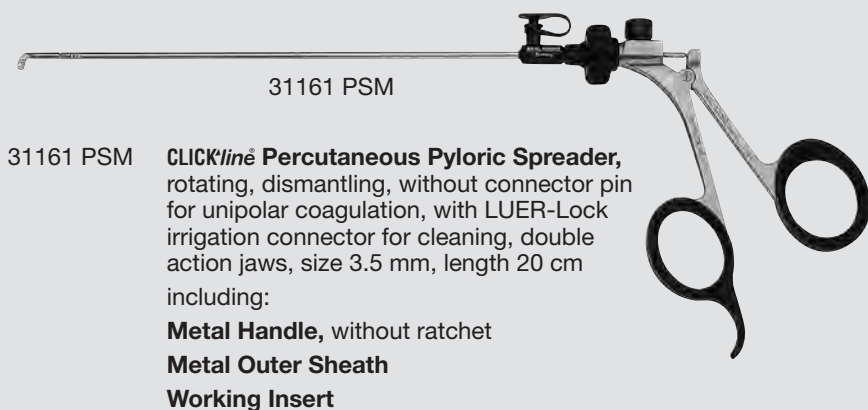
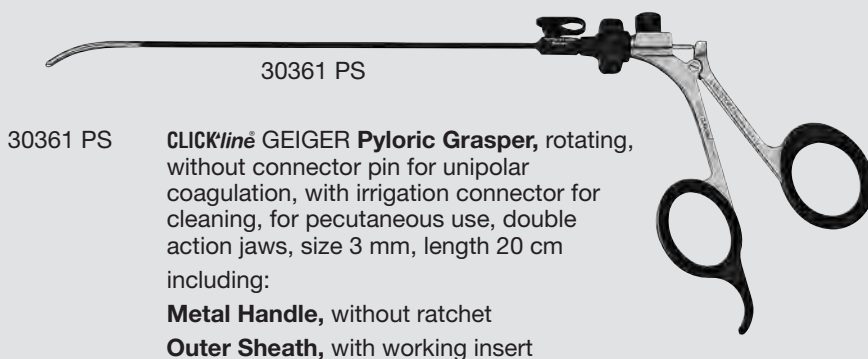
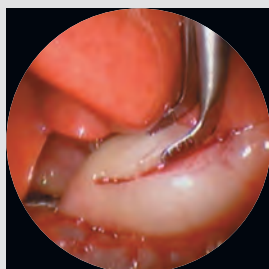
Sizes 3 and 3.5 mm

Operating instruments, length 20 cm



Minimally invasive surgery is constantly being refined due to the development of new techniques and instruments. Weber-Ramstedt pyloromyotomy and the Benson pyloric spreader have already been proven valuable in open surgery. KARL STORZ offers a special percutaneous pyloric spreader for minimal access. The

design of the miniature access percutaneous pyloric spreader is modeled after the Benson spreader. The spreader has the following unique features: It is slim, it has a double action mechanism, its angled jaws are serrated on the outside and inside and it can be used without a trocar.



Components/Spare Parts see LAPAROSCOPY catalog

Coagulation and Dissection Electrodes

without suction channel, insulated sheath,
with connector pin for unipolar coagulation

Size 3.5 mm

Operating instruments, **lengths 20 and 36 cm**,
for use **with trocars size 3.5 mm**



Length	Instrument
20 cm	
36 cm	

Distal Tip	Instrument	
	26870 UNS	Coagulation and Dissection Electrode, L-shaped
	26870 UNL	

Special Features:

- The hook electrode is suitable for resection, insulating structures as well as dissection and coagulation.
- The distal tip is semicircular: The thick outer curvature enables dissection.

Length	Instrument
36 cm	

Distal Tip	Instrument	
	25775 CNL	CADIERE Coagulation and Dissection Electrode, L-shaped, with cm-marking, distal tip tapered

Units for Coagulation and Dissection Electrodes see LAPAROSCOPY catalog

Dissection Electrodes

without suction channel, insulated sheath,
with connector pin for unipolar coagulation

Size 3.5 mm

Operating instruments, **length 36 cm**, for use **with**
trocars size 3.5 mm



26167 NNL



26167 NNL **KOH Ultramicro High Frequency Electrode**,
for splitting and coagulation, insulated,
retractable, with connector pin for unipolar
coagulation, size 3.5 mm, length 36 cm

26167 NNX **Spare Needle Electrode, autoclavable**, size 3.5 mm,
length 36 cm, package of 5, for use with KOH
Ultramicro High Frequency Electrode 26167 NNL

Units for Dissection Electrodes see LAPAROSCOPY catalog

Handles and Outer Sheaths
for Bipolar Forceps

TAKE-APART® – with connector pin for bipolar coagulation



Size 3 mm



TAKE-APART® bipolar instruments, consisting of:

- Handle
- Outer Sheath
- Working Insert

TAKE-APART® Handles

	
26184 HR TAKE-APART® Bipolar Spring Handle	26184 HM TAKE-APART® Bipolar Ring Handle

TAKE-APART® Outer Sheaths



26184 HSS/HS/H

26184 HSS	TAKE APART® Outer Sheath , for bipolar instruments, size 3 mm, length 20 cm
26184 HS	Same , length 30 cm
26184 H	Same , length 36 cm

Bipolar Forceps
TAKE-APART® – with connector pin for bipolar coagulation

Size 3 mm

Operating instruments, lengths 20, 30 and 36 cm,
for use with trocars sizes 3.5 mm



Table with 3 columns: Outer Sheath, Handle (26184 HR, 26184 HM), and rows for Length 20 cm, 30 cm, 36 cm.

Table with 3 columns: Working Insert, Complete Instrument, and rows for 26184 HVS, HV, HVL and their corresponding complete instruments.

Image of bipolar forceps tip + TAKE-APART® Bipolar Coagulation Forceps, width of jaws 1 mm

Table with 3 columns: 26184 PTS, 26184 HPS, 26184 MPS. Below: Image of TAN bipolar forceps tip + TAKE-APART® TAN Bipolar Coagulation Forceps

Table with 3 columns: 26184 HTS, HAS, MAS; 26184 HT, HA, MA; 26184 HTL, HAL, MAL.

Image of bipolar forceps tip + TAKE-APART® Bipolar Coagulation Forceps

Please note:
For TAKE-APART® instruments only the individual component parts are numbered. The catalog number for the complete instrument is not on the instrument. Please take this number from the numbers indicated in the white background. The color green indicates the working inserts.
Bipolar High Frequency Cords see page 44

ROBI® Bipolar Grasping Forceps and Scissors

rotating, dismantling, with connector pin for bipolar coagulation, CLERMONT-FERRAND model



Special Features:

- 360° rotating sheath
- The HF connection is mounted at a 45° angle on the upper side of the handle, thereby guiding the high frequency cable away from the field of operation.
- Instruments in size 3.5 mm can be disassembled into a handle and working insert with outer sheath.
- Color coding on the working insert and handle
- Handle 38151 is compatible with both the 3.5 mm and 5 mm ROBI® systems

ROBI® Handle, insulated, for size 3.5 mm



38151 ROBI® Plastic Handle, without ratchet

Accessories for Handles and Outer Sheaths

	33120 G	Rotating Wheel , for CLICK ^{line} and ROBI® handles, autoclavable , makes rotation of outer sheath more comfortable, package of 5
	29100	Plug , for LUER-Lock irrigation connector for cleaning, black, autoclavable , package of 10
	29100 A	Color-Coded Plug , for LUER-Lock irrigation connector for cleaning, red, green, black, 10 each, package of 30

ROBI® Bipolar Grasping Forceps and Scissors

rotating, dismantling, with connector pin for bipolar coagulation, CLERMONT-FERRAND model

Size 3.5 mm

slimline

RoBi

XS



Operating instruments, lengths 20 and 36 cm, for use with trocars sizes 3.5 and 3.9 mm

Outer Sheath	Handle
	38151
Length 20 cm	
Length 36 cm	

Double action jaws

Outer Sheath with Working Insert	Complete Instrument
38810 ON	38851 ON
38910 ON	38951 ON
 12	ROBI® Grasping Forceps , CLERMONT-FERRAND model, fenestrated, with especially fine atraumatic serration
38810 MD	38851 MD
38910 MD	38951 MD
 12	ROBI® KELLY Grasping Forceps , CLERMONT-FERRAND model, especially suitable for dissection
38810 PT	38851 PT
 16	ROBI® TAN Grasping Forceps , CLERMONT-FERRAND model, especially suitable for dissection
38810 MW	38851 MW
38910 MW	38951 MW
 12	ROBI® METZENBAUM Scissors , CLERMONT-FERRAND model, curved scissor blades

Please note:

For ROBI® instruments only the **individual component parts** are numbered. The catalog number for the **complete instrument** is not on the instrument. Please take this number from the numbers indicated in the **red** background of the table above. The color **green** indicates the working inserts.

Bipolar High Frequency Cords see page 44

Palpation Probes and Retractors

Size 3.5 mm

Operating instruments, **lengths 20 and 36 cm**,
for use **with trocars sizes 3.5 mm**

slimline

XS

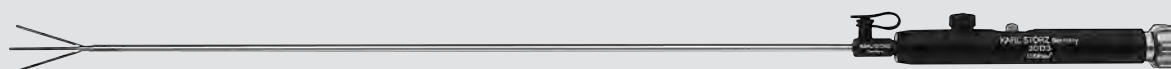


26167 TNS

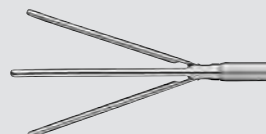


26167 TNS **Palpation Probe**, with cm-marking,
size 3.5 mm, length 20 cm

26167 TNL **Same**, length 36 cm



31143 REM



31143 REM **CLICKline® Palpation Probe**, dismantling,
without connector pin for unipolar
coagulation, with LUER-Lock irrigation
connector for cleaning, retractable, double
action jaws, size 3.5 mm, length 20 cm
including:

Handle

Metal Outer Sheath

Forceps Insert

31343 REM **Same**, length 36 cm

Size 5 mm



30623 NAS **Liver Retractor**, small contact area,
diameter 5 mm

Components/Spare Parts see LAPAROSCOPY catalog

Accessories

Unipolar and Bipolar High Frequency Cords

Unipolar High Frequency Cords



KARL STORZ High Frequency
Instrument Surgery Units

	26002 M	Unipolar High Frequency Cord , with 4 mm plug, length 300 cm, for use with KARL STORZ, Erbe type T older models and Ellman
	26004 M	Unipolar High Frequency Cord , with 4 mm plug, length 300 cm, for use with Martin HF units
	26005 M	Unipolar High Frequency Cord , with 5 mm plug, length 300 cm, for use with AUTOCON® III 300, AUTOCON® III 400, AUTOCON® II 400 SCB system (111, 115, 122, 125), AUTOCON® II 200, AUTOCON® II 80, AUTOCON® system (50, 200, 350), Erbe type ICC and Erbe VIO 300
	26006 M	Unipolar High Frequency Cord , with 8 mm plug, length 300 cm, for use with AUTOCON® III 300, AUTOCON® III 400, AUTOCON® II 400 SCB system (112, 116) and Valleylab models

Bipolar High Frequency Cords



KARL STORZ High Frequency
Instrument Surgery Units

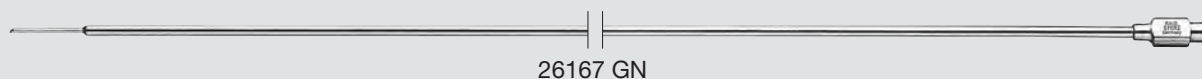
	26176 LE	Bipolar High Frequency Cord , length 300 cm, for use with AUTOCON® III 300, AUTOCON® III 400, AUTOCON® II 400 SCB system (111, 113, 115, 122, 125), AUTOCON® II 200, AUTOCON® II 80, Coagulator 26021 B/C/D, 860021 B/C/D, 27810 B/C/D, 28810 B/C/D, AUTOCON® series (50, 200, 350), Erbe-Coagulator, T and ICC series
	26176 LM	Bipolar High Frequency Cord , length 300 cm, for use with Martin HF units
	26176 LV	Bipolar High Frequency Cord , length 300 cm, for use with AUTOCON® III 300, AUTOCON® III 400, AUTOCON® II 400 SCB system (112, 114, 116, 122, 125), AUTOCON® II 200, AUTOCON® II 80 and Valleylab coagulators, for use with high frequency surgical units with bipolar sockets with 28.58 mm pin distance
	26176 LW	Bipolar High Frequency Cord , length 300 cm, pin distance on unit side 22 mm, for use with high frequency surgical units with bipolar sockets with 22 mm pin distance

Please note: All high frequency cords of this page are delivered with a length of 300 cm. If a length of 500 cm is requested please add letter **L** to the part number, e. g. 26002 **ML**, 26176 **LVL**.

Needles, Injection Cannula

Size 3.5 mm

Operating instruments, **length 30 cm**,
for use **with trocars size 3.5 mm**

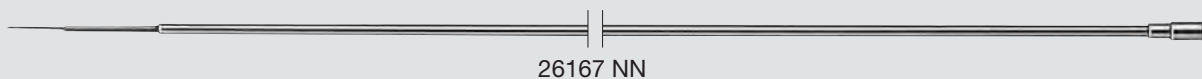


26167 GN



26167 GN

MENGHINI Liver Biopsy Needle, LUER-Lock,
size 3.5 mm, needle diameter 1.6 mm, length 30 cm



26167 NN



26167 NN

KOH Ultramicro Injection Cannula,
size 3.5 mm, length 30 cm

Pediatric Inguinal Herniotomy



26167 HH



26167 HH

YEUNG Hook Needle

Needle Holders



Size 2 mm

Operating instruments, **length 20 cm**,
for use **with trocars sizes 2.5 mm**

Length	Instrument	
20 cm		
Distal End	Instrument	
	30200 FNS	KOH Ultramicro Needle Holder , straight handle, with disengageable ratchet

Size 3.5 mm

Operating instruments, **lengths 20 and 36 cm**,
for use **with trocars size 3.5 mm**

Length	Instrument	
20 cm		
36 cm		
Distal Tip	Instrument	
	26167 LNS	KOH Ultramicro Needle Holder , jaws curved to left, with tungsten carbide inserts, straight handle, with disengageable ratchet
	26167 LNL	
	26167 RNS	KOH Ultramicro Needle Holder , jaws curved to right, with tungsten carbide inserts, straight handle, with disengageable ratchet
	26167 RNL	

	26167 SNL	
	26167 SNL	
	26167 MNS	
		SAWALHE Needle Holder , 90° opening jaws, axial ring handle with ratchet, size 3.5 mm, length 36 cm
		LIMA Needle Holder , jaws curved to left, axial ring handle with ratchet, size 3.5 mm, length 20 cm

Knot Tiers

Size 3.5 mm

slimline

XS

Operating instruments, **lengths 20 and 36 cm**,
for use **with trocars size 3.5 mm**



26167 KNL



26167 KNS

Knot Tier, for extracorporeal knotting, size 3.5 mm,
length 20 cm

26167 KNL

Same, length 36 cm

Special Features:

- Open and closed end within one instrument.
By turning the instrument around, the surgeon
can use the form of the instrument which is best
suited for each ligature, without having to
request an exchange of instruments
- Small cross-section distal end



26167 DNL



26167 DNS

Knot Tier, for extracorporeal knotting, size 3.5 mm,
length 20 cm



26167 DNL

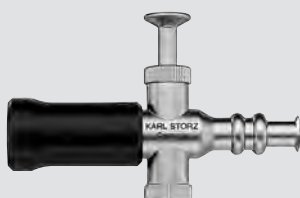
Same, length 36 cm

Handles for Suction and Irrigation

Handles	Function	Compatibility Matrix			
		Suction and Irrigation Tubes, size 3.5 mm	Suction and Irrigation Tubes, size 5 mm	Suction and Irrigation Tubes, size 10 mm	for use with mtp tubing sets only
 30804	for suction or irrigation	●	●	—	—
 30805	for suction and irrigation	●	●	—	—
 30810	for suction and irrigation	●	●	—	—
 37112 A	for suction and irrigation	●	●	●	
 37113 A	for suction and irrigation, with central working channel	●	●	●	
 38112 CS	for suction and irrigation	●	●	●	

Please note:
Detailed descriptions of the Handles see pages 49-50
5 mm and 10 mm Suction and Irrigation Tubes see LAPAROSCOPY catalog

Handles for Suction and Irrigation



30804

Handle with Trumpet Valve, for suction or irrigation, **autoclavable**, for use with 5 mm coagulation suction tubes as well as 3 and 5 mm suction and irrigation tubes



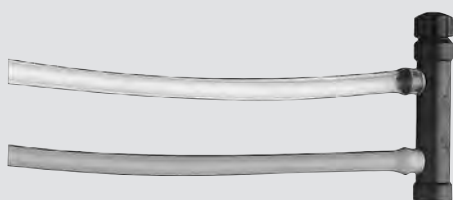
30805

Handle with Two-Way Stopcock, for suction and irrigation, **autoclavable**, for use with suction and irrigation tubes size 5 mm



30810

Handle, for suction and irrigation, **autoclavable**, for use with 5 mm coagulation suction tubes as well as 3 and 5 mm suction and irrigation tubes



30811

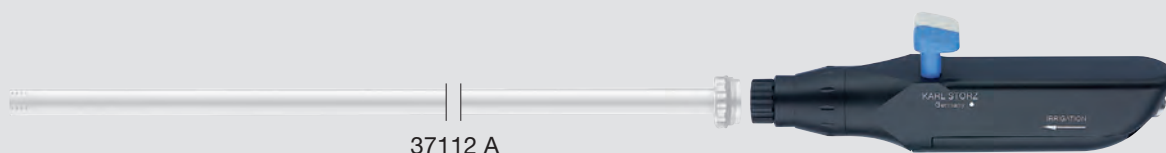
Silicone Tubing Set, autoclavable, for use with Handle 30810

STERILE

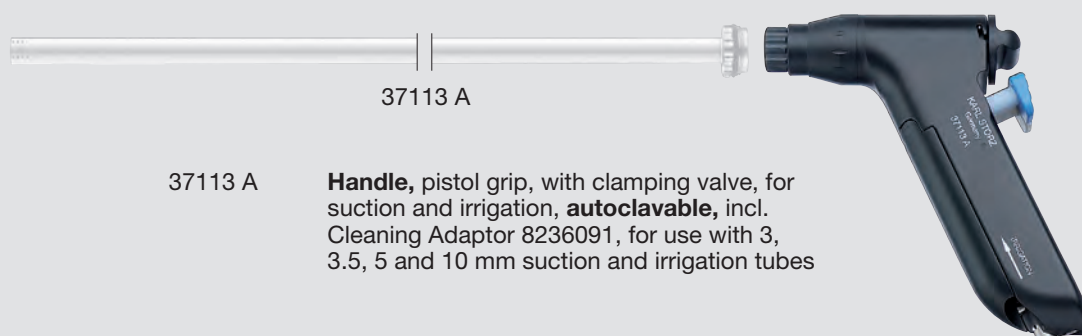
031132-10*

Tubing Set, sterile, for single use, package of 10, for use with Handle 30810

Handles for Suction and Irrigation



37112 A **Handle**, straight, with clamping valve, for suction and irrigation, **autoclavable**, incl. Cleaning Adaptor 8236091, for use with 3, 3.5, 5, and 10 mm suction and irrigation tubes



37113 A **Handle**, pistol grip, with clamping valve, for suction and irrigation, **autoclavable**, incl. Cleaning Adaptor 8236091, for use with 3, 3.5, 5 and 10 mm suction and irrigation tubes

Note:

Handles 37112 A and 37113 A can be used with sterile tubing sets, see page 51

Units for use with Handles for Suction and Irrigation see LAPAROSCOPY catalog

Tubing Sets

for use with Handles 37112 A and 37113 A

STERILE 



031133-10

031133-10* **Tubing Set**, sterile, for single use, package of 10, for use with Handles 37112 A, straight, and 37113 A, pistol grip



031524-10

031524-10* **Tubing Set for Irrigation, FC**, sterile, for single use, package of 10, for use with HAMOU® ENDOMAT® SCB 26 3311 20-1 and ENDOMAT® SELECT

Note: Tubing Set 031134-10 is required when using Handles 37112 A and 37113 A in conjunction with Cassette Tubing Set 031524-10.



031134-10

031134-10* **Tubing Set**, sterile, for single use, package of 10, for use with Handles 37112 A, straight, and 37113 A, pistol grip, in combination with silicone tube inner diameter 5 mm at the patient end



031219-10

031219-10* **Complete Tubing Set**, with two puncture cannulas, sterile, for single use, package of 10, for use with Handles 37112 A, straight, and 37113 A, pistol grip, in combination with ENDOMAT® LC SCB



Suction and Irrigation Tubes

slimline

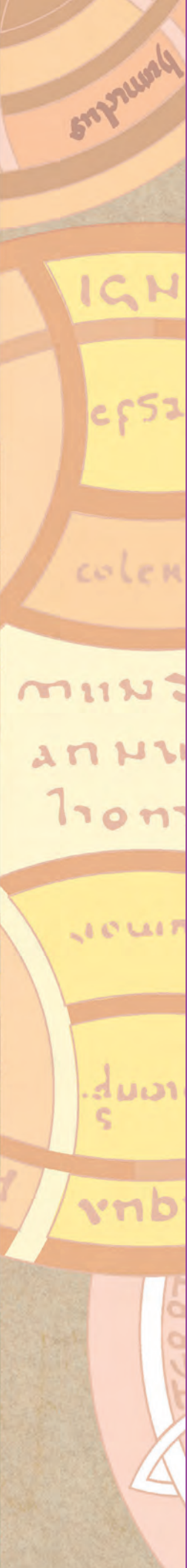


Size 3.5 mm

Operating instruments, lengths 20 and 36 cm,
for use with trocars size 3.5 mm

Length	Instrument
20 cm	
36 cm	

Distal Tip	Instrument	
	26167 ANS	Suction and Irrigation Tube , with lateral holes, for use with handles for irrigation and suction
	26167 ANL	



BASIC SETS

Units for Laparoscopic Surgery, Pediatric Surgery, Gynecology and Urology

Basic Set



2-151

Units for Laparoscopic Surgery, Pediatric Surgery, Gynecology and Urology

Basic Set

Monitor:

TM 350 **32" 4K/3D Monitor**

Optional:

TM 342 **31" 4K Monitor**

TM 450 **55" 4K/3D Monitor**

TM 009 **Signal Converter Set 12G-SDI, 4 x 3G-SDI**

Camera System:

TC 201EN** **IMAGE1 S CONNECT® II, 4K technology, basic module**

TC 304 **IMAGE1 S™ 4U-LINK, module for rigid endoscopy, 4K technology**

TH 121 **IMAGE1 S™ 4U RUBINA™, OPAL1® NIR/ICG, two-chip 4K UHD camera head**

Optional:

TH 100 **IMAGE1 S™ H3-Z Three-Chip FULL HD Camera Head**

TC 200EN** **IMAGE1 S CONNECT®, basic module**

TC 300 **IMAGE1 S™ H3-LINK, module for rigid endoscopy, FULL HD**

TC 301 **IMAGE1 S™ X-LINK, module for flexible and rigid endoscopy**

TH 120 **IMAGE1 S™ 4U One-Chip 4K UHD Camera Head**

11292 VSK **Flexible Video Choledochoscope IMAGE1 S™**

Light Source:

TL 400 **Cold Light Fountain POWER LED RUBINA™, OPAL1® NIR/ICG**

495 NCSC **Fiber Optic Light Cable, with safety lock**

Optional:

TL 300 **Cold Light Fountain POWER LED 300 SCB**

UF 101 **One-Pedal-Footswitch, one-stage**

Pump System:

UP 210 **ENDOMAT® SELECT, suction or irrigation pump**

UP 601 **SURGERY Software, license**

031524-10* **Tubing Set**

Optional:

20 0141 30 **One-Pedal Footswitch**

Insufflation:

UI 500S1 **ENDOFLATOR® 50 SCB**

031210-10* **Insufflation Tubing Set with Gas Filter, heatable**

UP 501S1 **S-PILOT®, for smoke evacuation**

031447-10* **Tubing Set**

031111-10* **Smoke Evacuation Filter**

Documentation:

WD 350-EN*** **AIDA® with SMARTSCREEN®**

TC 009 **USB Adaptor, for ACC 1 and ACC 2**

TC 010 **Two-Pedal Footswitch USB, as of software version 6.1.1**

HF Unit:

UH 400 **AUTOCON® III 400 High-End**

27805 **Neutral Electrode**

27806 UR **Neutral Electrode Connecting Cable**

UF 902 **Two-Pedal HF Footswitch**

Equipment Cart:

UG 220 **Equipment Cart, wide**

UG 500 **Monitor Holder**

UG 501 **Monitor Holder Adaptor**

UG 520 **Monitor Holding Arm**

UG 609 **Bottle Holder, for CO₂ bottles**

UG 902 **Footswitch Holder, for two-pedal HF footswitch**

UG 310 **Isolation Transformer**

UG 410 **Earth Leakage Monitor**



** Also available in the following languages: DE, ES, FR, IT, PT, RU, SE

*** Also available in the following languages: DE, ES, FR, IT, PT, RU

3D Camera Platform see TELEPRESENCE and LAPAROSCOPY catalogs

Units see LAPAROSCOPY catalog

FULL HD Camera Platforms see TELEPRESENCE catalog

Basic Set

26011 AA	HOPKINS® Straight Forward Telescope 0° , enlarged view, diameter 5 mm, length 24 cm, autoclavable , fiber optic light transmission incorporated, color code: green
or	
26007 AA	HOPKINS® Straight Forward Telescope 0° , enlarged view, diameter 3.3 mm, length 25 cm, autoclavable , fiber optic light transmission incorporated, color code: green
495 NAC	Fiber Optic Light Cable , with straight connector, extremely heat-resistant, with safety lock, enhanced light transmission, diameter 3.5 mm, length 230 cm
26120 J	VERESS Pneumoperitoneum Needle , with spring-loaded blunt inner cannula, LUER-Lock, autoclavable , diameter 2.1 mm, length 10 cm
30160 GYS	Trocar , with conical tip, with LUER-Lock connector and valve seal, size 6 mm, working length 5 cm, color code: black
4x 30114 GZS	Trocar , with pyramidal tip, with LUER-Lock connector and valve seal, size 3.5 mm, working length 5 cm, color code: green
31151 MW	CLICK'liné Scissors , rotating, dismantling, double action jaws, serrated, curved, conical, without ratchet, with connector pin for unipolar coagulation, size 3.5 mm, length 20 cm
2x 31151 UL	CLICK'liné REDDICK-OLSEN Dissecting and Grasping Forceps , rotating, dismantling, double action jaws, robust, without ratchet, with connector pin for unipolar coagulation, size 3.5 mm, length 20 cm
31153 ON	CLICK'liné Grasping Forceps , rotating, dismantling, single action jaws, with especially fine atraumatic serration, fenestrated, with hemostat style ratchet, with connector pin for unipolar coagulation, size 3.5 mm, length 20 cm
31151 EH	CLICK'liné Micro Hook Scissors , rotating, dismantling, single action jaws, without ratchet, with connector pin for unipolar coagulation, size 3.5 mm, length 20 cm
31151 MD	CLICK'liné KELLY Dissecting and Grasping Forceps , rotating, dismantling, double action jaws, without ratchet, with connector pin for unipolar coagulation, size 3.5 mm, length 20 cm
26870 UNS	Coagulation and Dissection Electrode , L-shaped, insulated, with connector pin for unipolar coagulation, size 3.5 mm, length 20 cm
26005 M	Unipolar High Frequency Cord , with 5 mm plug for AUTOCON®, length 300 cm
38851 MD	ROBI® KELLY Grasping Forceps , CLERMONT-FERRAND model, rotating, dismantling, with connector pin for bipolar coagulation, size 3.5 mm, length 20 cm
38851 ON	ROBI® Grasping Forceps , CLERMONT-FERRAND model, rotating, dismantling, with especially fine atraumatic serration, fenestrated jaws, with connector pin for bipolar coagulation, size 3.5 mm, length 20 cm
38851 MW	ROBI® Scissors , CLERMONT-FERRAND model, rotating, dismantling, curved blades, with connector pin for bipolar coagulation, size 3.5 mm, length 20 cm
26176 LE	Bipolar High Frequency Cord , length 300 cm
26167 ANS	Suction and Irrigation Tube , with lateral holes, size 3.5 mm, length 20 cm, for use with handles for irrigation and suction
30805	Handle with Two-Way Stopcock , for suction and irrigation, autoclavable , for use with suction and irrigation tubes size 5 mm
31143 REM	CLICK'liné Palpation Probe , retractable, size 3.5 mm, length 20 cm
26167 LNS	KOH Ultramicro Needle Holder , with tungsten carbide inserts, jaws curved to left, straight handle, with disengageable ratchet, size 3.5 mm, length 20 cm
26167 RNS	KOH Ultramicro Needle Holder , with tungsten carbide inserts, jaws curved to right, straight handle, with disengageable ratchet, size 3.5 mm, length 20 cm

Supplementary Set for Pyloric Stenosis

26167 DRS	Pyloric Knife , size 3 mm, length 10 cm
31161 PSM	CLICK'liné Percutaneous Pyloric Spreader , rotating, dismantling, size 3.5 mm, length 20 cm
30361 PS	CLICK'liné GEIGER Pyloric Grasper , rotating, for percutaneous use, size 3 mm, length 20 cm

Optional Instruments, size 2 mm

30251 MSS	CLICK'liné METZENBAUM Scissors , rotating, double action jaws, curved, size 2 mm, length 20 cm
30251 KJS	CLICK'liné REDDICK-OLSEN Dissecting and Grasping Forceps , rotating, double action jaws, size 2 mm, length 20 cm
30200 FNS	KOH Ultramicro Needle Holder , straight handle, with ratchet, size 2 mm, length 20 cm

Containers for the Sterilization and Storage of Telescopes see HYGIENE catalog



Important Notes:

It is recommended to check the suitability of the product for the intended procedure prior to use.

Endoscopes and accessories contained in this catalog have been designed in part with the cooperation of physicians and are manufactured by the KARL STORZ group. If subcontractors are hired to manufacture individual components, these are made according to proprietary KARL STORZ plans or drawings. Furthermore, these products are subject to strict quality and control guidelines of the KARL STORZ group. Both contractual and general legal provisions prohibit subcontractors from supplying components manufactured by order of KARL STORZ to competitors.

Any assumptions that competitors' endoscopes and accessories are acquired from the same suppliers as the KARL STORZ products are not correct. Moreover, endoscopes and instruments provided by competitors are not manufactured according to the design specifications of KARL STORZ. This means it cannot be assumed that these endoscopes and accessories – even if they look identical on the outside – are constructed in the same manner and have been tested according to the same criteria.

Standardized Design and Labeling

KARL STORZ participates both in national and international bodies involved in the development of standards for endoscopes and endoscopic accessories. Standardized design and development therefore have long been implemented consistently by KARL STORZ. The user can rest assured that all products by the KARL STORZ group have been designed and constructed not only in compliance with strict internal quality guidelines, but also with international standards. All data relevant for safe use, such as viewing direction, sizes and diameters, or notes regarding sterilization of telescopes, are applied to the instruments, have been formulated according to international standards, and therefore provide reliable information.

As we constantly seek to improve and modify our products, we reserve the right to make changes in design that vary from catalog descriptions.

Original or Counterfeit

KARL STORZ products are name brand articles renowned around the world and represent the state of the art in important areas of healthcare. A large number of “copy cat” products are currently being offered in many markets. These products are designed intentionally to resemble KARL STORZ products and use marketing strategies that at least point out their compatibility with KARL STORZ products. These products are by no means genuine products, since genuine KARL STORZ products are sold worldwide exclusively under the name of KARL STORZ, which appears on the packaging and the product. In the absence of such labeling, the product is not from KARL STORZ.

KARL STORZ, therefore, is unable to ensure that such products are actually compatible with genuine KARL STORZ products or can be used with them without injury to the patient.



Information on events is available on the KARL STORZ website
www.karlstorz.com



KARL STORZ SE & Co. KG
Dr.-Karl-Storz-Str. 34, 78532 Tuttlingen/Germany
Postfach 230, 78503 Tuttlingen/Germany
Phone: +49 7461 708-0, Fax: +49 7461 708-105
E-Mail: info@karlstorz.com

www.karlstorz.com



96111001E