



Nothing but **HEAVY DUTY.**



**NEW**

# M18™ FORCE LOGIC™ JAW EXPANSION

## 750 MCM Cu / Al Crimping Jaw



# M18™ FORCE LOGIC™ JAW EXPANSION

What's Launching

## Tool Kits

**M18™ FORCE LOGIC™ 600 MCM Cu  
Crimper Kit w/ 750 MCM Expanded Jaw**  
2679-750C



**M18™ FORCE LOGIC™ 600 MCM Al  
Crimper Kit w/ 750 MCM Expanded Jaw**  
2679-750A



## Accessory Kits

**750 MCM Cu/Al Crimping Jaw w/ 750 MCM  
Cu 6T U Style Die**  
49-16-750C



**750 MCM Cu/Al Crimping Jaw w/ 750 MCM  
Al 6T U Style Die**  
49-16-750A



## Individual Accessories

**750 MCM Cu/Al Crimping Jaw**  
49-16-U111



**Individual U Style Dies**  
750 MCM Cu  
400 – 750 MCM Al





# 750 MCM CU / AL CRIMPING JAW

## One-Slider

Pre-Order Date: **Open for Pre-Orders**

Launch Ship Date: **1/15/19**

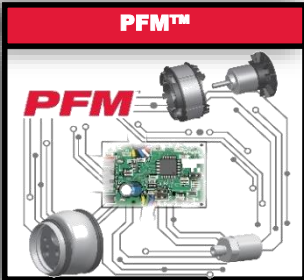
### Compatibility



### In-line Design



### PFM™



## ■ Versatility

- Compatible with M18™ FORCE LOGIC™ 600 MCM Crimper
- UL Classification Across All Major Connector Brands
- Easily Interchangeable with 600 MCM Crimping Jaw & 750 MCM Cutting Jaw

## ■ Best Crimp-to-Size Ratio

- Lightest In-line Design with 750 MCM Cu / Al Crimp Capacity
- Fully Balanced for Reduced Fatigue
- Operates Easily in Crowded Panels

## ■ Crimp Confidence

- Proprietary Jaw Alignment System for Easier Alignment
- Predictive Force Monitoring™ (PFM™) with Instant Pressure Verification
- ONE KEY™ Enabled and Wireless Reporting



\*For use with 2679-20





# 750 MCM CU / AL CRIMPING JAW

## Tool Kit Contents



### 2679-750C Kit Contents:

- M18™ FORCE LOGIC™ 600 MCM Crimper (2679-20)
- 750 MCM Cu/Al Crimping Jaw (49-16-U111)
- 750 MCM Cu U Style Die (49-16-U750C)
- 600 MCM Cu U Style Die (49-16-U600C)
- 500 MCM Cu U Style Die (49-16-U500C)
- 400 MCM Cu U Style Die (49-16-U400C)
- 350 MCM Cu U Style Die (49-16-U350C)
- 300 MCM Cu U Style Die (49-16-U300C)
- 250 MCM Cu U Style Die (49-16-U250C)
- 4/0 Cu U Style Die (49-16-U04AC)
- 3/0 Cu U Style Die (49-16-U03AC)
- 2/0 Cu U Style Die (49-16-U02AC)
- 1/0 Cu U Style Die (49-16-U01AC)
- #1 Cu U Style Die (49-16-U001C)
- #2 Cu U Style Die (49-16-U002C)
- #4 Cu U Style Die (49-16-U004C)
- #6 Cu U Style Die (49-16-U006C)
- #8 Cu U Style Die (49-16-U008C)
- (2) 48-11-1820 M18™ REDLITHIUM™ CP2.0 Battery Pack
- 48-59-1812 M18™ & M12™ Multi-Voltage Charger
- Carrying Case



### 2679-750A Kit Contents:

- M18™ FORCE LOGIC™ 600 MCM Crimper (2679-20)
- 750 MCM Cu/Al Crimping Jaw (49-16-U111)
- 750 MCM Al U Style Die (49-16-U750)
- 600 MCM Al U Style Die (49-16-U600)
- 500 MCM Al U Style Die (49-16-U500)
- 400 MCM Al U Style Die (49-16-U400)
- 350 MCM Al U Style Die (49-16-U350)
- 300 MCM Al U Style Die (49-16-U300)
- 250 MCM Al U Style Die (49-16-U250)
- 4/0 Al U Style Die (49-16-U04A)
- 3/0 Al U Style Die (49-16-U03A)
- 2/0 Al U Style Die (49-16-U02A)
- 1/0 Al U Style Die (49-16-U01A)
- #1 Al U Style Die (49-16-U001)
- #2 Al U Style Die (49-16-U002)
- #4 Al U Style Die (49-16-U004)
- #6 Al U Style Die (49-16-U006)
- #8 Al U Style Die (49-16-U008)
- (2) 48-11-1820 M18™ REDLITHIUM™ CP2.0 Battery Pack
- 48-59-1812 M18™ & M12™ Multi-Voltage Charger
- Carrying Case





# 750 MCM CU / AL CRIMPING JAW

## Accessory Kit Contents



### 49-16-750C Kit Contents:

- 750 MCM Cu/Al Crimping Jaw (49-16-U111)
- 750 MCM Cu U Style Die (49-16-U750C)
- Carrying Case

\*Jaw & All Dies Are Also Available for Individual Purchase



### 49-16-750A Kit Contents:

- 750 MCM Cu/Al Crimping Jaw (49-16-U111)
- 750 MCM Al U Style Die (49-16-U750)
- 600 MCM Al U Style Die (49-16-U600)
- 500 MCM Al U Style Die (49-16-U500)
- 400 MCM Al U Style Die (49-16-U400)
- Carrying Case

\*Jaw & All Dies Are Also Available for Individual Purchase



# 750 MCM CU / AL CRIMPING JAW

## What is a Crimper?

- **Why Do Users Crimp?**
  - Crimpers Produce an Irreversible Electrical Connection.
- **How Does a Crimper Work?**
  - Crimpers Compress Wire and a Connector Together to Form a Single Mass that Conducts Electricity.

## Crimping Applications

### SPLICING

Connecting Two Wires with a Splice to Continue a Run of Wire



### TERMINATING

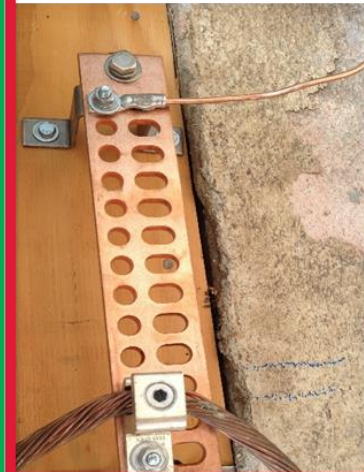
Connecting a Wire to a Lug to Land Power to Equipment



Most Common (75%)

### GROUNDING

Connecting a Copper Wire to a Grounding Connector



## This Launch Targets Splices & Terminations Only



# M18™ FORCE LOGIC™ JAW EXPANSION

Target User



M18™ FORCE LOGIC™ 600 MCM Cu/Al Crimper  
2679-20



600 MCM Cu/Al Crimping Jaw  
49-16-U000



750 MCM Cu/Al Crimping Jaw  
49-16-U111



750 MCM Cu/Al Cutting Jaw  
49-16-2780



This Launch Targets the Commercial Electrician





# 750 MCM CU / AL CRIMPING JAW

Applications



**Switch Gear**



**Transformers**



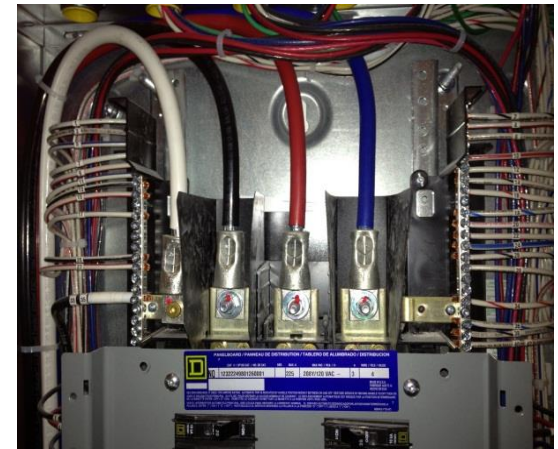
**Bus Bar**



**Junction / Pull Boxes**



**Back-up Generators /  
UPS System**  
(Uninterruptible Power Supply)



**Panels**





# 750 MCM CU / AL CRIMPING JAW

2679-20 Capacity

750 MCM: Feeders for Data Centers

500 MCM: Feeders for large Buildings

400 MCM: 400 amp Service Houses 6,000 sq.ft.+

4/0: Ground for 500 Feeders

3/0: 200 amp Service Most Houses With Central Air

1/0: 150 amp Service

#3: 100 amp Service Older Homes

#8: Cook Top



750 MCM  
15%

400 – 600 MCM  
50%

2/0 – 350 MCM  
30%

#8 – 1/0  
5%

**NEW Cu & Al Crimp Capacity**  
#8 – 750 MCM

**Previous Cu Max Crimp Capacity**  
#8 – 600 MCM



**Previous Al Max Crimp Capacity**  
#8 – 350 MCM

## Expanded Capabilities for Crimping & Cutting 750 MCM



# 750 MCM CU / AL CRIMPING JAW

Positioning 6T vs. 12T

	2679	2779
6T vs. 12T User Needs		
Crimps Mostly 600 MCM Cables or Smaller	✓	✗
Ability to Cut with the Same Tool	✓	✗
Already Owns the M18™ 600 MCM Crimper 2679-22	✓	✗
Wants a Lighter Weight and/or More Compact Tool	✓	✗
Crimps 750 MCM Cable Regularly	✗	✓
Ability to Crimp Grounding Connectors	✗	✓
Prefers Traditional Pistol Grip Design	✗	✓

**Qualify the User to Recommend the Correct Solution**



# 750 MCM CU / AL CRIMPING JAW

## The FORCE LOGIC™ Process

### What is FORCE LOGIC™?

FORCE LOGIC™ is engineered to not only improve upon, but fundamentally change the way high-force tools are used in the field. Through thoughtful design focused on workflow, each tool simplifies a complicated process and always delivers **The Smartest Way to Work**.

### The Crimping Process:

#### ALIGN



#### CRIMP



#### REPEAT







# 750 MCM CU / AL CRIMPING JAW

User Needs – Compatibility

COMPATIBILITY

CRIMP  
CAPACITY

CRIMP QUALITY

EASE OF USE

Electricians will enhance their productivity by having a single tool that can cut and crimp the cables that are installing everyday.



***The 750 MCM Cu / Al Crimping Jaw is Compatible with  
2679-20***



# 750 MCM CU / AL CRIMPING JAW

User Needs – Crimp Capacity

COMPATIBILITY

**CRIMP  
CAPACITY**

CRIMP QUALITY

EASE OF USE

Electricians qualify crimpers based on the largest cable size that the tool can crimp.



✓ **Most Balanced**

✓ **One-handed Operation**

✓ **Lightest**

✓ **In-line Design**

***Milwaukee is the ONLY 6 Ton Tool That Can Crimp 750 MCM Cable***



# 750 MCM CU / AL CRIMPING JAW

User Needs – Crimp Quality

COMPATIBILITY

CRIMP  
CAPACITY

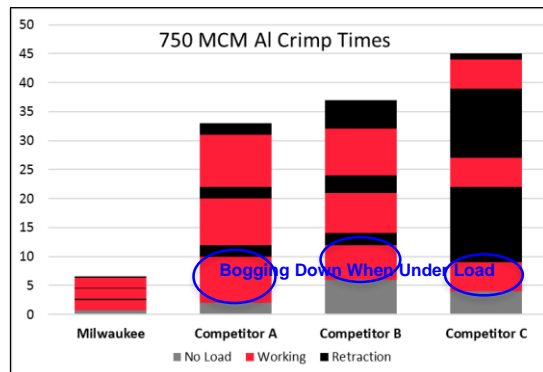
CRIMP QUALITY

EASE OF USE

Electricians need to know that their tool has reached full pressure to ensure that an electrical connection has been made.

## Problem

Competitive tools do not have the intelligence to monitor pressure, which leads to variations in crimp force, bogging down, and no reassurance that the correct pressure was achieved.



## Solution



### Predictive Force Monitoring

- Ensures full pressure by constantly monitoring & storing force output

### Instant Pressure Verification

- Green LED Indicator

### UL Classified

- Milwaukee Crimper & Dies produce UL classified connections across all major connector brands

### Pre-Crimp Battery Check

- Tool will not start a crimp if it cannot complete it

### Auto-Complete

- Tool ensures crimp completion

**Milwaukee Crimpers Deliver Best-In-Class Crimp Quality**





# 750 MCM CU / AL CRIMPING JAW

User Needs – Ease of Use

COMPATIBILITY

CRIMP  
CAPACITY

CRIMP QUALITY

EASE OF USE

**Producing a secure crimp requires users to repetitively hit their mark moving down the connector.**

## Problem

- Competitive designs are slow to reset and align to move down the connector
- Often requires two people: one to align, one to operate tool
- Pistol grip tools are difficult to get into tight panels or switch gears



## Solution

- Balanced tool improves reset and alignment over multiple crimps
- Jaw holds the connector for instant alignment and increased accuracy
- In-line design provides access to tight spaces



***The 2679-20 Is The Easiest Way to Crimp Splices & Lugs***



# M18™ FORCE LOGIC™ JAW EXPANSION

Summary of Benefits

## The Complete 750 MCM Cutting & Crimping Solution





# 750 MCM CU / AL CRIMPING JAW

## Jaw Walk-Around

### Clear Blade Markings

For Easy Identification

### Easy Die Removal

Accepts Milwaukee U Style Dies

### Proprietary Jaw Design

Instant Alignment on Connector

### Easy Open Jaws

Open Jaws with One Hand

### Clear Jaw Markings

For Easy Identification







# 750 MCM CU / AL CRIMPING JAW

## FAQ's

**Q: Can the 750 MCM Cu/Al Crimping Jaw crimp everything that the M18™ FORCE LOGIC™ 750 MCM Crimper (2779-20) can?**

**A: No. The 750 MCM Cu/Al Crimping Jaw can only crimp splices and lugs (see slide 3).**

**Q: Which dies can be used with the 750 MCM Cu/Al Crimping Jaw?**

**A: The expanded crimping jaw works with Milwaukee 400 – 750 MCM Aluminum and 750 MCM Copper U style dies (UL Classification is listed in tool cases, die cases, and manuals). Competitive dies, Milwaukee 6T (#8 – 600 MCM Cu and #8 – 350 MCM Al), and Milwaukee 12T dies cannot be used with this jaw.**

**Q: Which tool is compatible with the 750 MCM Cu/Al Crimping Jaw?**

**A: The 750 MCM Cu/Al Crimping Jaw works with the M18™ Force Logic™ 600 MCM Crimper (2679-20) only.**

**Q: Does the jaw come in a kit version with the tool?**

**A: Yes, the 750 MCM Cu/Al Crimping Jaw is sold in the M18™ FORCE LOGIC™ 600 MCM Cu & Al Crimper Kits w/ 750 MCM Expanded Jaw (2679-750C and 2679-750A).**

**Q: Do any of the kits include storage for cutting and both crimping jaws that are compatible with the 2679-20?**

**A: Yes, the M18™ FORCE LOGIC™ 600 MCM Cu & Al Crimper Kits w/ 750 MCM Expanded Jaw (2679-750C and 2679-750A) fit the 2 crimping jaws and include a slot for the cutting jaw.**

**Q: Why are there 2 tool kits and 2 accessory kits?**

**A: We offer Copper and Aluminum specific tool and accessory kits. The Cu kits only include Cu U style dies and the Al kits only include the Al U style dies.**

**Q: Why is a service clevis pin upgrade kit included with the jaw?**

**A: With the jaw expansion, users are constantly swapping out jaws on the same tool. The new clevis pin aids frequent jaw changes.**

**Q: Is there a warranty on the jaw or dies?**

**A: Jaws and dies are considered accessories and do not carry a warranty.**



# 750 MCM CU / AL CRIMPING JAW


## UL Recognition Standards


- **What is UL?**
  - Underwriters Laboratories (UL) is a third party entity that specializes in safety consulting and safety-related testing and certification in the manufacturing, retail and service industries.
- **Why is UL important in the Electrical Industry as it relates to Crimping?**
  - UL tests and certifies electrical connections to common standards of safety and reliability across multiple manufacturers and multiple combinations of installation. The electrical connection standards are UL 486A and UL 486B.
  - UL has two types of recognitions for these standards: UL Listed and UL Classified.
- **Is there a difference in testing standards between Listed and Classified?**
  - No. UL only has one set of standards for electrical connections and all electrical connections that are recognized by UL, meet these standards.
- **What is the difference between UL Listed and UL Classified?**
  - UL Listing is only for connector manufacturers and consist of a single branded installation system. (Exp: T&B Crimper, T&B Die & T&B Connector)
  - UL Classification is given to non-connector manufacturers whose tools meet UL's Installation Standards. (Exp: Milwaukee Crimper, Milwaukee Die & Range of Connectors)
  - **Because of this, a UL Classified Tool can install a broader range of connectors than a UL Listed tool and at the same standard.**



# 750 MCM CU / AL CRIMPING JAW

## UL Matrix

		Dual Rated Lugs and Splices							
		Anderson	Blackburn®	Bumdy	ILSCO	Panduit	Penn-Union	T&B	
Splice Model #'s		VACS	ASP	YS-A	AS, ASN	SA	BCUA	60501-60578	
Lug Model #'s		VACL	ATL	YA-A, YA-ATN	ACL, ACN, ALND, ALNS, 2ACL, 2ACN	LAA, LAB	BLUA	60101-60178, 60230-60278	
Wire size	Color Code	Milwaukee Die Part Number	Die Indentation Mark	Lugs: Total # of Crimps		Splices: Total # of Crimps per Side			
				Anderson	Blackburn®	Bumdy	ILSCO	Panduit	Penn-Union
#8 AWG	BLUE	49-16-U008	8	Lugs: N/A Splices: 2	Lugs: 2 Splices: N/A	2		Lugs: 2 Splices: N/A	2
#6 AWG	GREY	49-16-U006	6						
#4 AWG	GREEN	49-16-U004	4						
#2 AWG	PINK	49-16-U002	2						
#1 AWG	GOLD	49-16-U001	1	2	2			2	
1/0 AWG	TAN	49-16-U01A	1/0						
2/0 AWG	OLIVE	49-16-U02A	2/0						
3/0 AWG	RUBY	49-16-U03A	3/0						
4/0 AWG	WHITE	49-16-U04A	4/0	3	3	3	3	3	3
250 MCM	RED	49-16-U250	250						
300 MCM	BLUE	49-16-U300	300						
350 MCM	BROWN	49-16-U350	350						
400 MCM	GREEN	49-16-U400*	400	4	Lugs: 4 Splices: N/A	4	4	Lugs: N/A Splices: 4	4
500 MCM	PINK	49-16-U500*	500						
600 MCM	BLACK	49-16-U600*	600						
750 MCM	YELLOW	49-16-U750*	750						

		Copper Short and Long Barrel Lugs and Splices							
		Anderson	Blackburn®	Bumdy	ILSCO	Panduit	Penn-Union	T&B	
Splice Model #'s		VHS, VHSS	CSP, CU	YS, YS-L, YS-T	CT, CTL	SCH, SCL, SCS, SCSS	BBU, BCU	54504-54523-TB, 54804-54823	
Lug Model #'s		VHCL, VHCS	CTL, CTL-2, CTL-L, LCN	YA, YAZ, YA-L, YA-2L, YA-2LN, YA-L-NT, YA-L-2NT, YA-L-TC, YA-L-2TC, YA-2N, YA-TC, YA-2TC	CLN, CLND, CLNS, CLW, CLWD, CRA, CRB, CRA-L, CRB-L, CRA-2L, CRB-2L, CSW, CSWS	LCA, LGAS, LCB, LCC, LCD	BBLU, BLU	54104-54123-TB, 54204-54223, 54850BE-54880BE, 54930BE-54923BE	
Wire size	Color Code	Milwaukee Die Part Number	Die Indentation Mark	Lugs: Total # of Crimps		Splices: Total # of Crimps per Side			
				Anderson	Blackburn®	Bumdy	ILSCO	Panduit	Penn-Union
#8 AWG	RED	49-16-U008C	8	1	1	1	1	1	1
#6 AWG	BLUE	49-16-U006C	6						
#4 AWG	GREY	49-16-U004C	4						
#2 AWG	BROWN	49-16-U002C	2						
#1 AWG	GREEN	49-16-U001C	1	2	2	2	2	2	2
1/0 AWG	PINK	49-16-U01AC	1/0						
2/0 AWG	BLACK	49-16-U02AC	2/0						
3/0 AWG	ORANGE	49-16-U03AC	3/0						
4/0 AWG	PURPLE	49-16-U04AC	4/0	Lugs: 2 Splices: N/A	2	2	2	2	2
250 MCM	YELLOW	49-16-U250C	250						
300 MCM	WHITE	49-16-U300C	300						
350 MCM	RED	49-16-U350C	350						
400 MCM	BLUE	49-16-U400C	400	3	3	3	3	3	3
500 MCM	BROWN	49-16-U500C	500						
600 MCM	GREEN	49-16-U600C	600						
750 MCM	BLACK	49-16-U750C*	750						

Connections made with tool 2779-20 or 2679-20 with jaw 49-16-U000 or 49-16-U111 and combination of die and connector part numbers in the charts above produce cULus Classified crimps according to the UL 486A-B classification standards. Number of crimps is a minimum. Additional crimps would not negatively affect the integrity of the connection so long as they are uniformly placed between the intended crimp area of the connector, typically outlined with color bands or knurls.

\*Connections must use jaw 49-16-U111

For the latest listing of approvals, visit [milwaukeeul.com](http://milwaukeeul.com). For technical or service assistance, contact Milwaukee Customer service at 1-800-729-3878.

950163421-01 (A) 10-20-2062





# 750 MCM CU / AL CRIMPING JAW

Launch Promotion

Buy-in: 01.15.19 - 04.30.19 In Store Execution: 02.01.19 - 04.30.19 Online Execution: 02.01.19 - 04.30.19

PCE#: 197074

FEB

MAR

APR

MAY

JUN

JUL

AUG

SEP

OCT

NOV

DEC

JAN

## BUY A FORCELOGIC® 600 MCM CRIMPER



2679-750C  
2679-750A

INSTANT GRAT  
ONLY

## GET YOUR CHOICE OF 750MCM JAW



49-16-2780

MUST PURCHASE (3+) UNIT ON A SINGLE PO TO QUALIFY FOR PROMOTIONAL PRICING

ITEM #	DESCRIPTION	50% OFF PRICE	HEAVY DUTY	PROMO PRICE	IMAP
2679-750C	M18™ FORCE LOGIC™ 600 MCM Cu Crimper Kit w/ 750 MCM Expanded Jaw	\$3,299.00	\$2,999.00	N/A	\$3,999.00
2679-750A	M18™ FORCE LOGIC™ 600 MCM Al Crimper Kit w/ 750 MCM Expanded Jaw	\$3,299.00	\$2,999.00	N/A	\$3,999.00
49-16-2780	750 MCM Cu / 1000 MCM Al Cable Cutting Jaw	\$437.00	\$419.50	FREE	FREE

Confidential Document Property of MILWAUKEE TOOL Brookfield, Wisconsin 53005  
Promotion subject to change. Limited Quantities. Cannot be combined with any other promotions unless noted