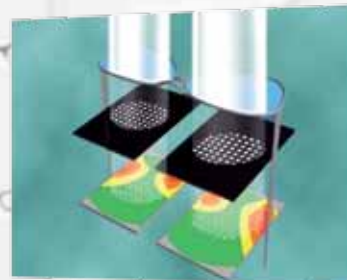


# Ez Meter

## EZ-200 Advance



# EZ-200 ADVANCE AUTOMATED EYEGLASSES ANALYZER

## Features

- › Easy operation
- › Automatic lens type detection
- › Meets ISO 8598 sphere accuracy requirements\*
- › Progressive map display



**1** Place eyeglasses

**2** Push the button



**3 steps!**

### 1. Place eyeglasses!

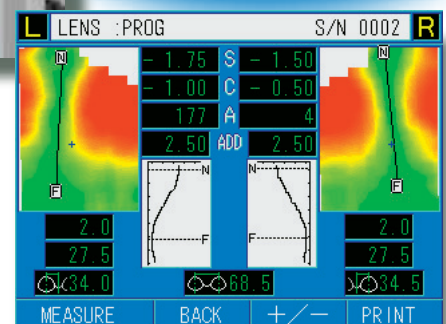
Simply place the eyeglasses into the EZ-200 Advance.

### 2. Push the button!

Just the push of one button will start the fully automated positioning, alignment and measurement of the eyeglasses.

### 3. Obtain measurement results!

All measurement data will be automatically displayed on the EZ-200 Advance. If required, a progressive map can also be displayed.



**3** Obtain results

# FEATURES

## EZ-200 Advance specific advantages:

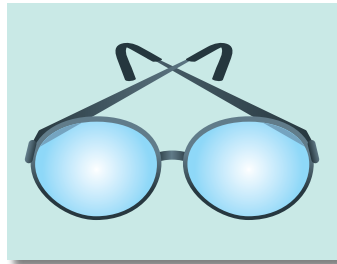
- The EZ-200 Advance meets ISO 8598 sphere accuracy requirements.\*
- Unsurpassed ease-of-use; no technical knowledge required.
- The ideal screening instrument for all eye care professionals.

## Automatic lens type detection

The EZ-200 Advance automatically detects three different types of lenses and switches the display accordingly.

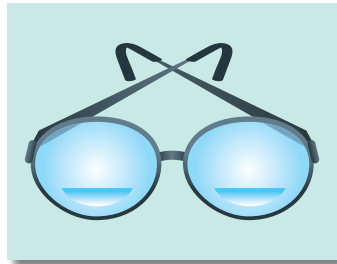
### Single vision eyeglasses

Data is displayed in easy-to-read large characters.



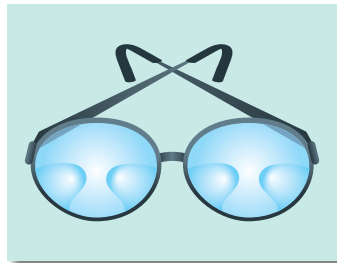
### Bifocal eyeglasses

The clear layout of the display screen enhances visibility of the data.



### Progressive eyeglasses

Measurement results for progressive glasses are displayed in easy-to-read maps, indicating far, near and the progressive area.



## Meets ISO 8598 requirements for sphere accuracy

The EZ-200 Advance satisfies the requirement for sphere accuracy in ISO 8598\*. The instrument not only provides ease-of-use, but also produces accurate readings.

## Auto dust detection function:

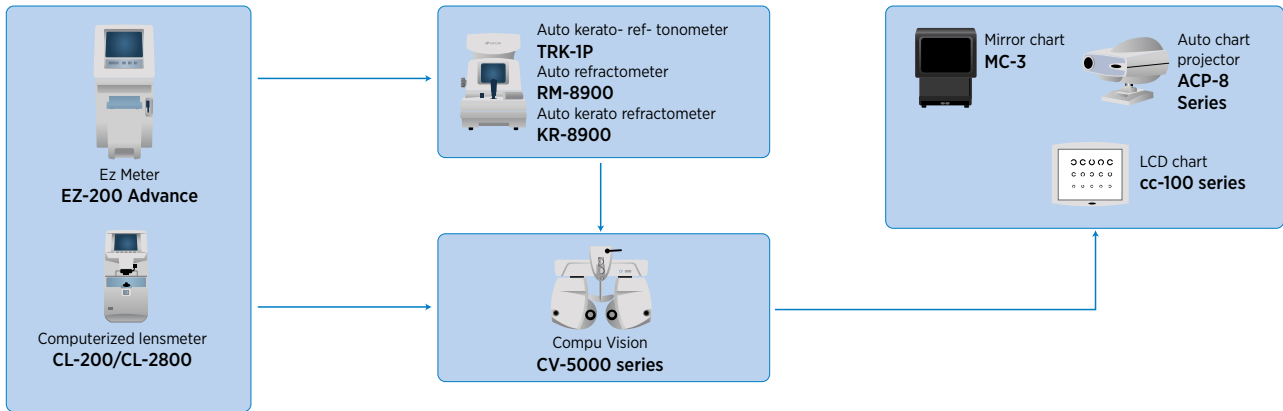
As part of its high-tech design, the EZ-200 Advance incorporates an auto dust detection function that indicates if dust is on the glass-plates and shows the exact location of the dust on the displayed map.

\* The EZ-200 Advance is not a lensmeter, but a lens analyzer. The EZ-200 Advance satisfies the sphere accuracy required for digitally indicating instruments in ISO 8598. The eyeglasses analyzed should have a PD within the 52-76mm range and the maximum tilt should be less than 10 degrees.

# Specifications

<b>Measurement range</b>	Spherical power: 0 to ±15D (0.25D step)/Cylindrical power: 0 to ±10D (0.25D step) Cylindrical axis: 0 to 180°(1°step)/Prismatic power: 0 to 10Δ (at PD 64mm) PD Power: 0 to 10D/PD Range 48 to 80 mm (hPD 24 to 40mm)
<b>Measurement area</b>	24 ×44 mm (each for left & right)
<b>Measurement time</b>	Single Lenses (5 sec.)/Progressive Lenses (10 sec.) *only measurement time
<b>Light source</b>	LED 623nm
<b>Monitor</b>	5.7 inches LCD color indication: R/L, S, C, A, Add, hPD, PD, progressive area map (24×44mm)
<b>External interface</b>	RS-232C (IN/OUT) & USB (Ver.2.0) (OUT)
<b>Power consumption</b>	60VA
<b>Power supply</b>	AC (120 a 240V)
<b>Dimension</b>	(200×260×410) mm
<b>Weight</b>	12kg

# System Chart



**IMPORTANTE**

Subject to change in design and/or specifications without advanced notice.  
In order to obtain the best results with this instrument, please be sure to review all user instructions prior to operation.

**Topcon Europe Medical B.V.**  
Essebaan 11; 2908 LJ Capelle a/d IJssel; P.O. Box 145;  
2900 AC Capelle a/d IJssel; The Netherlands  
Phone: +31-(0)10-4585077; Fax: +31-(0)10-4585045  
E-mail: medical@topcon.eu; www.topcon-medical.eu

**Topcon Danmark**  
Praestemarksvej 25; 4000 Roskilde, Danmark  
Phone: +45-46-327500; Fax: +45-46-327555  
E-mail: info@topcondanmark.dk  
www.topcondanmark.dk

**Topcon Scandinavia A.B.**  
Neongatan 2; P.O. Box 25; 43151 Mölndal, Sweden  
Phone: +46-(0)31-7109200; Fax: +46-(0)31-7109249  
E-mail: medical@topcon.se; www.topcon.se

**Topcon España S.A.**  
HEAD OFFICE; Frederic Mompou, 4;  
08960 Sant Just Desvern; Barcelona, Spain  
Phone: +34-93-4734057; Fax: +34-93-4733932  
E-mail: medica@topcon.es; www.topcon.es

**Topcon Italy**  
Viale dell' Industria 60;  
20037 Paderno Dugnano, (MI) Italy  
Phone: +39-02-9186671; Fax: +39-02-91081091  
E-mail: topconitaly@tiscali.it; www.topcon.it

**Topcon S.A.R.L.**  
HEAD OFFICE; 89, rue de Paris; 92585 Clichy, France  
Phone: +33-(0)1-41069494; Fax: +33-(0)1-47390251  
E-mail: topcon@topcon.fr; www.topcon.fr

**Topcon Deutschland GmbH**  
Hanns-Martin-Schleyer Strasse 41;  
D-47877 Willich, Germany  
Phone: (+49) 2154-885-0; Fax: (+49) 2154-885-177  
E-mail: med@topcon.de; www.topcon.de

**Topcon Portugal**  
Rua da Forte, 6-6A, L-0.22; 2790-072  
Carnaxide; Portugal  
Phone: +351-210-994626; Fax: +351-210-938786  
www.topcon.pt

**Topcon Polska Sp. z o.o.**  
ul. Warszawska 23; 42-470 Siewierz; Poland  
Phone: +48-(0)32-670-50-45; Fax: +48-(0)32-671-34-05  
www.topcon-polska.pl

**Topcon (Great Britain) Ltd.**  
Topcon House; Kennet Side; Bone Lane; Newbury  
Berkshire RG14 5PX; United Kingdom  
Phone: +44-(0)1635-551120; Fax: +44-(0)1635-551170  
E-mail: medical@topcon.co.uk; www.topcon.co.uk

**Topcon Ireland**  
Unit 276, Blanchardstown; Corporate Park 2  
Ballycoolin; Dublin 15, Ireland  
Phone: +353-18975900; Fax: +353-18293915  
E-mail: medical@topcon.ie; www.topcon.ie



**TOPCON CORPORATION**

75-1 Hasunuma-cho, Itabashi-ku, Tokyo 174-8580, Japan. Phone:3-3558-2523/2522 Fax:3-3960-4214 www.topcon.co.jp