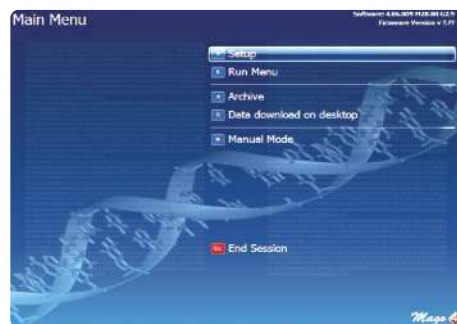
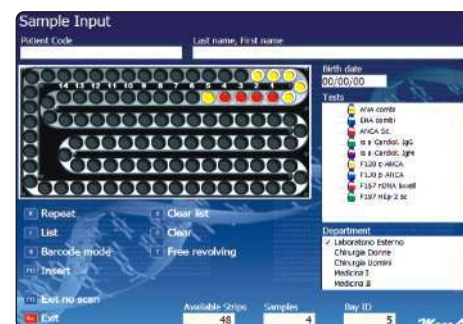


Easy to use software

The easy icon & keys helps the user to use the software with utmost convenience.



Main Screen



Sample Outlay Screen



Reagents Outlay Screen



Elisa plate outlay screen shot

Elisa plate outlay screen during processing : Each step can be viewed on the computer screen when the test procedure is running.

Colour change in each microwell & every step of the process can be visualised.

Incorrect processed well is indicated during the assay procedure.

Test List

Infectious Elisa	Autoimmune ELISA	IFA Test	Hepatic Markers	Other Elisa
→ HIV	→ ANA	→ ANA	→ HAV	→ T.B ELISA
→ HBsAg	→ dsDNA	→ n-DNA	→ HBsAg	→ Transferin
→ HCV	→ ssDNA	→ ANCA	→ HBcAg	→ Ferritin
	→ ANCA	→ EMA	→ HBeAg	→ Beta-2 Microglobulin
	→ Anti CCP	→ AMA	→ Anti – HBs	→ Vitamin D
	→ RF IgM/IgG	→ COMVI	→ HCV	→ Vitamin B12
			→ HEV	→ Malaria
			→ HDV	→ Dengue IgM/IgG
				→ Leptospira
				→ Syphilis

* Open System and User Friendly Software is capable to programme any ELISA / IFA test on the processor.

TECHNICAL SPECIFICATIONS

Sample Dispense

Probe with disposable carbonated tips
96 – 192 disposable tips

Sample Volume

Sample tube minimum: 200 µl
Micro sample tube minimum: 100 µl

Tube Requirement

Tube height : 75-100 mm
Tube diameter : 12-13 mm

Sample Capacity

104 samples per run,
192 pre- dilutions wells

Reagent Capacity

9 reagent bottles, 18 position for tubes

Wash Manifold

16 needles - 8 channel wash delivery, 8 channel wash aspiration

Measurement range

0.000-3.000 OD

Wavelength range

400-800 nm

Accuracy

±1% and ±0.005 OD at 1.500 OD

Precision

±0.5% and ±0.005 OD at 1.500 OD

Reading speed

5 seconds

Interference filters

405,450,492,620 nm & 2 optional

Light source

Halogen lamp

Barcode Reader

Handheld, reads up to 30 alphanumeric characters Barcode Symbology Code 128, Code 39, Coda bar, Interleaved 2 of 5

LIS Interface

RS232, bi-directional

Physical Dimensions

Length: 47.25 in (120 cm)

Height

27.5 in (70 cm)

Width

26 in (66 cm)

Weight

approximately 200 lbs (90 kg)

Operating Environment

Temperature: 64-86° F (18-30° C)

Humidity

0- 80% (non-condensing)

Altitude

< 1.3 miles (2000 meters)

Power Requirements

115-230 V ; 50/60 Hz
4-7 A grounded 3-plug outlet

Bar-Code

Positive bar-code sample identification

For further information, please contact :
TRANSASIA BIO-MEDICALS LTD.

Transasia House, 8 Chandivali Studio Road, Andheri (E), Mumbai - 400 072 Tel.: (022) 40309000, Fax : (022) 2857 3030 Email : transasia@transasia.co.in Website : www.transasia.co.in



Mago 4

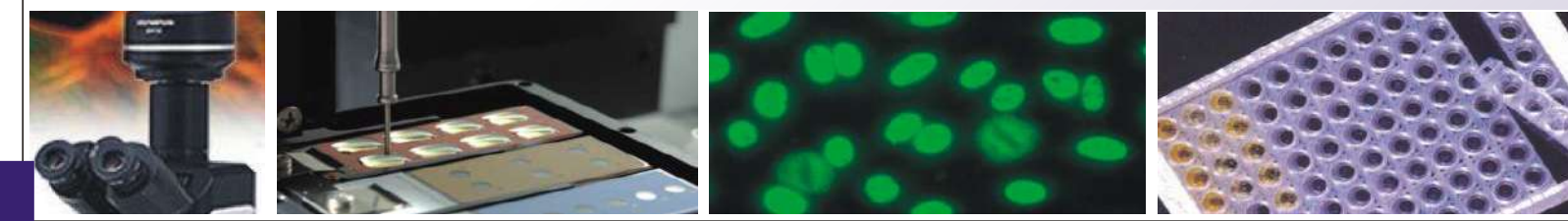
Fully Automated ELISA and IFA Processor

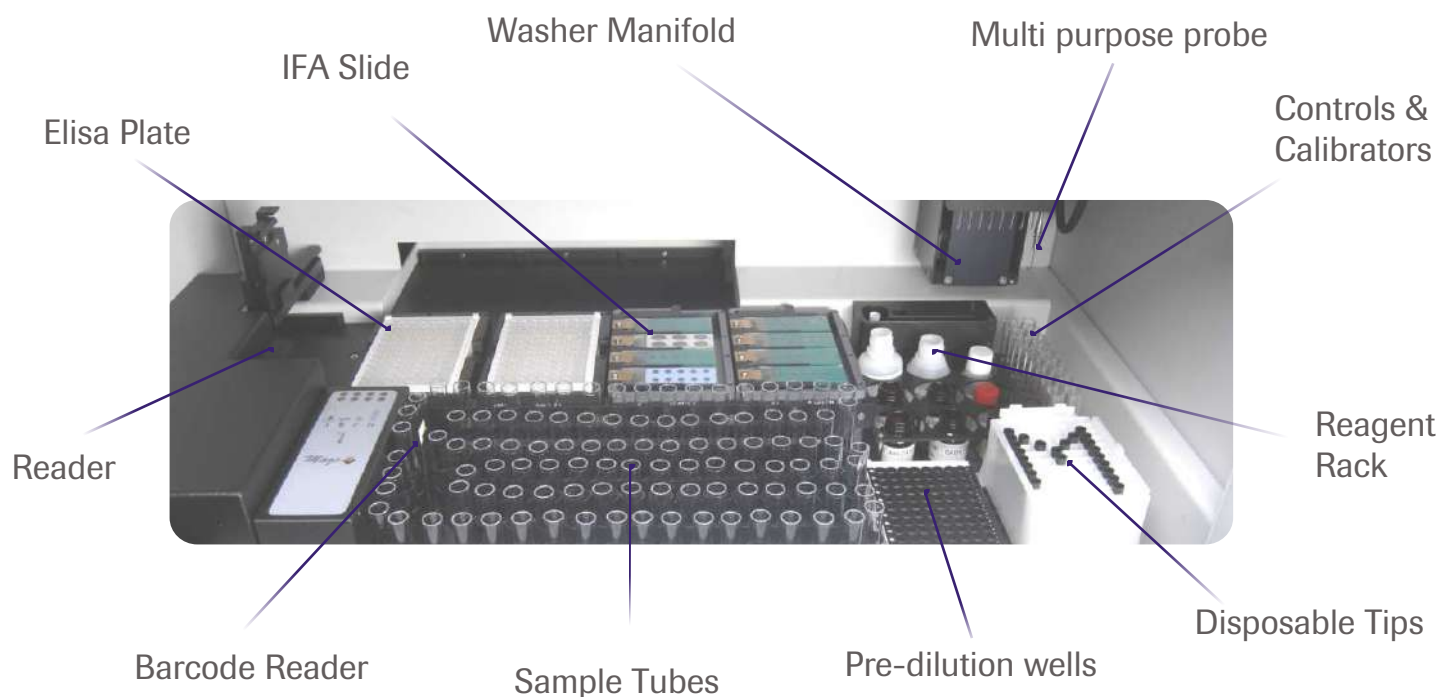
Now 1 = 2

ELISA & IFA... Simultaneously



Specifications subject to change without notice.

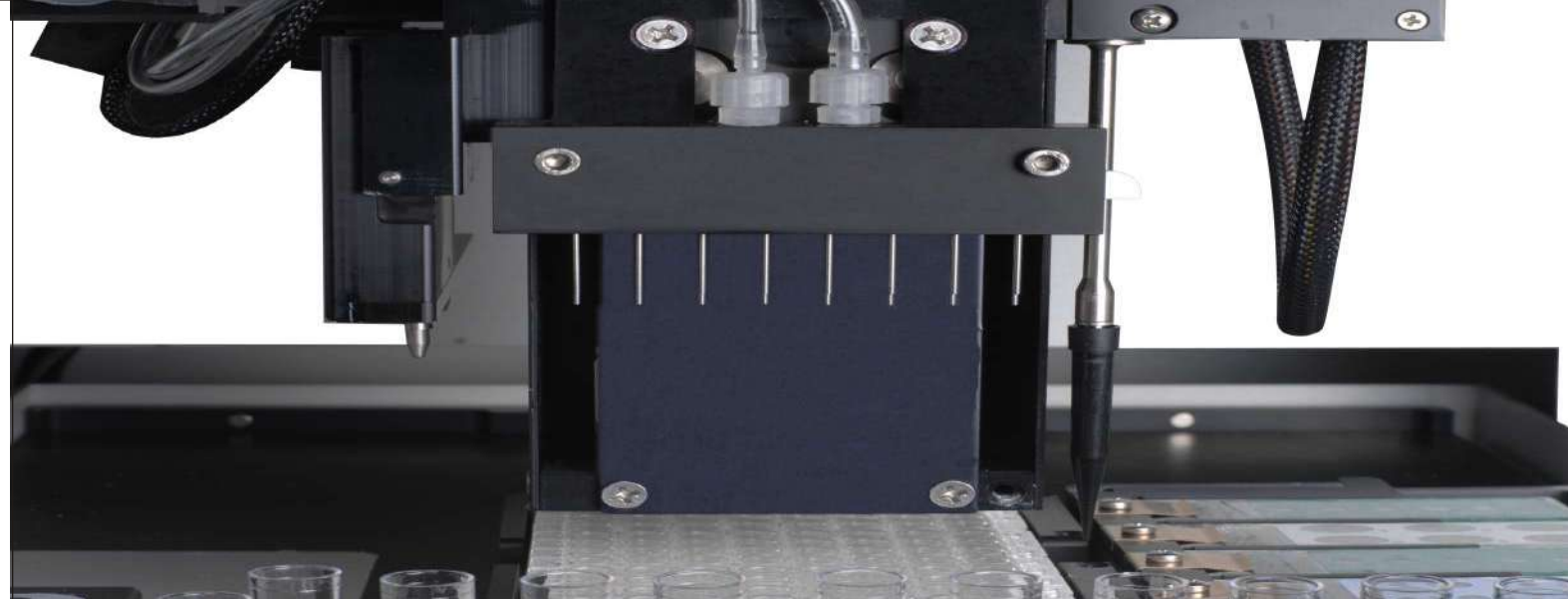




Benefits of complete automation.....quality, speed, reliability, high throughput, combination of all ELISA & IFA parameters in a single versatile & steady system.

Total Automation of following procedures :

- Loading of work sheet directly from host or keyboard
- Samples and reagents dilutions
- Samples and reagents dispensing
- Incubation
- Washing
- Reading (single, double, triple wavelength)
- Automatic internal Quality Control evaluation
- Data storage



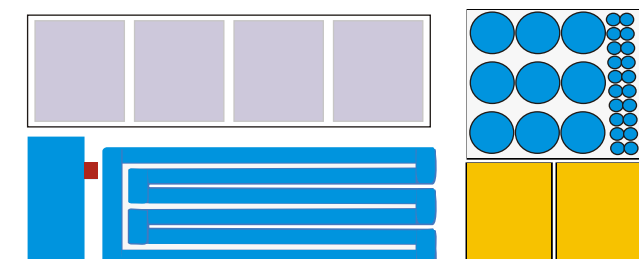
Features :

- 4 Elisa Plates for 12 test per plate or 16 IFA slides.
- One teflon-steel needle with disposable tips option (both with liquid level sensor) for samples and reagents
- The IFA slides washing step is performed by the needle on a well by well basis to avoid any risk of cross - reaction
- Easy and prompt loading of slides into slide holders
- IFA tests on slides are performed as screening and / or titration, with a serial dilution capability
- Disposable tips capability for pipetting of samples, controls & calibrators
- One specific reagent-rack for Reagent bottles (diluent, conjugates, substrates) and for tubes (standards, controls, samples, pre-dilution etc)
- Reagent rack is a removable device so that once loaded can be stored & reused in subsequent runs of the same type
- Washing manifold with 16 probes, 8 for aspiration (longer) and 8 for dispensing (shorter)
- The automated well washing performed at customized volumes and cycles
- Dedicated drawer for high volume bottles (wash buffers, distilled water, wastes) with individual liquid level sensors
- An independent incubation modules for each plate (from RT upto 55°C)
- Windows XP software platform



- Multilingual and intuitive software
- Positive samples and reagents identification
- Customized medical report
- Complete integration with LIS system
- Result can be exported in excel format
- Levey-Jennings and Westgard's rules programs on board

Flexible options :



35 tubes **96 tips**

Total capability:
139 tubes and
96 disposable tips per batch

35 tubes **96 pred.**

Total capability:
139 tubes and
96 predilution wells

Total capability:
104+35+35= 174 tubes
per batch

35 tubes **35 tubes**

Total capability:
104 tubes and
192 disposable tips
per batch

96 disposable tips **96**

Total capability:
104 tubes and
192 predilution wells
per batch

96 predilution wells **96**

Total capability:
104 tubes and
96 predilution wells and
96 disposable tips

96 tips **96 pred**