

stryker®

COMMITTED
TO YOUR SUCCESS.



Cordless Driver 4 & SABO™ 2

Your one-system solution for
Sports Med & Ortho Trauma

**TOTAL
CONFIDENCE™**

Experience the **stryker®** difference

Sports Med & Ortho Trauma

The Next Evolution of Confidence

Your One-System Solution

Developed specifically for Sports Med and Ortho Trauma, this system produces the dependable power you require, along with the long-lasting reliability of Stryker SmartLiFE™ Li-Ion Batteries.

The cordless design of CD4™ and SABO2 Sagittal Saw allows for maximum mobility in the sterile field. Both are engineered to be lightweight and ergonomic for comfortable control.

Leveraging over 30 years of surgical battery power tool innovation, we've designed this platform for exceptional performance, reliability, ease of use and efficiency, simplifying your ability to deliver positive outcomes – with total confidence.



Cordless Driver 4

Compact, versatile and ergonomic, Cordless Driver 4 enables you to pin, drill, cut and ream with ease. Our exclusive *POWERream* Technology produces a significant increase in torque, providing the confidence to ream in Sports Med and Ortho Trauma procedures.

POWERream™ Technology

- Cordless Driver 4**
4405-000-000
- POWERream* Hudson/Modified Trinkle**
4405-235-000
- POWERream* Hudson**
4405-213-000
- POWERream* 1/4" Chuck**
4405-231-000
- POWERream* Trinkle**
4405-260-000
- POWERream* Large AO**
4405-210-000



SABO2 Sagittal Saw

Lightweight and precise, SABO2 is a dedicated handpiece that provides cutting efficiency and consistency. It delivers long-lasting power, and is optimised for cutting speed, control and accuracy.

SABO2 Sagittal Saw
4408-000-000

Performance

- The CD4 *POWERream* Technology option delivers more torque, allowing a single handpiece to complete the most challenging Sports Med and Ortho Trauma reaming procedures.
- The integrated handpiece microprocessor continually regulates power output, providing you with consistent reliability and peace of mind.
- SABO2 Sagittal Saw has a 32% increase in run time versus a handpiece with sag saw attachment.

Reliability

- Maximise operating room uptime and eliminate the guesswork of scheduling maintenance by activating SORN Remote Device Management, allowing you to seamlessly maintain your power tool inventory for peak performance.
- Stryker SmartLiFE Li-Ion Batteries provide longer-lasting, more reliable power tool performance.
- All handpieces must pass our 100-point Quality Check inspection, which ensures maximum reliability.

Ease of Use

- The cordless design of CD4 and SABO2 allows for maximum mobility in the sterile field.
- CD4 and SABO2 are engineered to be lightweight and ergonomic for comfortable control.
- CD4 quick-connect attachments streamline your ability to cut, ream, drill and pin, creating efficiencies in the OR.
- SABO2 sagittal head is 40% closer* to the surgeon's hand for enhanced control and maneuverability.

Standardisation

- Stryker SmartLiFE Li-Ion batteries power the CD4, SABO2 and System 7 handpieces – reducing inventory and streamlining OR setup.
- Backwards compatibility with Cordless Driver attachments, cutting accessories and System 6 batteries, helping to reduce inventory and replacement costs.

*Versus CD4 with sagittal attachment.

Timeline



POWEReam Technology

The CD4 *POWEReam* Technology option delivers more torque, allowing a single handpiece to complete the most challenging Sports Med and Ortho Trauma reaming procedures.

Power

- CD4 with *POWEReam* Technology is ergonomically designed for balance and comfortable control
- Delivers 93% more torque
- Re-engineered handpiece designed for reaming in high-torque applications
- Lithium Ion battery technology allows for longer-lasting and consistent power throughout the case

Efficiency

- One handpiece solution for Sports Med and Ortho Trauma reaming applications
- Quick-connect design is easy to use and reduces set-up time

POWEReam Hudson/Modified Trinkle
4405-235-000



POWEReam Hudson
4405-213-000



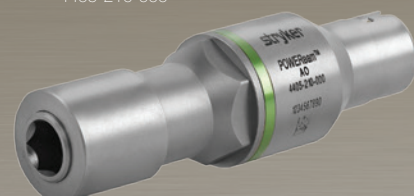
POWEReam 1/4" Chuck
4405-231-000



POWEReam Trinkle
4405-260-000



POWEReam Large AO
4405-210-000



Cordless Driver 4
4405-000-000



CD4

One Handpiece – Multiple Options



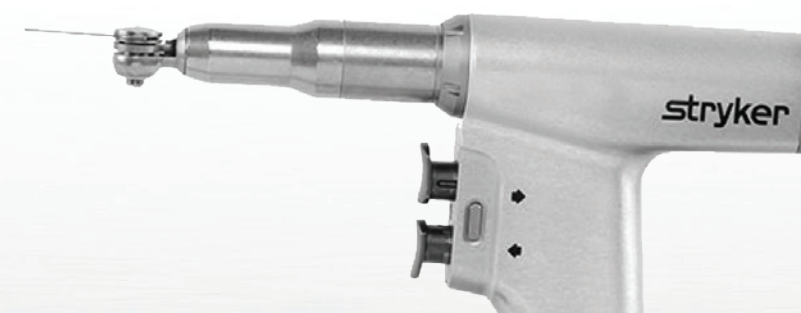
Reaming



Driving Pins and Wires



Drilling



Cutting

Sterilisation

Sports Med & Ortho Trauma

Real innovation is often found in small details – the kinds of details that make our sterilisation cases more cost effective, easier to use and more efficient.

Efficiency

- Sealed containers minimise SPD prep time
- Cases feature plastic corner guards to reduce the possibility of tearing blue wrap
- Ergonomic case handles protect against heat, and are more durable and easier to grip for safe transportation
- Redesigned insert trays make it easier to load handpieces and attachments in sterilisation cases
- Bar codes on handpieces eliminate the need for tracking labels

Ease of Use

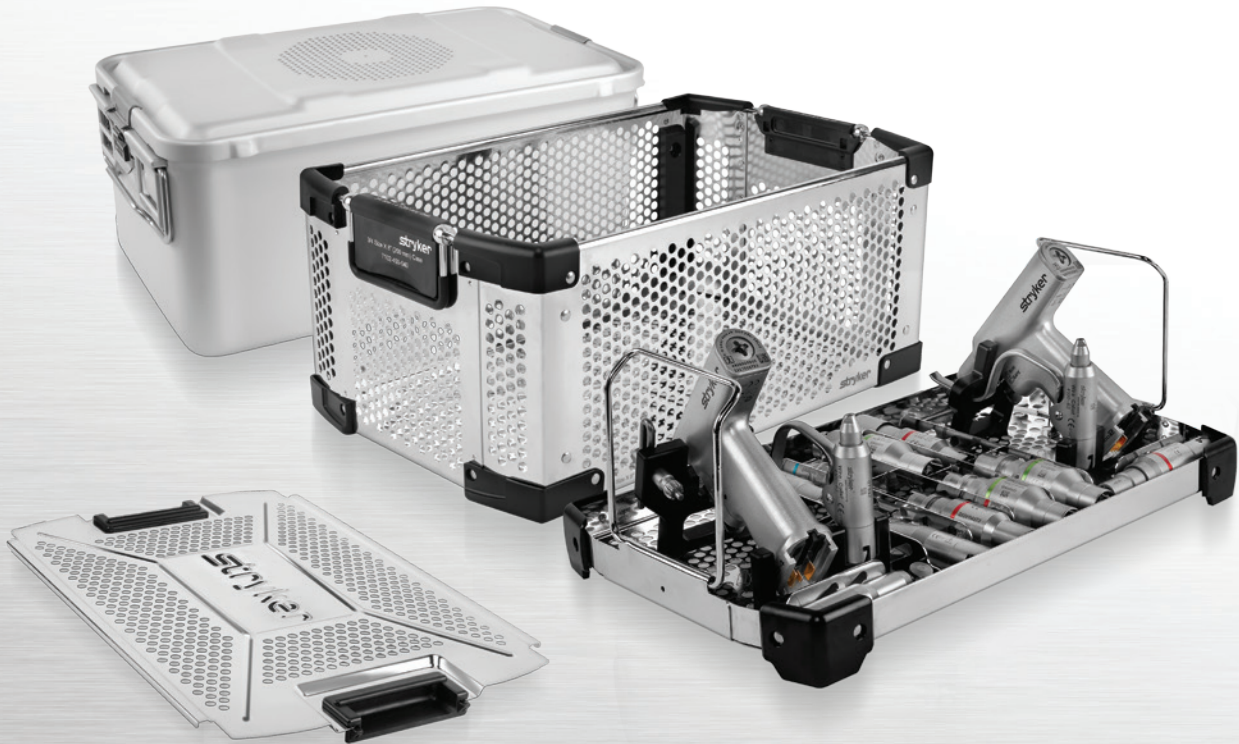
- Stainless steel insert trays are easy to load and validated for automated washing
- Sealed containers with inserts reduce OR set-up time

Cost Control

- Sealed containers eliminate the need to purchase blue wrap
- All tray inserts fit both rigid and wrapped sterilisation containers
- Ability to purchase sterilisation cases and inserts separately
- Industrial-grade sterilisation cases are more durable and last longer than previous generations

Education

- ProCare.com website has complete cleaning and sterilisation instructions
- Cleaning and sterilisation CDs also available



Batteries

Sports Med & Ortho Trauma

When your team members enter the operating room, they need to feel confident that their power tools are ready to meet their needs. That's why CD4 and SABO2 feature the Stryker SmartLiFE Battery with exclusive ACP Technology. It runs longer, weighs less, offers built-in safety mechanisms and provides proactive warnings – so surgical teams can depend on consistency in every Sports Med and Ortho Trauma case.



Quality & Reliability

- No memory effect enables maximum capacity throughout the life of the battery
- Stryker SmartLiFE recyclable batteries provide a green solution
- Laser welded to prevent moisture from entering the battery
- Universal charger identifies over exposure to heat
- Extended battery shelf life

Performance

- Increased run time:
 - Small battery runs 220% longer
 - Large battery runs 183% longer
- Lithium Ion technology provides consistent power throughout the case

Stryker SmartLiFE Batteries

- Lithium Ion cell technology
- 2-1/2 times the shelf life of previous battery systems
- Indicator light proactively alerts OR team when battery is near the end of its charge
- Large and small sizes compatible with all CD4 and SABO2 handpieces
- Stores and transfers data to universal charger, enabling SORN Remote Device Management
- Enhances performance by communicating directly with the handpiece

Proprietary battery safeguards provide:

- Maximum reliability by regulating voltage and alerting users in the event of over exposure in autoclave
- Unmatched safety by automatically removing voltage when the battery is not on a handpiece or charger



Ordering Information

Cordless Driver 4 and SABO2 bring you leading-edge technology, backed by a committed support team at Stryker. For questions or to place your order today, please contact your Stryker Territory Manager.

Handpieces

| | |
|---------------------|--------------------|
| 4405-000-000 | Cordless Driver 4 |
| 4408-000-000 | SABO2 Sagittal Saw |

Sterile Batteries

| | |
|---------------------|---------------------------------|
| 7110-120-000 | Universal Battery Charger |
| 7212-000-000 | Stryker SmartLiFE Small Battery |
| 7215-000-000 | Stryker SmartLiFE Large Battery |

Sterilisation Accessories

| | |
|---------------------|---|
| 4405-452-000 | CD4 & SABO2 Sterilisation Case plus Insert Tray |
| 7102-450-040 | 3/4 x 8" Sterilisation Case |
| 4405-452-010 | CD4 & SABO2 Insert Tray |

Accessories

| | |
|-----------------------|--|
| 4405-210-000 | <i>POWER</i> ream Large AO |
| 4405-213-000 | <i>POWER</i> ream Hudson |
| 4405-231-000 | <i>POWER</i> ream 1/4" Chuck with Key |
| 4405-235-000 | <i>POWER</i> ream Hudson Modified Trinkle |
| 4405-260-000 | <i>POWER</i> ream Trinkle |
| 4100-062-000 | Wire Collet (0.28" - 0.71" Diameter) |
| 4100-125-000 | Pin Collet (.078" - .125" Diameter) |
| 4100-126-000 | Adjustable Pin Collet (.079" - .126" Diameter) |
| 4100-225-000 | Pin Collet (.125" - .160" Diameter) |
| 4100-110-000 | AO Small Drill |
| 4100-120-000 | T-Latch |
| 4100-131-000 | 1/4" Drill Chuck (w/Key) |
| 4100-132-000 | 5/32" Drill Chuck |
| 4100-133-000 | 1/4" Keyless Drill Chuck |
| 4100-134-000 | 1/8" Keyless Drill Chuck |
| 4100-135-000 | Hudson/Modified Trinkle Drill |
| 4100-160-000 | Trinkle Drill |
| 4100-210-000 | AO Large Reamer |
| 4100-231-000 | 1/4" Reamer Chuck (w/Key) |
| 4100-235-000 | Hudson/Modified Trinkle Reamer |
| 4100-260-000 | Trinkle Reamer |
| 4100-260-000S4 | DHS Reamer |
| 4100-310-000 | Right Angle Drive - AO |
| 4100-335-000 | Right Angle Drive - Hudson/Modified |
| 4100-355-000 | Radiolucent Right Angle Drive |
| 4100-400-000 | Sagittal Saw Attachment |
| 4100-410-000 | Right Angle Drive Adaptor |
| 4100-600-000 | 1:1 Bur Attachment |
| 4100-700-000 | High Speed Bur Attachment |
| 4100-131-132 | Universal Key for 4100-131 or 4100-132 |



Reconstructive

Hips
Knees
Trauma & Extremities
Joint Preservation
Orthobiologics

Medical & Surgical

Power Tools & Surgical Accessories
Image Guided Navigation
Endoscopy & Arthroscopy
Integrated Communications
Beds, Stretchers & EMS
Sustainability Solutions

Neurotechnology & Spine

Cranio-maxillofacial
Interventional Spine
Neurosurgical, Spine & ENT
Neurovascular
Spinal Implants

The information presented here is intended to demonstrate the breadth of Stryker product offerings. Always refer to the package insert, product label and/or user instructions before using any Stryker product. Products may not be available in all markets. Product availability is subject to the regulatory or medical practices that govern individual markets. Please contact your Stryker representative if you have questions about the availability of Stryker products in your area.

Products referenced with ™ designation are trademarks of Stryker. Products referenced with ® designation are registered trademarks of Stryker.

Literature Number: 9100-001-927 Rev. D
PF/P.S.

© 2013 Stryker
Printed in Australia

Stryker South Pacific
8 Herbert St,
St Leonards, NSW, 2065
www.stryker.com