

OLYMPUS

Your Vision, Our Future

EVIS EXERA Video Bronchoscope

BF-XT160



FROM SCOPES TO
ENDOSCOPY

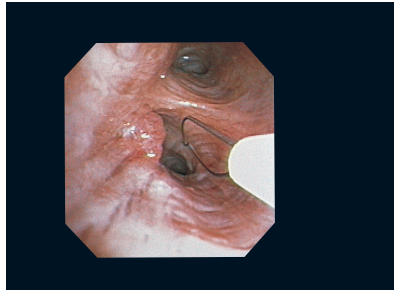
Powerful treatment and imaging performance



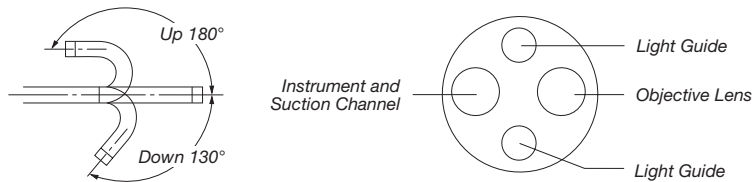
A wide variety of treatment options

Due to the extra-wide 3.2 channel of the BF-XT160 – the largest available in video bronchoscopes – you can insert and manipulate Endo-Therapy instruments, while simultaneously aspirating fluids. In addition the BF-XT160 high-resolution CCD that delivers the sharpest images ever.

And all with a narrow outer diameter of just 6.3 mm.



BF-XT160



- Channel diameter of 3.2 mm is the largest channel ever in a videobronchoscope
 - Outer diameter: 6.3 mm
 - Compatible with EBUS (EndoBronchial UltraSound) the large channel permits insertion of the UM-BS20-26R ultrasound probe, including balloon sheath
 - CCD colour chip technology generates brilliant, high resolution video images
 - Short rigid section at the distal end and small bending radius
 - Insertion tube length of 600 mm makes handling easier
- In addition:**
- Full compatibility with CV-160 also used for GI endoscopes

Specifications

Optical System	Field of view	120°
	Direction of view	0° (Forward viewing)
	Depth of field	3 to 100 mm
Insertion Tube	Distal end outer diameter	6.2 mm
	Insertion tube outer diameter	6.3 mm
	Working length	600 mm
Instrument Channel	Channel inner diameter	3.2 mm
	Minimum visible distance	3 mm from the distal end
Bending Section	Angulation range	Up 180°, Down 130°
High Frequency Compatibility		Yes
Laser Compatibility		YAG, 810 nm diode
Total length		870mm

- Simple reprocessing with Olympus standard equipment
- Standardised accessories can be used with all Olympus scopes
- Compatibility with high frequency treatment devices for added versatility

Specifications and design are subject to change without any obligation on the part of the manufacturer.