

The **Embla MDrive** is a wireless, integrated, and flexible, communication unit.



- Color LCD screen allows you to check impedance and signal quality at the bedside
- Wireless IP camera interface for those times when portability precludes a wired option
- A removable SD memory card allows for portable recording as well as providing data backup during wireless recording

The **Embla MDrive** is the newest addition to the Embla product line featuring wireless technology with an IP camera interface, making installation quick and easy with no need for additional cables. This high performance device also offers a high quality color LCD screen for signal display, convenient for bedside bio-calibration and impedance checks, and includes a removable memory card for raw data backup. The MDrive interfaces with the Embla S4500™ or N7000™ amplifier and can be used during an attended or ambulatory setting with up to 8 additional DC inputs for expanded collection. It is also compatible with the New Sandman Elite 10 Software.

Flexible

- Attended Data Collection – wireless* or via network cable – optional backup of raw data on removable SD card
- Ambulatory Data Collection – collected data stored on removable SD card
- Choose from preset or customizable montages
- Real time impedance and signal quality check at bedside
- Ideal for all patients, including pediatric
- Custom designed wall-mounted or bedside cradle

Integrated

- Minimize cost, decrease installation time, and eliminate cabling
 - IP Video input
 - Integrated 3-port network switch for connecting IP Video and auxiliary IP network devices
- Easy patient set up with integrated LCD screen for bedside impedance and signal check
- 8 additional DC Inputs for expanded studies
- Plug and play interface with a series of external PAP, EtCO₂ and other industry leading diagnostic device

Technical specifications

The number of channels is dependent on the Embla amplifier used:

Embla S4500™ amplifier

6 x EEG + 2 mastoid + common reference

2 x EOG

3 channel chin EMG

2 x Leg EMG

1 x EKG

2 x General purpose bipolar

1 x Thermistor

1 x Snore

1 x Body position

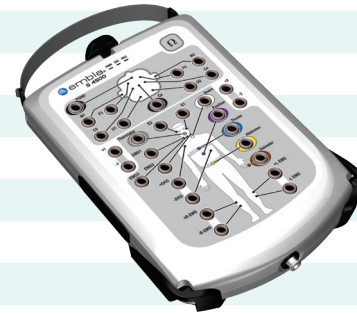
2 x XactTrace RIP effort

1 x Pressure transducer

4 channel SpO₂ (SpO₂; SpO₂)

Beat-to-beat; Pulse rate; Pulse wave)

Derived channels (Linearized flow, Flow limitation; XFlow; Phase; RMI; PTT; and more)



M7000 amplifier for expanded studies

32 x Referential channels (EEG, EOG,...)

8 x Bipolar channels (EMG, EKG,...)

1 x Thermistor

1 x Snore

1 x Body position
(3 dimensional)

2 x XactTrace RIP effort

1 x Pressure transducer

4 channel SpO₂ (SpO₂, SpO₂)

Beat-to-beat, Pulse rate, Pulse wave)

Derived Channels (Linearized flow, Flow limitation, XFlow, Phase, RMI, PTT, and more)



natus

Natus Medical Incorporated

1501 Industrial Road
San Carlos, CA 94070 USA
1-800-303-0306
+1-650-802-0400
www.natus.com

Embla European Representative

Robert-Koch-Str. 1
82152 Planegg
Germany
T: +49 89 83942-0
F: +49 89 83942-777

*RemLogic 3.2 and higher and Sandman 10.0 and higher.

© 2012 Natus Medical Incorporated. All Rights Reserved. All product names appearing on this document are trademarks or registered trademarks owned, licensed to, promoted or distributed by Natus Medical Incorporated, its subsidiaries or affiliates.

P/N 011226A