

MITSUBISHI CP-770DW

Roll-Type, Digital Dye Sublimation Color Printer

**Fastest
A6 Printer
In Its
Class**



Utilizing the newest concept in printer technology and media, the CP-770DW is a digital, roll-type dye sublimation printer providing high speed, high resolution 325 dpi color output at a low operating cost. The economical CP-770DW delivers 200 4.3" x 4.2" S size prints per roll or 130 6.4" x 4.3" L size prints per roll. Incorporating a high density 325 dpi printhead, the CP-770DW produces exceptionally sharp images with the fastest print time for any roll-type printer (approximately 19 seconds for 4.3" x 4.2" paper). It is an excellent choice for a variety of demanding, high resolution applications such as medical, digital photography, security, amusement, and industrial inspection. Other features include 16.7 million colors, universal power supply and UL/CE approvals for worldwide use, and a compact unit size for easy integration into any environment.

**JAM-FREE
RELIABILITY**

**ISO
9001
QUALITY
ASSURANCE**



**MITSUBISHI
ELECTRIC**
MEDICAL IMAGING

CP-770DW DIGITAL DYE SUBLIMATION PRINTER

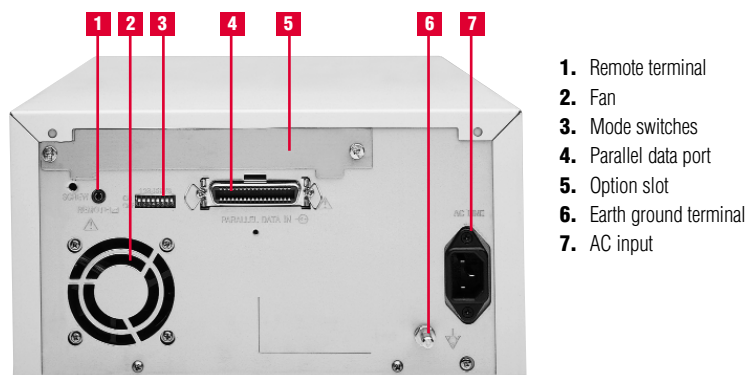


The CP-770DW color dye sublimation thermal transfer printer utilizes roll-type media for maximum performance at a minimum operating cost. For the ultimate in cost efficient, high resolution image quality, the printer of choice is Mitsubishi's CP-770DW. Key features include:

- High resolution 325 dpi thermal head
- Jam-free mechanism
- High speed printing, 19 seconds for S size; 27 seconds for L size
- Economical print capacity of 200 prints for S size, 130 prints for L size
- Accepts 4-panel media with *laminated coating* for superior photographic quality
- Precut and standard sticker media available
- Compact unit size for easy integration into any environment
- Easy top-loading slide out mechanism
- Paper tray included

SPECIFICATIONS		
FUNCTIONAL	Print Method	Dye sublimation thermal transfer
	Dot Density	325 dpi
	Resolution	S size: 1344 x 960; L size: 1676 x 1344; LL size: 1920 x 1344
	Printable Colors	16.7 million colors (256 level monochrome)
	Interface	Parallel/SCSI (optional)
MEMORY		1 frame (8 Mbytes)
OPTIONAL MEDIA	CK700	Standard paper (Size 200 sheets / L size 130 sheets) (use with PK700S, PK700L, PKC700S, PKC700L)
	PK700S	S size standard inksheet (200 sheets) (use with CK700)
	PK700L	L size standard Inksheet (130 sheets) (use with CK700)
	PKC700S	S size inksheet with inkcassette (200 sheets) (use with CK700)
	PKC700L	L size Inksheet with inkcassette (130 sheets) (use with CK700)
	CK700S4P	Surface-coated paper / S size inksheet (110 sheets)
	CK700L4P	Surface-coated paper / L size inksheet (75 sheets)
	CK700SC	Sticker with a printing width slit / S size inksheet (200 sheets)
	CK700LC	Sticker with a printing width slit / L size inksheet (130 sheets)
	CK700LL4P	Laminated (65 prints)
	CK7V1SPC	Variable size precut stickers
	CK7V10SPC	16 pictures precut S size sticker with a reprinting width slit / S size inksheet (200 sheets)
	CK7V10LPC	16 pictures precut L size sticker with a printing width slit / L size inksheet (130 sheets)
CK7V14SPC	4 pictures precut S size sticker with a printing width slit / S size inksheet (200 sheets)	
SIZE	K65H	High density thermal sensitive paper (200 sheets)
	K65HM	High density thermal sensitive paper (blueblack) (200 sheets)
SIZE	PAPER SIZE	
	S	4.3 x 4.2" (110 x 107 mm)
	S wide	4.3 x 4.2" (110 x 107 mm)
	L	6.3 x 4.3" (162 x 110 mm)
	L wide	6.3 x 4.3" (162 x 110 mm)
	LL	7.2 x 4.3" (182 x 110 mm)
	LL wide	7.2 x 4.3" (182 x 110 mm)
PRINTING SPEED	IMAGE SIZE	
	S/S wide size	~ 19 sec/sheet (standard)
	L/L wide size	~ 27 sec/sheet (standard)
OPTIONAL ACCESSORIES	SB770 (option board for SCSI-II) Passive terminator included	
PHYSICAL	Voltage	AC 120V, 50/60Hz, AC220 ~240V, 50/60Hz
	Power Consumption	1.3A @ AC 120V/0.7A @ AC 220-240V
	Dimensions (W x D x H)	11.0 x 15.7 x 5.9" (280 x 399 x 150 mm)
	Weight	~ 28.9 lbs. (13.1 kg)
	ACCESSORIES	Power cord, ink sheet cassette, operation manual, space (x4), Sheet "Installing print paper and ink sheet", driver software, attachments for thermal paper

For more information on the CP-770DW or any of Mitsubishi's other color or monochrome printers, contact Mitsubishi today. Detailed technical specifications available upon request.



1. Remote terminal
2. Fan
3. Mode switches
4. Parallel data port
5. Option slot
6. Earth ground terminal
7. AC input

Standard features, options and specifications subject to change without notice.

© 2003 Mitsubishi Electronics America, Inc. All trademarks or registered trademarks are the property of their respective holders.

Printed on 50% recycled paper including 20% post-consumer fibers, processed chlorine free. Printed with vegetable based inks.



Mitsubishi Digital Electronics America, Inc.
Imaging Products Division
9351 Jeronimo Road
Irvine, CA 92618
Toll Free: 888-307-0309
ipdinfo@mdea.com
www.mitsubishi-imaging.com

Technical Support:
Toll Free: 888-307-0309
Email: tsupport@mdea.com

Canada:
Mitsubishi Electric Sales Canada Inc.
Information Technologies Group
Markham, Ontario
905-475-7728
www.mitsubishielectric.ca

