

S SERIES™

DESIGNED FOR THE POINT OF CARE



THE S SERIES – MOUNTED AT THE POINT OF CARE

The industry's first ultrasound system designed to be wall mounted, the S Series™ product line can also be used on a stand and is custom designed for your practice. In another first, with the S Series systems, you can optimise your image by adjusting just two controls: depth and gain. Based on SonoSite's fourth-generation Turbo Technology, the S Series offers in a mountable solution an à la carte selection of all the advanced features found on our flagship M-Turbo® product. Proprietary software algorithms automatically adjust a broad range of S Series transducers to optimally perform for the specific clinical configuration of each S Series system. Setting the standard for ultimate durability and reliability, the S Series products are drop tested, built with a splash resistant interface, and can withstand the harshest environments.

S SERIES TURBO TECHNOLOGY FROM SONOSITE

Premier Package (optional software) – enables the S Series systems to use all transducers and perform all examination types.

SonoADAPT™ Tissue Optimisation – eliminates complicated manipulation of multiple controls.

SonoHD™ Imaging Technology – reduces speckle noise and other image artifacts while preserving and sharpening tissue information.

ColorHD™ Technology – increases colour performance, sensitivity and frame rates for more diagnostic information.

SonoMB® Multi-beam Imaging – increases resolution of small structures and enhances border delineation.

Advanced Needle Visualisation – aids needle visualisation while maintaining striking image quality of the target and surrounding anatomy.

CUSTOMISED FOR YOUR HOSPITAL OR OFFICE PRACTICE

Anaesthesia: S-Nerve™ System: Safely and accurately guide regional nerve blocks, upper and lower extremity nerves, caudal and neuraxial epidurals, and provide visualisation for central line placements.

Critical Care: S-ICU™ System: Eliminate delays, increase patient safety and reduce the risk of complications, while performing bedside cardiac and abdominal evaluations, DVT exams, and guide line placements.

Emergency Medicine: S-FAST™ System: Visualise cardiac, abdominal and pelvic structures for emergency and diagnostic evaluations, and safely guide procedures such as vascular access.

Interventional Radiology: S-Cath™ System: Improve patient safety practices with visualisation to guide biopsies, line and stent placement, and perform abdominal and cardiovascular imaging applications.

Musculoskeletal: S-MSK™ System: Perform diagnostic and interventional procedures, detect early joint damage and inflammation, and use as a guidance tool for injections and aspirations.

Ob/Gyn: S-Women's Health™ System: Quickly and confidently locate masses, target lesions, guide biopsies, and initiate a proper course of treatment for each patient.



S SERIES™

DESIGNED FOR THE POINT OF CARE



Seamlessly archive and store images with DICOM® 3.0 using Ethernet or wireless capabilities

Crisp and clear imaging, featuring SonoHD™ Imaging Technology – with 16x the processing power of our previous generation

Mount your system at the point of care for instant ultrasound access and a zero footprint or use it on a highly manoeuvrable S Series V-Universal™ Stand

Optimise your target with just two controls – one for depth, one for gain

Transducer cable length of up to six feet



5
YEAR

TECHNOLOGY DRIVEN
5-YEAR STANDARD WARRANTY
MADE IN THE USA

To learn more about our products contact us at **01462 444800** or visit **www.sonosite.com/products/s-series**

MAIN FEATURES AT A GLANCE

- Premium image quality
- Drop tested at 91.4 cm/3 feet
- Splash resistant user interface
- Transducers interchangeable with M-Turbo® system
- Quick boot-up time
- Easy to operate



SonoSite Ltd

European Headquarters

Alexander House, 40A Wilbury Way, Hitchin, Herts SG4 0AP, United Kingdom
Tel: +44 1462-444800 Fax: +44 1462-444801 E-mail: europa@sonosite.com

www.sonosite.com/products/s-series

SonoSite Worldwide Offices

SonoSite Australasia Pty Ltd – Australia
– New Zealand

SonoSite – Brazil

SonoSite Canada Inc. – Canada

SonoSite GmbH – Germany

SonoSite Iberica SL – Spain

SonoSite, Inc. – USA

SonoSite India Pvt Ltd – India

SonoSite Italy S.r.l. – Italy

SonoSite KK – Japan

SonoSite Ltd – China – Shanghai

SonoSite SARL – France

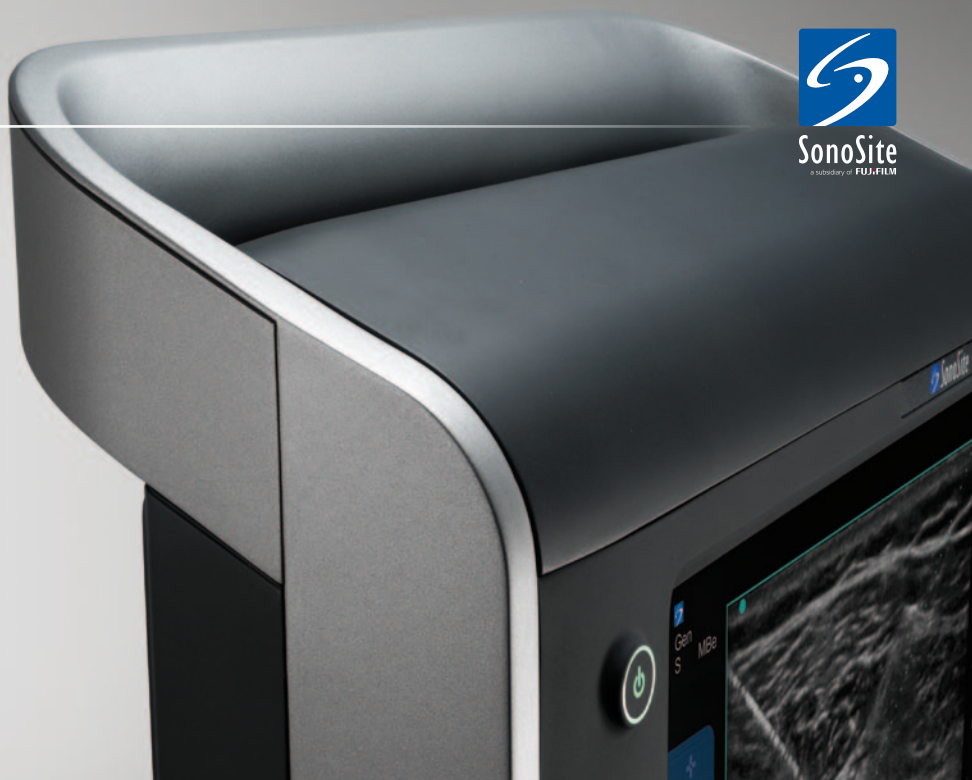
1300-663-516
0800-888-204
+55 61 8118 7100
+1 888-554-5502
+49 91-31-97-79-29-0
+34 91-640-49-11
+1 425 951-1200
+91 124-288-1100
+39 02-98490885
+81 3-5304-5337
+86 21-5239-6693
+33 1-69-18-96-30

S SERIES™

SYSTEM SPECIFICATIONS



THE S SERIES™ ULTRASOUND SYSTEM FROM SONOSITE



SYSTEM SPECIFICATIONS:

System weight	3.8 kg/8.5 lbs.
Dimensions	38.4 cm x 29.5 cm x 15.5 cm /15.1" x 11.6" x 6.1" (H x W x D)
Display	26.4 cm/10.4" diagonal LCD (NTSC or PAL)
Architecture	All-digital broadband
Dynamic range	Up to 165 dB
Gray scale	256 shades
HIPAA compliance	Comprehensive tool set

IMAGING MODES AND PROCESSING:

Broadband, Multifrequency Imaging:

- 2D / Tissue Harmonic Imaging / M-Mode
- Colour Doppler, Colour Power Doppler
- PW, PW Tissue Doppler, and CW

Image processing:

- SonoADAPT™ Tissue Optimisation
- SonoHD™ Imaging
- SonoMB® Multi-beam Imaging
- Enhanced Needle Visualisation (SonoMBe™ Imaging)
- Auto Gain automatic image optimisation
- Dual Imaging

MOUNTING OPTIONS:

Video Electronics Standards Association (VESA®) Mounting:

- (75 mm x 75 mm/2.9" x 2.9")
and (100 mm x 100 mm/3.9" x 3.9")

Optional V-Universal™ Stand:

- Hydraulic height adjustment, shelf for printer or DVD, transducer holder, locking wheels, power supply
- Storage basket with 2 basket hooks, keyboard tray with 4 integrated transducer cups

TRANSDUCERS:

Broadband and Multifrequency:

- Linear Array, Curved Array, Phased Array, Multiplane TEE and Micro-Convex

PREMIUM PACKAGE:

Optional software solution that enables the S Series systems to use all transducers and perform all examination types

USER INTERFACE AND PROGRAMMABLE CONTROLS:

- Track pad with select key for easy operation and navigation
- Image acquisition keys: review, report, Clip Store, DVD, save
- Dedicated AutoGain and exam keys to allow quick activation

ONBOARD IMAGE AND CLIP STORAGE/REVIEW:

- 4 GB internal Flash memory storage capability: Potential to store 25,000 images or 430 2-second clips
- Clip Store capability (maximum single clip length: 60 seconds)
- Cine review up to 255 frame-by-frame images

USB STORAGE FORMATS:

MPEG-4 (H.264), JPEG, BMP and HTML compatible with Mac and PC formats

POWER SUPPLY:

- System operates via battery or AC power
- Rechargeable lithium-ion battery
- AC: universal power adapter, 100-240 VAC, 50/60 Hz input, 15 VDC output





EXTERNAL DATA MANAGEMENT AND WIRELESS:

- 3 USB 2.0 ports, Ethernet port, RS-232
- Digital Video Interface (DVI), S-Video (in/out) and composite video out

DICOM® Image Management (TCP/IP):

- Print and Store
- Multi-Modality Work List Query

Storage Commit:

- Modality Performed Procedure Step
- SiteLink™ Image Manager functionality
- SonoSite® Education Key™ training video compatible
- Wireless DICOM®

MEASUREMENT TOOLS, PICTOGRAMS AND ANNOTATIONS:

- **2D:** Distance calipers, ellipses and manual trace
- **Doppler:** Velocity measurements, pressure half time, auto and manual trace
- **M-Mode:** Distance and time measurements, heart rate calculation
- User-selectable text and pictograms
- User-defined, application-specific annotations
- Biopsy guidelines
- ACO™ (automated cardiac output) calculations

SUPPORTED PERIPHERAL DEVICES:

- B&W video printer
- DVD recorder
- USB keyboard
- USB bar code reader

S Series, SonoSite, the SonoSite logo, and other trademarks not owned by third parties are registered or unregistered intellectual property of SonoSite, Inc., a subsidiary of FUJIFILM.

Mac is a trademark of Apple Inc., registered in the U.S. and other countries.

DICOM is the registered trademark of the National Electrical Manufacturers Association for its standards publications relating to digital communications of medical information.



SonoSite Ltd

European Headquarters
Alexander House, 40A Wilbury Way,
Hitchin, Herts SG4 0AP, United Kingdom
Tel: +44 1462-444800 Fax: +44 1462-444801
E-mail: europe@sonosite.com

www.sonosite.com/products/s-series

SonoSite Worldwide Offices

SonoSite Australasia Pty Ltd – Australia	1300-663-516
– New Zealand	0800-888-204
SonoSite – Brazil	+55 61 8118 7100
SonoSite Canada Inc. – Canada	+1 888-554-5502
SonoSite GmbH – Germany	+49 91-31-97-79-29-0
SonoSite Iberica SL – Spain	+34 91-640-49-11
SonoSite, Inc. – USA	+1 425 951-1200
SonoSite India Pvt Ltd – India	+91 124-288-1100
SonoSite Italy S.r.l. – Italy	+39 02-98490885
SonoSite KK – Japan	+81 3-5304-5337
SonoSite Ltd – China – Shanghai	+86 21-5239-6693
SonoSite SARL – France	+33 1-69-18-96-30

S SERIES™

TRANSDUCERS



**READY FOR
A COMPLETE
RANGE OF
APPLICATIONS**

Both the M-Turbo® and S Series™ system product lines are based on SonoSite's fourth-generation technology and their transducers are interchangeable. Proprietary software algorithms automatically adjust transducers to perform optimally for the specific clinical application of each S Series system product configuration. You get the same razor-sharp image, the same reliability, and the same five-year warranty on all SonoSite-manufactured transducers.



L38xi  10-5MHz Linear Applications: breast CIMT musculoskeletal nerve small parts vascular venous Scan depth: 9 cm	HFL38x  13-6MHz Linear Applications: breast CIMT musculoskeletal nerve small parts vascular venous Scan depth: 6 cm	HFL50x  15-6MHz Linear Applications: breast musculoskeletal nerve small parts Scan depth: 6 cm	L25x  13-6MHz Linear Applications: musculoskeletal nerve superficial vascular venous ophthalmic Scan depth: 6 cm	C11x  8-5MHz Curved Applications: abdominal neonatal nerve vascular cardiology (Vet) Scan depth: 10 cm	C60x  5-2MHz Curved Applications: abdominal musculoskeletal nerve ob gyn Scan depth: 30 cm
ICTx  8-5MHz Curved Applications: ob gyn Scan depth: 13 cm	P21x  5-1MHz Phased Applications: abdominal cardiology ob orbital TCD Scan depth: 35 cm	P10x  8-4MHz Phased Applications: paed. abdominal paed. cardiology neonatal head Scan depth: 14 cm	SLAx  13-6MHz Linear Applications: musculoskeletal nerve superficial vascular venous Scan depth: 6 cm	TOEx/TEE*  8-3MHz Multi Applications: adult cardiology multiplane trans-oesophageal 180° rotation of the imaging plane, providing a 360° field of view Scan depth: 18 cm	

	L38xi	HFL38x	HFL50x	L25x	C11x	C60x	ICTx	P21x	P10x	SLAx	TOEx/TEE*
S-Nerve system	●	●	●	●	●	●				●	●**
S-FAST system	●	●	●	●		●	●	●			●**
S-ICU system	●	●		●	●	●		●	●		●**
S-Cath system	●	●	●	●		●		●	●		●**
S-MSK system	●	●	●	●		●				●	●**
S-Women's Health system	●	●	●			●	●	●			●**

* Available with the S Series system Premier Transducer Package software upgrade. **Note: S Series system Premier Transducer Package.

Needle guide kits available with the following transducers – L38xi, HFL38x, HFL50x, C60x, ICTx, P10x, and P21x. A transverse needle guide is available with the L25x transducer.

For detailed information, please visit www.sonosite.com/products/s-series, or speak with your SonoSite customer representative.

S Series, SonoSite, the SonoSite logo, and other trademarks not owned by third parties are registered or unregistered intellectual property of SonoSite, Inc., a subsidiary of FUJIFILM.



SonoSite Ltd
European Headquarters
Alexander House, 40A Wilbury Way, Hitchin, Herts SG4 0AP, United Kingdom
Tel: +44 1462-444800 Fax: +44 1462-444801 E-mail: europe@sonosite.com

www.sonosite.com/products/s-series

SonoSite Worldwide Offices
SonoSite Australasia Pty Ltd – Australia
– New Zealand
SonoSite – Brazil
SonoSite Canada Inc. – Canada
SonoSite GmbH – Germany
SonoSite Iberica SL – Spain
SonoSite, Inc. – USA
SonoSite India Pvt Ltd – India
SonoSite Italy S.r.l. – Italy
SonoSite KK – Japan
SonoSite Ltd – China – Shanghai
SonoSite SARL – France

1300-663-516
0800-888-204
+55 61 8118 7100
+1 888-554-5502
+49 91-31-97-79-29-0
+34 91-640-49-11
+1 425 951-1200
+91 124-288-1100
+39 02-98490885
+81 3-5304-5337
+86 21-5239-6693
+33 1-69-18-96-30

