



Making lifesaving faster, easier, better for professional responders

Philips HeartStart FR3 Defibrillator supplies and accessories

PHILIPS

Carry cases



Philips Rigid System Case

Item # 989803149971

The Philips Rigid System Case is designed for environments like Fire, EMS, military and heavy industry, or anywhere aggressive use is expected. It's made of very durable plastic, and will protect FR3 and its accessories in demanding applications. A Pads Sentry (989803150011) is included so SMART Pads III can be tested and stored for fast deployment. The Auto-on feature enables FR3 to power up when the carry case lid is opened. The FR3 Fast Response Kit (989803150111) fits conveniently in the lid of the case. There are specific storage places for optional accessories such as, spare pads, a spare battery, CPR meter and the Infant/Child key. The FR3's flashing Green Ready Light can be easily seen through the clear window without having to open the case.

Dimensions:

13.2" (33.5cm) w, 10.3" (26.2cm) h, 5.2" (13.2cm) d, including handle



Philips Soft System Case

Item # 989803179161

The Philips Soft System Case is lightweight and medium sized, and allows room for a spare battery, spare pads, and an optional Infant/Child Key. This case is intended for environments where the defibrillator is protected from excessive moisture and harsh treatment. A Pads Sentry (989803150011) is included so SMART Pads III can be tested and stored for fast deployment. The FR3's flashing Green Ready Light can be easily seen through the clear window without having to open the case.

Dimensions:

10.15" (28.8cm) w, 9.1" (23.1cm) h, 4.86" (12.3cm) d



Philips Small Soft Case

Item # 989803179181

The Philips Small Soft Case for the HeartStart FR3 is for when ultimate portability is essential. It's small, lightweight design makes it ideal for applications where size and weight attributes are among the top criteria for decision makers. This case is intended for environments where the defibrillator is protected from excessive moisture and harsh treatment. A Pads Sentry (989803150011) is included so SMART Pads III can be tested and stored for fast deployment. The FR3 carry case has room for a spare set of pads and a place for the optional Infant/Child Key. The FR3's flashing Green Ready Light can be easily seen through the clear window without having to open the case.

Dimensions:

4.8" (12.2cm) w, 9.9" (25.1cm) h, 7.7" (19.5cm) d

FR3-series cross-product compatibility



Permanent configuration

Removable configuration

Adapter Model 05-10200

Fits Philips hands-free cables M3507A or M1750A/B for connection to Hewlett-Packard CodeMaster 100, XE, XL, and XL+; Philips Heartstream/HeartStart XL and XLT; HeartStart MRx and Laerdal HeartStart 4000 defibrillator/monitors.



Adapter Model 05-10000

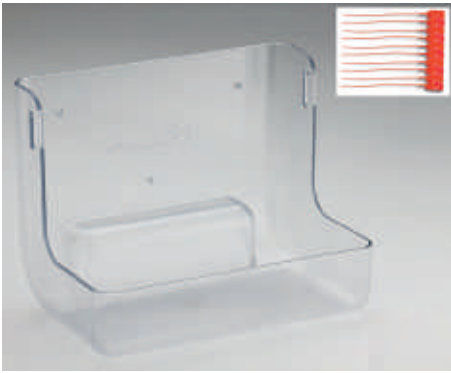
Removable adapter for Medtronic Physio-Control Quik-Combo LifePak 9, 10C, 11, 12, 20, and 500 defibrillators.



Adapter Model 05-10100

Removable adapter for Zoll 1200, 1400, 1600 and M-Series defibrillators.

Wall mounting solutions and signage



Wall Mount Bracket

Item # 989803170891

The Wall Mount Bracket is designed specifically for housing a Philips HeartStart defibrillator and its accessories. The defibrillator's carry case can be tethered to the Wall Mount Bracket with a breakaway Secure-Pull Seal (M3859A) to discourage tampering. A broken seal indicates that the defibrillator has been removed from the Wall Mount and accessories may need to be replenished. The Fast Response Kit (68-pchat) tucks neatly behind the Defibrillator Case.

Dimensions:

10.5" (27cm) w, 8" (20cm) h, 6.9" (17cm) d
Weight: 18.4 ounces (0.52 kg)



Basic Surface Mounted Cabinet

Item # 989803136531

Dimensions:

16.5" (42cm) w, 15" (38cm) h, 6" (15cm) d



AED Awareness Placard

Item # 989803170901 (Red)

Item # 989803170911 (Green)

Raise AED awareness by putting an AED Awareness Placard above every AED located in a public area. Easy-to-understand graphics raise awareness of passers-by about how to use an AED in an emergency. Great for office settings, sports clubs, public facilities, school settings and more.

Dimensions:

10.25" (26cm) w, 4.5" (11cm) h



Premium Surface Mounted Cabinet

Item # PFE7024D

Dimensions:

16" (41cm) w, 22.5" (57cm) h, 6" (15cm) d



AED Wall Sign

Item # 989803170921 (Red)

Item # 989803170931 (Green)

An AED Wall Sign hanging above a Wall Mount Bracket or Defibrillator Cabinet gives even greater visibility to the defibrillator. Can be mounted three different ways to maximize visibility: T-mount, V-mount or Corner Mount.

Face dimensions:

9" (23cm) h, 6.1" (15cm) d



Premium Semi-recessed Cabinet

Item # PFE7023D

Dimensions:

Recessed Compartment
14" (36cm) w, 22" (56cm) h, 6" (15cm) d

Footprint on wall

16.5" (42cm) w, 24.5" (62cm) h, 2.5" (6cm) d

Accessories*



Philips CPR Meter with Q-CPR technology by Laerdal

Item # 989803149941*

For use with FR3 Text (861388) and ECG (861389) models with PR2.0 or higher software. Includes CPR Meter, cable link, CPR meter cradle for rigid case, 10-pack of patient adhesives and localized user documentation. Provides real-time feedback in CPR in accordance with current CPR Guidelines. Meter displays CPR feedback and correction for depth, release and rate of chest compressions using visual indicators as guidance, and visual notification for lack of expected CPR activity. Prompts responders when hyperventilation is detected. Records comprehensive CPR data for retrospective review when used with a Philips FR3 data card and HeartStart Event Review or HeartStart Event Review Pro software. Interchangeable during patient hand-off to a Philips MRx Monitor Defibrillator equipped with Q-CPR technology.

CPR meter patient adhesives, 10 pack

Item # 989803163291



3-Lead ECG Cable

Item # 989803150051 (IEC)*

Item # 989803150041 (AAMI)*

For use with FR3 with ECG (model 861389) with PR2.0 or higher software. Includes 3-Lead ECG cable, storage bag and localized documentation. Provides a non-diagnostic ECG display of the patient's heart rhythm during attended monitoring on a conscious or breathing patient for rhythm assessment. Selectable Lead I, II or III for optimized view. Evaluates the patient's ECG and provides prompts to attached the defibrillation pads if needed, displaying heart rate and elapsed time on the FR3 screen. Event Mark feature allows events to be marked for retrospective review using a Philips FR3 data card and HeartStart Event Review or HeartStart Event Review Pro software. Compatible with a wide range of electrodes. Available in IEC and AHA color codes. Philips recommended ECG electrodes item # 989803137771



HeartStart Adult Pads (FR2 style pads)

1 set item # 989803158211

5 sets item # 989803158221

Designed for use with HeartStart FR2 but can be used with HeartStart FR3. **Not pre-connectable. Pads must remain in packaging until needed.**



SMART Pads III

1 set item # 989803149981

5 sets item # 989803149991

SMART Pads III have been streamlined for fast deployment. The time-consuming steps of removing the pads packaging during the initial stages of the response has been eliminated. Also, they can be used on both adults and children (with optional Infant/Child key) so there's no time wasted changing pad sets. Offset tabs enable a peel-and-place workflow that is easier and faster to use. When used with a Philips FR3 carrying case equipped with a Pads Sentry, SMART Pads III can be pre connected and they will be tested during FR3's routine self-tests. The multifunction SMART Pads III connector is compatible with HeartStart manual defibrillators, and can be used for ECG monitoring, external pacing, and synchronized cardioversion as well as defibrillation.



Infant/Child Key

Item # 989803150031

The FR3 Infant/Child Key with tether is designed for use with the HeartStart FR3 Defibrillator when treating an infant or child who is under 55 lbs (25kgs) or 8 years old. Once the Infant/Child Key is inserted, the FR3 automatically reduces the defibrillation therapy to an appropriate level for children. Prescription required.

Accessories (continued)



Primary battery

Item # 989803150161

FR3 primary battery is a Lithium manganese dioxide disposable battery. 5 year shelf-life, Typically 300 shocks, or up to 12 hours of monitoring time.



Data card

Item # 989803150061

Stores 8 hours of ECG, patient event data, and including 8 hours of voice recording (if desired) for download and retrospective review.



Fast Response Kit for FR3 Rigid System Case

Item # 989803150111

The FR3 Fast Response Kit includes 2 pairs of gloves, an adult pocket mask, paramedic scissors, prep razor, and a large paper towel. These items are enclosed in a durable plastic housing that's been designed to fit conveniently inside the lid of the Philips Rigid System Case (989803149971).



Rechargeable battery

Item # 989803150241*

FR3 rechargeable battery is a Lithium ion rechargeable battery for use with FR3 Text (861388) and ECG (861389) models with PR2.0 or higher software. Battery cycle life of 300 charge/discharge cycles. Fully recharges in 3 hours. Provides 100 shocks or up to 3.5 hours of monitoring time between charging. For use with the Philips battery charger (861394).



Pads Sentry

Item # 989803150011

The Pads Sentry is designed for use in the Philips FR3 carry cases, and provides support for the fast response features available on the Philips SMART Pads III. Once the pouch has been removed from SMART Pads III, they can be inserted into the Pads Sentry making them ready for fast deployment. The Pads Sentry also enables SMART Pads III to be tested when FR3 does its routine self-tests. A Pads Sentry is included with the FR3 Rigid and Soft Cases, but can be ordered separately as a spare.

Dimensions:

4.8" (12.1cm) w, 7.75" (19.7cm) h, 1.6" (4.0cm) d



Bluetooth® transceiver module

Item # 989803150081

Enables the Philips HeartStart FR3 to transmit event data to a computer equipped with HeartStart Data Messenger and HeartStart Event Review, Event Review Pro or HeartStart Configure. FR3 protocol configurations settings can be changed and FR3's internal clock can be synchronized with another clock.

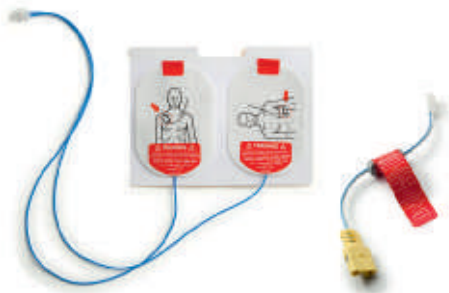


Battery Charger

Item # 861394

Charger for use with FR3 rechargeable (989803150191) training battery and the rechargeable clinical use battery (989803150241). Includes power cord.

Training tools



Replacement Training Pads III

Item # 989803150181

Interconnect cable, Training Pads III

Item # 989803150201

Training Pads III are a combination of two parts, each available separately: Replacement Training Pads III (989803150181), shown above left, typically provide 100 uses. They require the Interconnect cable for Replacement Training Pads III (989803150201), shown above right, and are designed to outlast several Replacement Training pads III.



HeartStart FR3 Training Pack

Item # 989803150191

Provides 4 simulation scenarios, including Life ECG mode to help responders become familiar with operating the FR3. The Training Pack includes the training battery, a set of Replacement Training Pads III, an Interconnect cable for Replacement Training Pads III, and an external manikin adapter. These reusable, optional accessories are designed for use with the FR3 for demonstration and training applications. The FR3 training battery is rechargeable using the 861394 battery charger only. Replacement training pads can be ordered separately. The interconnect cable is intended for indefinite reuse, but can be ordered separately.



AED Trainer 3

Item # 861467 A01

Designed to help prepare emergency responders to use the HeartStart FR3 and other AEDs. Together with appropriate manikins and other training tools, the AED Trainer 3 is intended to help provide realistic training on delivering correct treatment, including shock delivery and CPR, to a cardiac arrest victim.

The AED Trainer 3 provides 8 training scenarios that simulate realistic episodes of sudden cardiac arrest (SCA) and help responders become familiar with use of the HeartStart FR3 AED.

Like the HeartStart FR3 AED, the AED Trainer 3 can be prepared with its training pads pre-connected and out of their packaging ready for fast deployment. Includes Training Pads III and a reusable interconnect cable.

There's no need to change the pads for children. The AED Trainer 3 comes with a Training Infant/Child Key to replicate the infant/child mode of the FR3 AED.

The AED Trainer 3 guides you through each step of the training scenario with the same voice prompts as the FR3 AED.

Like the FR3 AED, the AED Trainer 3 configuration can be customized and its operation easily updated. Included languages: English (UK/US), Japanese, French, Italian, German, Spanish, Norwegian, Dutch, Swedish, Finnish, Portuguese, Korean, Chinese (Mandarin, Cantonese, Taiwanese).



Remote Control, AED Trainer 3 (optional)

Item # 989803171631

Gives instructors the ability to quickly override the AED Trainer 3 at any moment providing the means to test how students respond to a variety of situations.

External Manikin Adapter (box of 5)

Item # M5089A

A manikin adapter is used for training purposes with the Philips HeartStart FR3 AED and training battery and training pads or with Philips AED Trainer 3. A manikin adapter enables the AED training electrode pads to function properly during training simulations.

Data management

The HeartStart FR3 and Philips Data Management Solutions are designed to help support a culture of continuous improvement and excellence among emergency response organizations. Having data readily available can help facilitate retrospective review by medical directors and training managers so that timely and consistent feedback can be provided to responders while the event is still fresh. Medical directors can also use the data to refine their cardiac arrest response protocols.

HeartStart Configure

Item # 861487

HeartStart Configure software lets you review and change the configuration of your HeartStart FR3, FRx, and HS1 defibrillators on a personal computer. With a few single-click commands, you can retrieve the current configuration from your defibrillator, reset the configuration to default values or revise individual settings according to your medical director's preferred response protocol, and update your AED.

You can save the configuration settings to a file within HeartStart Configure. This makes it easy to use the same configuration on all your AEDs and maintain a record of selected settings.

With FR3, you can set the language, including bilingual primary and secondary languages. You can set the device internal clock setting via FR3 Bluetooth module.

Note: a defibrillator's configuration determines its behavior during a medical emergency.

HeartStart Data Messenger

Item # PN 861451 Opt A01 (single PC)
or PN 861451 Opt A03 (site-wide license)

HeartStart Data Messenger software lets you download, view, report, store, and send Philips defibrillator data where it needs to go.

You can forward patient data to your medical director or data administrator for retrospective response analysis. Forward the event report as a PDF or as a case for reporting into Event Review Pro.

For EMS and fire departments, Data Messenger is particularly suited for use in the station or on the street in order to send the patient data to headquarters.

HeartStart Event Review

Item # 861489 Option A01 (single PC)
or 861489 Option A02 (site-wide license)

Review, annotate, print, and store AED cases in a database for retrospective review and responder debriefing.

HeartStart Event Review Pro

Item # 861431 Option A01 (single PC)
or 861431 Option A03 (site-wide license)

Event Review Pro is our comprehensive case management tool for the most demanding data managers and medical directors. It includes even more detailed data entry screens to record every aspect of the response, including detailed response times, interventions, and patient observations. In addition to the individual case reports, you get Utstein reporting and graphical summaries of your system's overall response times to help you manage your service levels more efficiently.

Philips Data Software Development Kit

Item # 989803144651

Append a defibrillator patient event to any electronic patient care reporting system (ePCR) enabled with the Philips Data Software Development Kit.

* Not all items are available worldwide. Check with Philips for availability of optional software and accessories.

Changes to default values should be done only by authorized personnel under the oversight of a medical professional. Purchase requires a prescription.

ECG viewing is intended only for basic rhythm identification. It is not for diagnostic or ST segment interpretation.

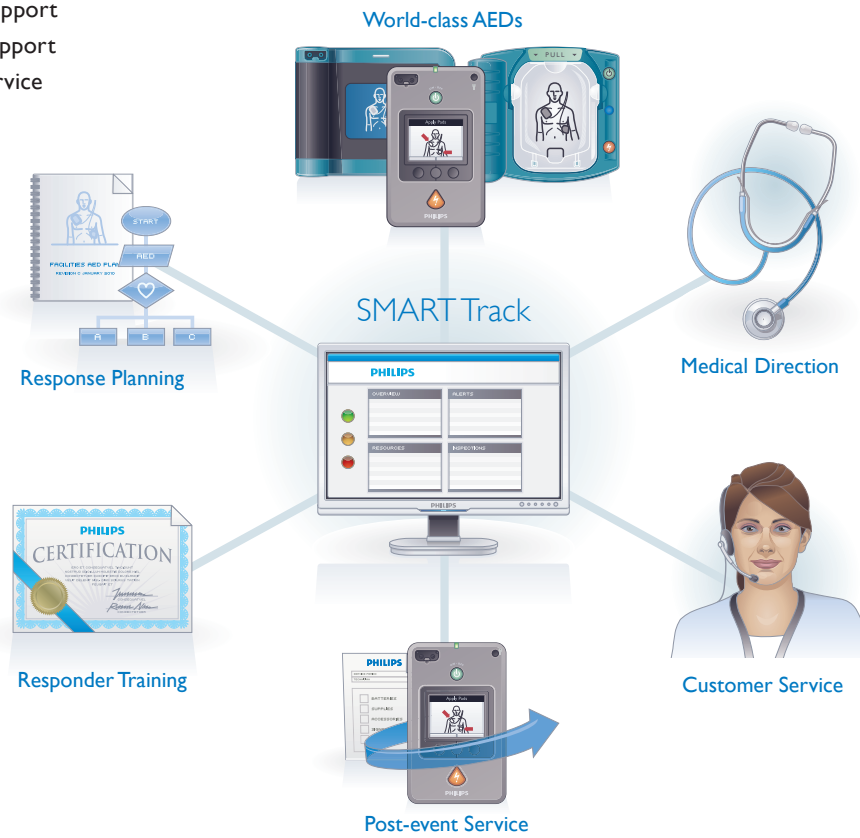
The Bluetooth® word mark and logos are registered trademarks owned by Bluetooth SIG, Inc. and any use of such marks by Philips Medical Systems is under license. Koninklijke Philips Electronics, N.V., is an Associate Member of the Bluetooth SIG.

Philips HeartStart FR3 requires a prescription in the United States and medical direction.

HeadStart AED Services

We provide management tools and resources to support the needs of your AED program. Whatever your needs, we will work with you to find the services that are right for your situation. We can help you seamlessly manage important components of your AED program, including:

- SMART Track online program management
- Medical direction
- Training
- Maintenance
- Regulatory support
- Post-event support
- Customer service



Please visit www.philips.com/



© 2015 Koninklijke Philips Electronics N.V.
All rights are reserved.

Philips Healthcare reserves the right to make changes in specifications and/or to discontinue any product at any time without notice or obligation and will not be liable for any consequences resulting from the use of this publication.

Philips Healthcare is part of Royal Philips Electronics

www.philips.com/healthcare
healthcare@philips.com

Printed in The Netherlands
4522 962 91341 * MAR 2013