

Advanced. Versatile. Different.



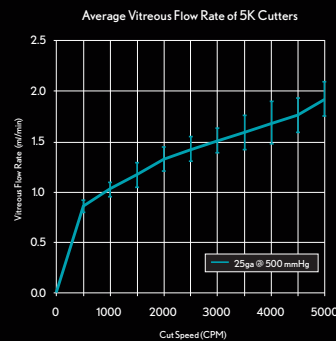
**BAUSCH + LOMB**

**Stellaris<sup>®</sup> PC**  
Vision Enhancement System

The Stellaris PC is a high-performance feature rich combined platform that leverages Bausch + Lomb's history in retinal innovation to change the surgical landscape by delivering the ultimate in **Procedural Choice**.

## Advanced.

Technology that makes a difference.



### Efficient Vitrectomy

- > 5000 cpm designed to reduce traction and turbulence
- > Port located close to cutter tip for controlled tissue removal

### Stable Fluidics

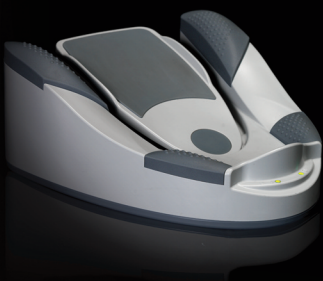
- > Optimized duty cycle for built-in flow efficiency
- > Auto infusion allows surgeon to toggle on/off the BSS

### Optimized Visualization

- > Dual independent lamps (Xenon and Mercury)
- > 3 surgeon controlled filters for increased safety and differentiated viewing

### New ESA Technology

- > Enhanced blade design for easier insertion
- > Excellent cannula retention in the eye
- > Trocar tip designed to make tighter Sclerotomy's

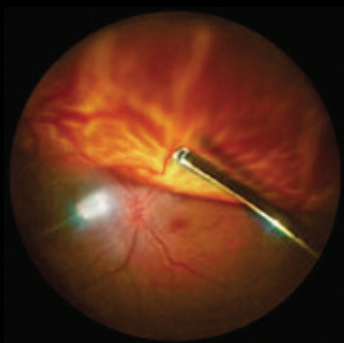


### Dual-Linear Technology

- > Simultaneous parameter access allows better surgeon control
- > Adds useful functionality requiring fewer mode changes
- > Wireless foot pedal eliminates cord clutter

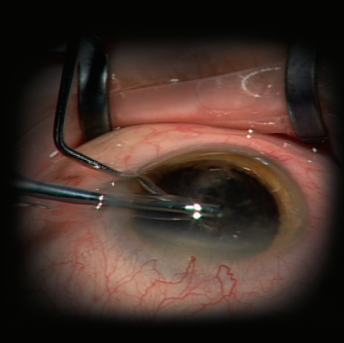
## Versatile.

Procedural Choice with  
TSV and MICS.



### Procedure Choice

- > Select vitrectomy, phaco, or combined procedures
- > Full flexibility with 20, 23, and 25 gauge packs



### Phaco That is Safe and Efficient

- > Easy transition to MICS 1.8 technology
- > Attune Energy Management System self-adjusts to maintain smooth performance
- > Exceptional safety with stable chamber fluidics

## Different.

Simplicity and  
surgeon control.



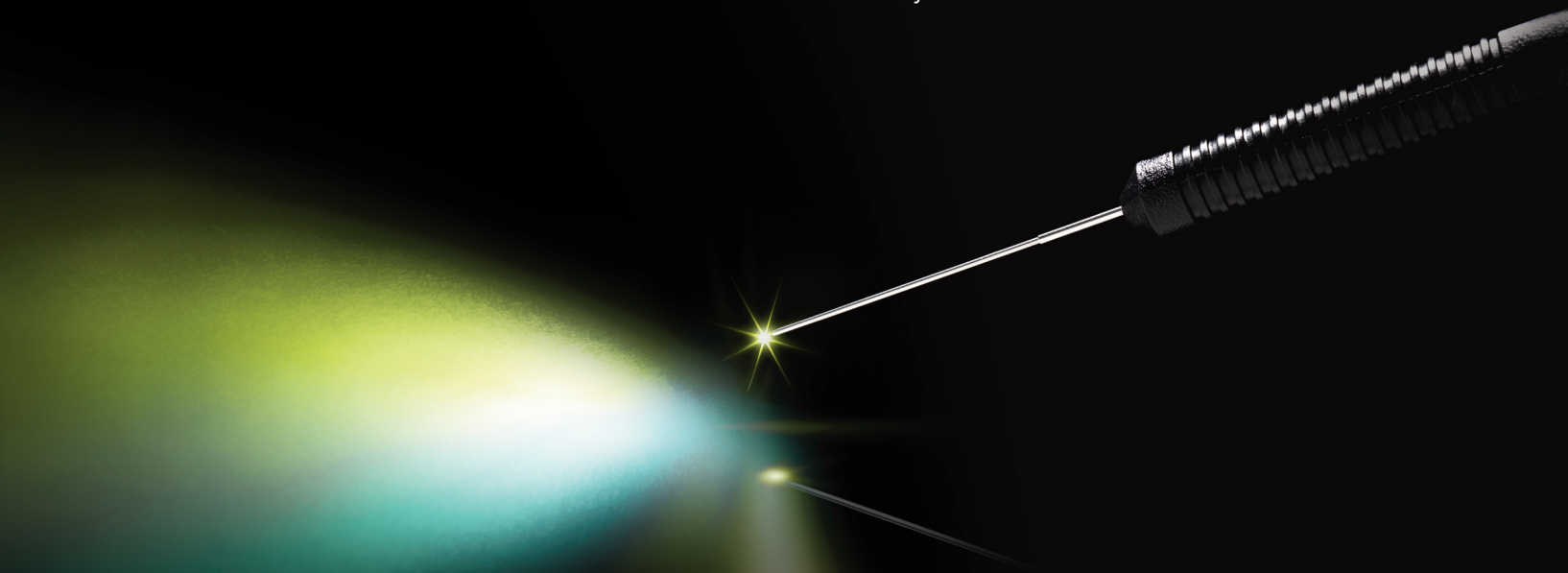
### Simple, Logical Human Factors

- > Pre-assembled packs with one step priming (<60 seconds)
- > One pack, one interface reduces steps in O.R.
- > Simple transition from phaco to vitrectomy increases efficiency



### Designed to Fit Your Needs

- > Sleek footprint maximizes space in the O.R.
- > Tru-link offers rapid communication with technical assistance



# Stellaris PC, Packs and VR Accessories.

## Stellaris PC Hardware

SKU	Description
BL1433	Stellaris PC Combined System with 1 Xenon + 1 Mercury Lamp Assbly
BL3270	Fragmentation Handpiece
BL3320	Xenon Lamp Replacement
BL3321	Mercury Lamp Replacement
BL2393	Stellaris PC Foot Pedal
BL4363	Stellaris PC Zero Level Bottle Hanger - Dual Bottle
BL4360	Stellaris PC/Stellaris Mayo Tray Adapter
BL3251	Stellaris PC User Manual on CD (all languages)

## Stellaris PC Procedural Packs (6/Box)

SKU	Description
BL5275	20 GA. Fragmentation Needle 15 deg single use
BL5420	20 GA. Posterior Procedural Pack includes Integrated Vented AFI
BL5423	23 GA. Posterior Procedural Pack includes Integrated Vented AFI
BL5425	25 GA. Posterior Procedural Pack includes Integrated Vented AFI
BL5520	20 GA. Combined Procedural Pack includes Integrated Vented AFI
BL5523	23 GA. Combined Procedural Pack includes Integrated Vented AFI
BL5525	25 GA. Combined Procedural Pack includes Integrated Vented AFI
BL5612	20 GA. High Speed (30-5000cpm) Anterior Vitrectomy Cutter Pack

## Stellaris Packs – Compatible with Stellaris PC (6/Box)

SKU	Description
BL5110	Stellaris Premium Vacuum Phacoemulsification Pack
BL5111	Stellaris Vacuum Phaco Pack
BL5112	Stellaris Optimized Stability Vacuum Pack
BL5113	Stellaris StableChamber™ Phaco Pack with MICS needle
BL5113A	Stellaris StableChamber™ Phaco Pack with MICS angled needle
BL5114	Stellaris Premium Vacuum Phaco Pack with MICS needle
BL5114A	Stellaris Premium Vacuum Phaco Pack with MICS angled needle

## Stellaris Accessories – Compatible with Stellaris PC

SKU	Description
BL3170	Stellaris Phaco Handpiece
BL4390	Foot Control Battery
BL4391	Foot Control Wall Charger
BL4392US	Foot Control Charging Adapter US
BL4393	Foot Control Charging Cradle
BL4394	Foot Control Power Cable

## Vitreoretinal Specialty Products

SKU	Description
E55000S	Adato Sil-Oil 5000 Centistoke Oil
TR9088	10 Dose Cylinder of SF6
TR9089	10 Dose Cylinder of C3F8
TR9060	Universal Gas Kit
TR9066	Cylinder Tank Stand
TR9085	Standard Gas Regulator
CX5710	Viscous Fluid Extraction Kits
CX5720	Viscous Fluid Injection Kits

## Vitreoretinal Instruments

SKU	Description
65023S	23G Single Use Endgripping VR Forceps (Bx/6)
65025S	25G Single Use Endgripping Forceps (Bx/6)
65024S	23G Single Use Endgripping VR Forceps (Bx/2)
65026S	25G Single Use Endgripping Forceps (Bx/2)
MVS1046	Plug Removal Forceps
E2424	Stabilizing Plate
E0524 23G	23G Reusable Backflush Cannula
E0524 25G	25G Reusable Backflush Cannula
E7925	25G Bipolar Eraser, Blunt 2 pin
E7924	25G Bipolar Eraser, Tapered 2 pin
E7918	18G Bipolar Pencil, Straight
E7918C	18G Bipolar Pencil, Curved
E7923	20G Bipolar Pencil, Tapered Tip
S2050B	Reusable Bipolar Cord with Banana Plugs
CX9400	Reusable Bipolar Cord with 2 Pin Connector
CX9430	Reusable Bipolar Cord with Lemo Connector
CX9404	Banana Plug Adapter
E7525	25G MVR Blade
E5000	20G Reusable Soft Tip Aspiring Cannula
BL7823	23G Soft Tip Cannula
BL7725	25G Soft Tip Cannula

**Stellaris PC.** Contact your local B+L representative to arrange a demonstration.  
[www.stellarispc.com](http://www.stellarispc.com)

**BAUSCH + LOMB**

Stellaris is a registered trademark of Bausch & Lomb Incorporated  
© Bausch & Lomb SU6162