

560 SERIES High Definition Camera System



The defining moment in broadcast quality high definition has arrived.

The complete end-to-end, high definition surgical camera system.



The power of broadcast quality, pure HD imaging is now available for endoscopic surgery

Now there is a surgical camera system that meets the high definition television (HDTV) benchmark: the Smith & Nephew 560 Series High Definition Camera.

So what is high definition?

The Advanced Television Systems Committee (ATSC), an international non-profit organization that develops voluntary standards for digital television, defines the standard for HDTV as follows:

Aspect Ratio

Must be capable of displaying wide screen 16:9 format. Standard definition television (SDTV) has a 4:3 aspect ratio.

Pixel Quantity

Meets or exceeds 1920 x 1080i or 1280 x 720p

Scanning Pattern

1080i (interlaced scan) or 720p (progressive scan)

It's here: The complete end-to-end HD camera system for all surgical endoscopy specialties



The Smith & Nephew 560H High Definition Camera is the real deal, meeting the ATSC broadcast standards for HDTV across the entire imaging platform. To be considered true HD, the digital image data must be kept in the HDTV format throughout all components of the camera system – including the optics, camera head, CCU and monitor.

Native HD image data acquired by the 560H camera is conveyed to the CCU via high speed digital interface, where the image data are processed and delivered in HDTV images, which are then displayed on a flat panel HD monitor.



Vivid color reproduction, greater depth-of-field and noise-free images help you capture more clinical data

With our all-HD camera system, you'll see an extremely high-resolution and virtually distortion-free image. Colors look more realistic, with greater depth-of-field due to the wider bandwidth. It provides a level of image quality never before possible.

Unprecedented anatomical color

Presents details previously unseen with standard definition surgical cameras

Increased depth-of-field

Substantially reduces the need to refocus

Professional broadcast technology standards

Yield professional image quality

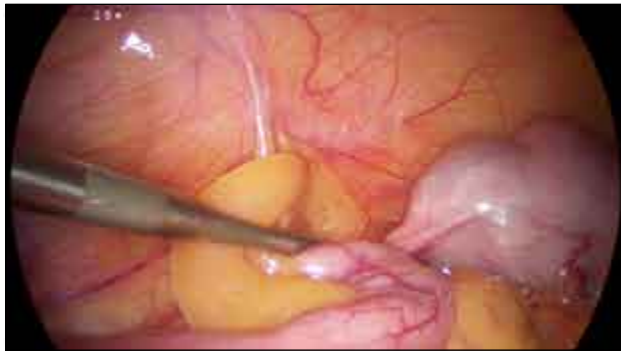
Increased pixel density

Provides greater zoom capabilities without degradation

Multispecialty capability

Makes broadcast quality HD imaging available for all endosurgery specialties

Seeing is believing: The images speak for themselves



GENERAL SURGERY



ORTHOPEDICS



OB/GYN

Smith & Nephew 560 SYSTEM Camera Head

- Uses high definition 3-CCD (Charge-Coupled Device) array to acquire HDTV image data
- Breakthrough micro-electronic technology allows advanced ergonomic design
- 3-button, 6-function interface controls image and remote operation of compatible peripheral devices like CCU's, printers, and Smith & Nephew image management systems

Smith & Nephew 560 SYSTEM Camera Control Unit (CCU)

- Powerful and usable menu options
- Broadcast quality Imaging through all surgical specialties
- 8 customizable options for surgeon specific needs
- Professional broadcast technology handles 5 times more information than standard definition

Smith & Nephew 560 SYSTEM Flat Panel Monitor

- Displays high definition in 1920 x 1080i resolution and clarity
- Outputs image 16:9 format or traditional 4:3 format
- Displays HD images when used with the Smith & Nephew 560 Series Camera System
- Lightweight display for superior flexibility



A family of high definition visualization products from **smith&nephew**



560H Camera Head

The Smith & Nephew 560H High Definition Camera Head is compatible with a complete line of direct-view endoscopes, video endoscopes and the 560P High Definition Camera Control Unit (CCU). The 3-button, 6-function design allows for remote control of compatible peripheral devices like the CCU, printers, and image management systems. The Smith & Nephew 560H digital 3-CCD high definition camera head is engineered for reliability and image quality.



560P Camera Control Unit

The Smith & Nephew 560P High Definition Camera Control Unit provides for exceptional image quality and versatility for endoscopic procedures in all OR settings. This new HD CCU will meet your multi-specialty needs by providing customizable image optimization and programmability. The 560P offers the latest in high definition digital processing of the native 1920 x 1080i image, and includes all new HD-DVI, HD-SDI and YPrPb outputs to maximize image resolution.



560 Flat Panels

Smith & Nephew widescreen flat panel displays are optimized for use with the 560 Series High Definition Camera System and are an integral part of the high definition "end to end" concept. The ultra high resolution, widescreen designs are built specifically for true high definition viewing. Their slim design and light weight also make the LCD's highly maneuverable in any OR environment.



Endoscopes and Couplers

Smith & Nephew high resolution optics feature stainless steel construction with the ability to withstand steam and chemical sterilization modalities (Autoclave, EtO, Steris®, Sterrad®). They are all fully autoclavable with unique lens soldering design for longevity. All autoclavable endoscopes have sapphire distal lenses and rear ocular windows for much greater scratch resistance than conventional glass. The superior optical quality is the perfect partner for Smith & Nephew's family of high definition camera system products.



AGILE-CARE[®] Services

From the first day of ownership, Smith & Nephew AGILE-CARE Services protects your HD investment. Only Smith & Nephew has the proprietary parts and knowledge to maintain your HD products to their original performance specifications. Smith & Nephew offers 24 hour product exchanges, field service technicians and world-class technical phone support to maximize your OR productivity!

The 560 Series: the only definition that matters.

