

SONY



UP-DR80MD

Digital Color Printer, 2016 version

For high-quality, full-page color prints with a compatible wireless printing option

For outstanding image quality and accurate color reproduction with a wireless printing option.

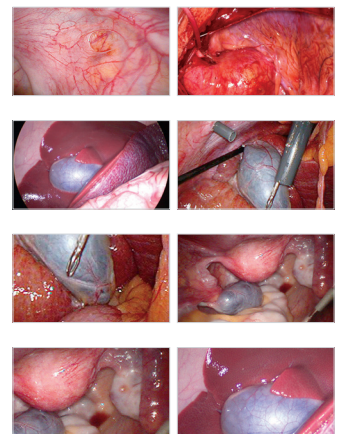
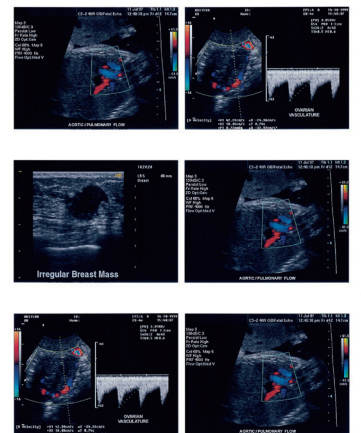
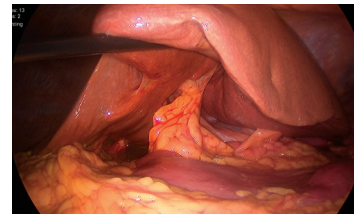


If your practice is like most, you depend more and more on your color printer for outstanding image quality, reliability and a favorable long-term cost of ownership. This combination is critically important for evaluation, records and your investments' durability to last. Now Sony's updated 2016 version, medical-grade, digital UP-DR80MD color printer not only supplies those high-quality prints, but also is compatible with a convenient wireless option that adds flexibility to your workflow.

The UP-DR80MD printer, which prints in A4 and letter sizes, uses Sony's dye sublimation technology to produce images that are not only crystal-clear but also highly durable. And its high-speed printing operation can handle the demand for clean, full-color images quickly and efficiently.

And with the addition of a port for the optional UPA-WU10 Wireless Print System, you can connect the printer wirelessly to a medical imaging modality without a lengthy USB cable, freeing up valuable space.

Ideal for a variety of medical imaging needs



Note: Simulated Images.

Features

Superb print quality

Incorporating Sony's dye sublimation technology, the UP-DR80MD printer produces photo-quality prints. Sony's laminating technology coats each print with a protective layer that's resistant to light, heat, water, humidity, and fingerprints, all of which work to break down print quality over time. This protection allows the prints to last in long-term storage with minimal image degradation. The UP-DR80MD can produce prints of two sizes: A4 (11 3/4" x 8 3/8") and letter (11" x 8 1/2").

Efficient design and size

The glossy white surface of this printer is easy to wipe clean. Its compact body, approximately 12 1/2" W x 8 3/8" H x 16 3/4" D, enables it to fit easily into small spaces and medical carts.

Wireless printing capability*

Using the UP-DR80MD printer with the optional UPA-WU10 Wireless Print System provides a cable-free connection to surgical endoscopes, ultrasound systems, and other hospital imaging modalities with compatible wireless capability. This is ideal for busy clinical environments where modalities are constantly being moved between different O.R. and treatment rooms. This all-in-one printing solution also resolves the problem of limited space on medical carts, allowing wireless connection between a medical imaging modality and an "off-cart" printer without requiring a lengthy USB cable.

High-speed printing

With the UP-DR80MD's high-speed operation, printing an A4-size image takes about 76 seconds, while a letter-size image takes about 72 seconds.

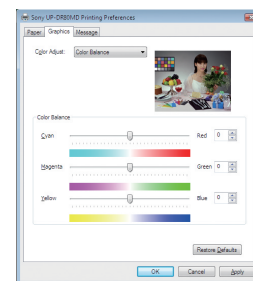
Useful front operation

The front-loading operation makes it easy to replace paper and ribbons and allows the UP-DR80MD to be installed on a surgical cart or in tight spaces.



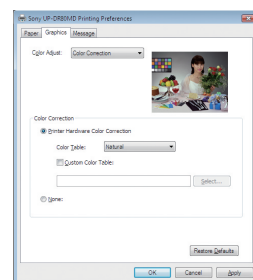
Easy color adjustment

Via the printer drive property, the UP-DR80MD offers easy color adjustment. This incorporates a preview image for easy confirmation and adjustment.



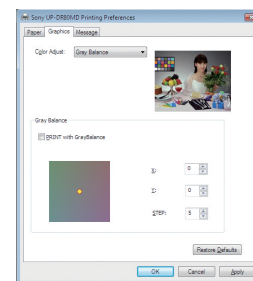
Color look-up table

Two types of selectable color look-up tables are available to reproduce suitable colors for different modalities. The default "Natural" setting creates color based on the s-RGB monitor, which is suitable for endoscopy images. For ultrasound images, a "CG" color mode reproduces more vivid colors.

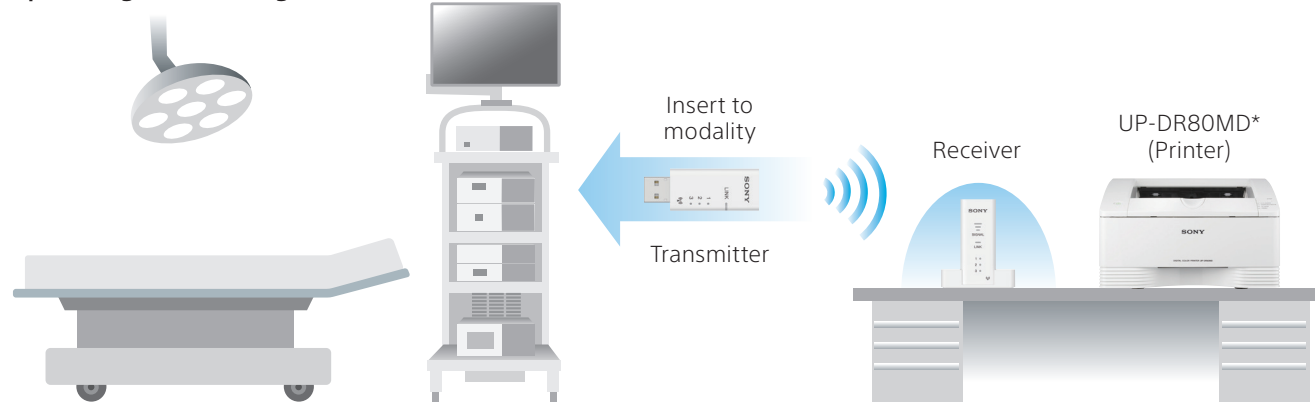


Gray balance adjustment

A Gray Balance Adjustment function allows you to easily select the color that most closely matches your requirements and provides the most suitable tonal range for your application.



Operating Room Usage



*Sold separately. UPA-WU10 wireless print system accessory is currently available for UP-DR80MD printers, manufactured in September of 2016 or later, with serial numbers 712500 and above.

Specifications

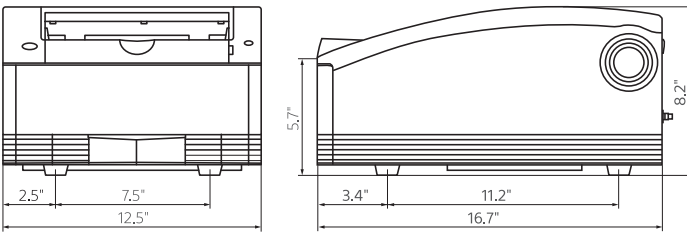
UP-DR80MD	
Printing Method	Dye Sublimation Thermal Printing
Resolution	301 dpi
Gradations	8 bits (256 levels) processing each for yellow, magenta and cyan
Effective Print Pixels	Letter size UPC-R81MD: 3192 x 2464 dots A4 size UPC-R80MD: 3400 x 2392 dots
Print Size	Letter size: 10 5/8 x 8 1/4 inches (269 x 208 mm) A4 size: 11 1/4 x 8 inches (287 x 202 mm)
Printing Time	Letter size: Approx. 72 sec A4 size: Approx. 76 sec
Interface	Hi-Speed USB (USB 2.0)
Paper Tray Capacity	50 sheets
Power Requirements	AC 100 to 240 V, 50/60 Hz
Input Current	3.4 to 1.4 A
Output Current	0.5 A/5 V (for UPA-WU10*)
Operating Temperature	41°F to 95°F (5°C to 35°C)
Operating Humidity	20% to 80% (no condensation allowed)
Storage and Transport Temperature	-4°F to 140°F (-20°C to 60°C)
Storage and Transport Humidity	20% to 80% (no condensation allowed)
Dimensions	Approx. 12 1/2 (W) x 8 1/8 (H) x 16 3/4 (D) inches (317 (W) x 207 (H) x 425 (D) mm)
Mass	Approx. 25.3 lbs (11.5 kg)
Supplied Accessories	Paper Holder (pink) (1) Paper Holder (blue) (1) Cleaning Ribbon (1) USB Cable 1-824-211-41 (SONY) (1) Before Using this Printer (1) Quick Guide (1) CD-ROM (1) Software License Agreement (1) Service Contact List (1) European Representative (1) UPC-R81MD Letter size media (50 sheet starter pack & ribbon)

Print Media

- UPC-R80MD: A4 size**
Contents: Paper roll for 50 prints x 2
Ink ribbon x 2
- UPC-R81MD: Letter size**
Contents: Paper roll for 50 prints x 2
Ink ribbon x 2



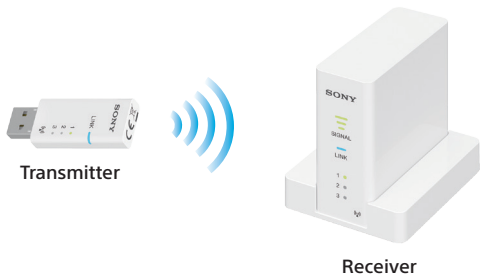
Dimensions



Unit: inches

Wireless Print System (Optional accessories)

UPA-WU10
Consists of Transmitter and Receiver



For illustration purposes only

The UP-DR80MD is distributed to the US (FDA) and EU (MDD) as a medical device and satisfies product safety standards (e.g. IEC 60601-1).

Sony Electronics Inc.
1 Sony Drive
Park Ridge, NJ 07656
www.sony.com/medical

©2017 Sony Electronics Inc. All rights reserved. Reproduction in whole or in part without written permission is prohibited. Features and specifications are subject to change without notice. All non-metric weights and measurements are approximate. Sony is a registered trademark of Sony Corporation. All other trademarks are the property of their respective owners.

Caution: Federal (USA) law restricts this device to sale by or on the order of a physician or other appropriately licensed medical professional.

Caution: See product labeling for indications, contraindications, warnings, cautions and directions for use.

(1/17)