



PMW-10MD Full HD Medical Grade Camera System

The PMW-10MD Full HD Medical Grade camera system combines outstanding image quality with the convenience of a built-in HD recorder. Its compact size and remote head design allow for simple integration into a wide variety of medical and scientific applications.

The camera is equipped with 3 one half-inch (1920 x 1080) Exmor™ CMOS sensors, each delivering over 2 million pixels. Although small in size, the PMW-10MD delivers a superb video image, excellent sensitivity of F10, and a remarkable signal to noise ratio of 54 dB. Combine these specifications with a high horizontal resolution of 1,000 TV lines and a wide dynamic range of 450%, the PMW-10MD stands out as one of the best camera systems available for medical applications.

- Compact camera head measures approximately 1.4" x 1.77" x 1.96"
- Designed for mounting above the OR table or on a surgical microscope using optional lenses and optical adapters
- DVI-D Output support 1080/59.94P and 1080/50P
- Built-in recorder features two modes HQ 1920 x 1080 @ 35Mbps or SP 1440 x 1080 @ 25Mb/s



Specifications

General

Power Requirements	AC 100 to 240 V, 50/60 Hz
Power Consumption	20W Approx.
Operating Temperature	+32 to +104° F (0 to +40° C)
Dimensions (W x H x D)	Camera Head Unit: 35 x 45 x 50mm Approx. Camera Control Unit: 200 x 88 x 240mm Approx.
Weight	Camera Head Unit: 100g Approx. Camera Control Unit: 2.5kg Approx.

Camera

Pickup Device	3-chip 1/2-inch type Exmor Full HD CMOS
Effective Picture Elements	1920 x 1080
Lens Mount	C mount
Optical System	F2.2 prism system
Sensitivity (2000 lx, 89.9% reflectance)	F10 (typical) (1920 x 1080/59.94i mode)
Minimum Illumination	0.14 lx (typical) (1920 x 1080/59.94i mode, F2.2, +21 dB gain, with 64-frame accumulation)
S/N Ratio	54 dB (Y) (typical)
Horizontal Resolution	1000 TV Lines
Gain	0 to 21dB

Recording

Recording Format	
Video	MPEG-2 Long GOP HQ mode: VBR, maximum bit rate: 35 Mb/s, MPEG-2 MP@HL SP mode: CBR, 25 Mb/s, MPEG-2 MP@H14
Audio	Linear PCM (2ch, 16-bit, 48kHz)
Recording Frame Rate	
NTSC Setting	HQ mode: 1920 x 1080/59.94i SP mode: 1440 x 1080/59.94i
PAL Setting	HQ mode: 1920 x 1080/50i SP mode: 1440 x 1080/50i
Recording/Playback Time	
HQ Mode	Approx. 100 min. with SBP-32 (32 GB) memory card Approx. 50 min. with SBP-16 (16 GB) memory card Approx. 25 min. with SBP-8 (8 GB) memory card
SP Mode	Approx. 140 min. with SBP-32 (32 GB) memory card Approx. 70 min. with SBP-16 (16 GB) memory card Approx. 35 min. with SBP-8 (8 GB) memory card

Still Image Recording

Recording Format	I JPEG 1920 X 1080
------------------	--------------------

Signal Input/Output

MIC Input	Stereo mini-jack (x 1)
Composite Output	BNC (x 1)
S-Video Output	mini DIN 4-pin (x 1)
Component Output	D-Sub 15-pin (x 1)
DVI-D Output	DVI connector 19-pin (x 1)
HD SDI Output	BNC (x 2)
EXT SYNC Input	BNC (x 1)
FS,TRIG IO	Stereo mini-jack (x 1)
Remote	D-sub 15-pin (x1)

Media Slot

Type	ExpressCard/34 (x 2)
Interface	ExpressCard™ compatible

Accessory

Camera Cable	I CCMC-T05, T10, T15, T20 (One cable is required for system operation.)
--------------	---

©2009 Sony Corporation. All rights reserved. Reproduction in whole or in part without written permission is prohibited. Features and specifications are subject to change without notice. All non-metric weights and measures are approximate. Sony, Exmor, SxS are trademarks of Sony. ExpressCard is a trademark of PCMCIA.

Caution: Federal (USA) law restricts this device to sale by or on the order of a physician or other appropriately licensed medical professional.
Caution: See product labeling for indications, contraindications, warnings, cautions and directions for use.

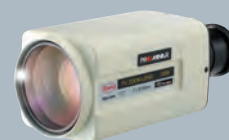
ME-PMW-10MD

Optional Accessories

- SBP-32/16/8 SxS™ Pro Memory Cards
- CCMC-T20/15/10/05 Camera Cables
- Kowa-LMZ 856MD Short distance HDTV Lens
- SBAC-US10 SxS Memory Card USB Reader/Writer



Camera Cables: CCMC-T05, CCMC-T10, CCMC-T15, CCMC-T20



Kowa Lens: LMZ-856MD



PMW-10MD Front Panel



PMW-10MD Rear Panel

SONY

Sony Electronics Inc.
1 Sony Drive
Park Ridge, NJ 07656

www.sony.com/medical