

Exploiting CO₂'s ability to minimize luminal distension, the UCR features easy operation, a selectable flow rate, and a compact design



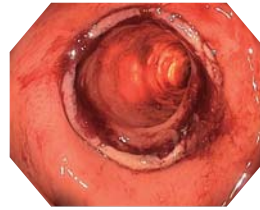
Main Features

- About 150 times faster than conventional air, carbon dioxide's rapid absorption properties keep abdominal distension and related pain to a minimum during the procedure and speed up recovery afterwards.
- Easy, reliable one-button start/stop operation, pressure display, and timer function to automate CO₂ insufflation shutoff.
- Compact design allows the UCR to fit easily on an endoscopic workstation.
- Three controlled flow rate settings are available, by using the appropriate corresponding tubing. Tubes are optional.

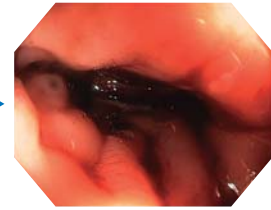
Rapid absorption of CO₂ gas

Carbon dioxide is absorbed by human tissue about 150 times faster than conventional air.

With CO₂ insufflation



Right after insufflation



2 minutes later

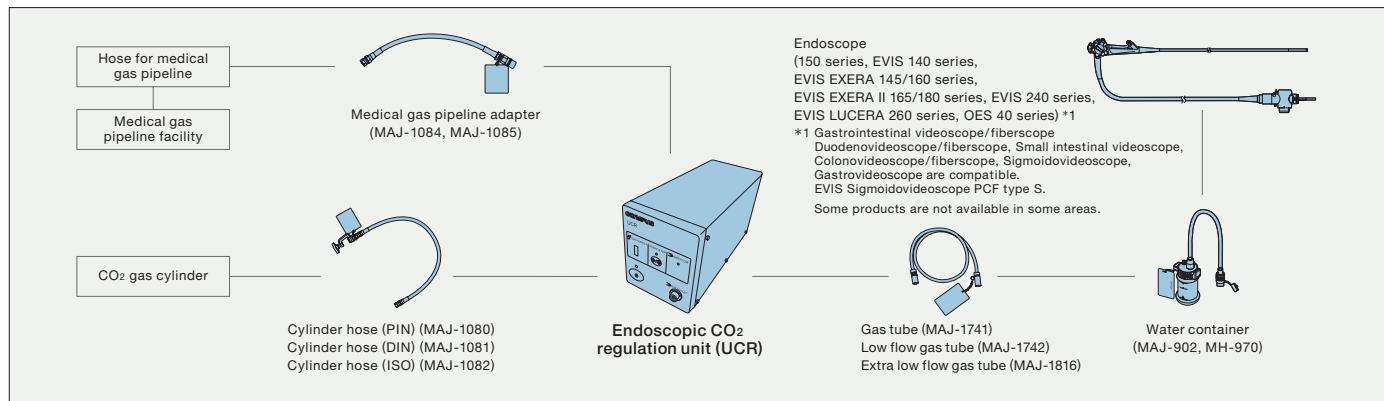
* Sample image demonstrates absorption rate following CO₂ insufflation. Individual results may vary.

Specifications

Power requirements	Voltage (AC)	100–120 V (USA), 100–240 V (Other areas)
	Frequency	50/60 Hz
	Input	40 VA
	Voltage fluctuation	Within ±10%
Dimensions	125 (W) × 300 (D) × 150 (H) mm (housing dimensions)	
Weight	4.9 kg	
Applicable gas	CO ₂ gas for medical use (Connectable to CO ₂ cylinder or medical gas pipeline)	
Air feeding pressure	Maximum pressure feed	45 kPa



System Chart



Specifications, design and accessories are subject to change without any notice or obligation on the part of the manufacturer.

OLYMPUS[®]

OLYMPUS MEDICAL SYSTEMS CORP.
Shinjuku Monolith, 3-1 Nishi-Shinjuku 2-chome, Shinjuku-ku, Tokyo 163-0914, Japan
OLYMPUS MEDICAL SYSTEMS EUROPA GMBH
Postfach 10 49 08, 20034 Hamburg / Wendenstrasse 14-18, 20097 Hamburg, Germany
OLYMPUS AMERICA INC.
3500 Corporate Parkway, P.O. Box 810, Center Valley, PA 18034-0610, U.S.A.
OLYMPUS LATIN AMERICA, INC.
5301 Blue Lagoon Drive, Suite 290 Miami, Florida 33126-2097, U.S.A.
OLYMPUS KEYMED GROUP LTD.
Keymed House, Stock Road, Southend-on-Sea, Essex SS2 5QH, England
OLYMPUS SINGAPORE PTE LTD.
481B River Valley Road #12-01/04, Valley Point Office Tower, Singapore 248373

OLYMPUS HONG KONG AND CHINA LIMITED
L43, Office Tower, Langham Place, 8 Argyle Street, Mongkok, Kowloon, Hong Kong
OLYMPUS (BEIJING) SALES & SERVICE CO., LTD.
Room 1202, NC1 Tower, A12 Jianguomenwai Avenue Chaoyang District Beijing, 100022, China
OLYMPUS MOSCOW LIMITED LIABILITY COMPANY
117071, Moscow, Malaya Kaluzhskaya 19, bld. 1, fl.2, Russia
OLYMPUS AUSTRALIA PTY LTD
31 Gilby Road, Mount Waverley, VIC, 3149, Australia
OLYMPUS KOREA CO., LTD.
4F, 5F, Gyeongam Bldg., 157-27, Samsong-dong, Gangnam-ku, Seoul, Korea