

# QUADRA96® MODEL 320

96-Well Simultaneous Pipetting



## Six Station Automated Shuttle

- Automates complete assay protocols
- Pipette multiple reagents in one pass
- Custom reservoirs for Standards & Controls
- Flow through tip washing station
- Bar code reader for sample tracking

## Programming Options

- Stand alone—using the front panel
- Offline PC programming—using Quadload software
- Windows programming—using Quadra Command software
- Remote from Host—in robotic integration

## Precision Pipetting

- Air Displacement or Positive Displacement
- Volumes from 5µL to 450µL
- Cv of 2% at 10µL

## Functional Description

The Quadra96® Model 320 is a versatile automated workstation. It is a true 96 well high throughput pipetter equipped with 96 disposable tips—450µl max volume. The 450µL capacity tips and six station shuttle are suited to a variety of applications including replicate plating, SPE (Solid Phase Extraction), liquid/liquid extraction among many more.

## Disposable Tip Assembly

- Polypropylene disposable tips
- Tips easily loaded or removed
- Tips reach bottom of deepwell plates



# TOMTEC

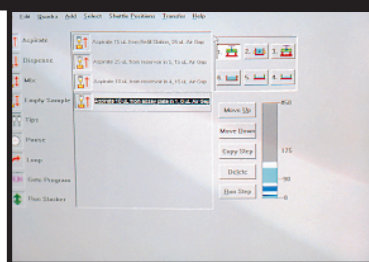
## Pipeline Pipetting

The unique Quadra tips are designed to aspirate multiple reagents in one pass, using air gap separations. The result of this pipeline pipetting is speed in processing, plus better precision by washing out small volumes with the larger volumes of other reagents.



## Fully Programmable

Three types of programming are available to meet the users specific need. Stand alone using the front panel, or PC programming using Quadload software, offers 40 program files in memory. Windows programming using Quadra Command software offers full PC control. It's the users choice.



## Performance Accessories

Many accessories are available to extend the capabilities of the Quadra96® Model 320. Tip Washing Systems – both Ultrasonic and Flow Through, Constant Level Recirculating Reservoir, Barcode Reader, Reagent Reservoir Stirrer, Thermal Retention Reservoir, Custom Reservoirs for Standards & Controls and Stackers for automated plate handling are all designed to add performance value.

## Technical Information

### Utilities

Input Power: 90-240VAC, 50/60Hz  
Power Consumption: 230 WATT Nominal

### Communication

- No Parity
- Baud rate 2400
- One stop bit
- Eight bits per character

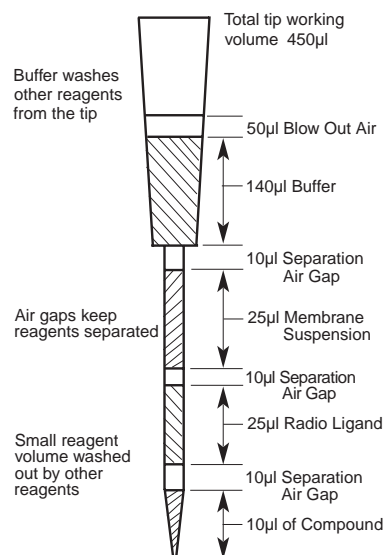
### Physical

Unit Dimensions: 25" x 29" x 22"  
(W x H x D)

Net Weight: 125 lbs

## SPECIAL TIP DESIGN

Aspirates multiple reagents and keeps them separated with air gaps.



Tips are retained as a 96 place rack to allow loading and unloading as a unit.

## Ordering Information

- Quadra96® Model 320  
6-Station Automatic Shuttle  
Cat. No. 196-320
- Standard Orifice (0.036)  
Polypropylene Pipette Tips,  
(96 tips/rack, 50 racks/carton)  
Cat. No. 196-205
- Micro Orifice (0.026)  
Polypropylene Pipette Tips,  
(96 tips/rack, 50 racks/carton)  
Cat. No. 196-206
- Sterilized Polypropylene Pipette  
Tips are available in both orifices,  
please contact Tomtec for more  
information.

*Note: European and Japanese models are also available,  
contact the Tomtec sales department for information.*

# TOMTEC

1000 SHERMAN AVE., HAMDEN, CT 06514  
PH: 203.281-6790 FAX 203.248-5724  
1-877-TOMTEC-3 <http://www.tomtec.com>