

# ACUSON Sequoia 512 Ultrasound System

## Transducers

[www.siemens.com/medical](http://www.siemens.com/medical)

**SIEMENS**  
medical





### 8C4 Transducer

<b>Frequency Bandwidth:</b>	8 – 4 MHz
<b>Compatible With:</b>	ACUSON Sequoia™ C512 echocardiography system
<b>Applications:</b>	Small adult and pediatric abdominal, OB/GYN, abdominal vascular, fetal heart

#### Features:

- User-selectable Wideband MultiHertz™ multiple frequency imaging
- Color M-mode for fetal echo studies
- Native™ Tissue Harmonic Imaging
- Wide view phased array



### 6C2 Transducer

<b>Frequency Bandwidth:</b>	6 – 2 MHz
<b>Compatible With:</b>	ACUSON Sequoia C512 echocardiography system ACUSON Aspen™ ultrasound system
<b>Applications:</b>	Adult and pediatric abdominal, OB/GYN, abdominal vascular, fetal heart

#### Features:

- Curved Vector™ wide-view imaging format
- Ergonomically designed form factor
- Hanafy Lens transducer technology
- User-selectable wideband multiHertz imaging
- Native Tissue Harmonics

\* At the time of publication, the US Food and Drug Administration cleared ultrasound agents only for use in LVO. Check the current regulation for the country in which you are using the system for contrast agent clearance.



### 4C1 Transducer

<b>Frequency Bandwidth:</b>	4 – 1 MHz
<b>Compatible With:</b>	ACUSON Sequoia C512 echocardiography system ACUSON Aspen ultrasound system
<b>Applications:</b>	Adult abdominal, OB/GYN, fetal heart, Abdominal vascular, typical and technically difficult patients

#### Features:

- Curved vector imaging format
- Hanafy Lens transducer technology
- User-selectable Wideband MultiHertz imaging
- Native tissue harmonics
- Clarify™ vascular enhancement technology
- Cadence™ contrast pulse sequencing technology\*
- Excellent penetration

\* At the time of publication, the US Food and Drug Administration cleared ultrasound agents only for use in LVO. Check the current regulation for the country in which you are using the system for contrast agent clearance.



### 10V4 Transducer

<b>Frequency Bandwidth:</b>	10 – 4 MHz
<b>Compatible With:</b>	ACUSON Sequoia C512 echocardiography system ACUSON Sequoia™ C256 echocardiography system
<b>Applications:</b>	Neonatal head, neonatal cardiac, neonatal abdomen

#### Features:

- User-selectable Wideband MultiHertz imaging
- Native tissue harmonic imaging
- Vector imaging format

Requires cardiac package



### 4V1 Transducer

<b>Frequency Bandwidth:</b>	4 – 1 MHz
<b>Compatible With:</b>	ACUSON Sequoia C512 echocardiography system ACUSON Aspen ultrasound system
<b>Applications:</b>	General and deep abdominal, OB/GYN, abdominal vascular, fetal heart, contrast agent imaging

#### Features:

- Hanafy Lens transducer technology
- Vector™ wide-view imaging format
- Excellent penetration
- User-selectable Wideband MultiHertz imaging
- Native tissue harmonics
- Cadence contrast pulse sequencing technology\*

\* At the time of publication, the US Food and Drug Administration cleared ultrasound agents only for use in LVO. Check the current regulation for the country in which you are using the system for contrast agent clearance.



### 10V4c Transducer

<b>Frequency Bandwidth:</b>	10 – 4 MHz
<b>Compatible With:</b>	ACUSON Sequoia C512 ultrasound system
<b>Applications:</b>	Neonatal and pediatric echocardiography

#### Features:

- MICROSON™ high resolution transducer family
- Vector™ wide-view imaging format phased array
- User-selectable Wideband MultiHertz multiple frequency imaging

Requires cardiac package

\* At the time of publication, the US Food and Drug Administration cleared ultrasound agents only for use in LVO. Check the current regulation for the country in which you are using the system for contrast agent clearance.



### 8V3c-S Transducer

<b>Frequency Bandwidth:</b>	8 – 3 MHz
<b>Compatible With:</b>	ACUSON Sequoia C512 echocardiography system
<b>Applications:</b>	Pediatric transtherasic, fetal echocardiography

#### Features:

- Hanafy Lens transducer technology
- User-selectable Wideband MultiHertz imaging
- Native tissue harmonic imaging
- DTI™ Doppler tissue imaging capability
- Vector™ wide-view imaging format phased array

Requires cardiac package



### 7V3c Transducer

<b>Frequency Bandwidth:</b>	7 – 3 MHz
<b>Compatible With:</b>	ACUSON Sequoia C512 echocardiography system ACUSON Sequoia C256 echocardiography system
<b>Applications:</b>	Transthoracic adult and pediatric echocardiography stress echo, coronary artery imaging, internal mammary artery imaging

#### Features:

- User-selectable Wideband MultiHertz imaging
- DTI Doppler tissue imaging capability
- Vector™ wide-view imaging format phased array

Requires cardiac package



### 4V1c Transducer

<b>Frequency Bandwidth:</b>	4 – 1 MHz
<b>Compatible With:</b>	ACUSON Sequoia C512 echocardiography system
<b>Applications:</b>	Transthoracic adult and pediatric echo- cardiography, stress echo, coronary artery imaging, Contrast agent studies, transcranial with 12.0

#### Features:

- Hanafy Lens transducer technology
- Vector™ wide view imaging format phased array
- RF shielding
- User-selectable Wideband MultiHertz imaging
- Cadence™ contrast pulse sequencing technology\*

Requires cardiac package

\* At the time of publication, the US Food and Drug Administration cleared ultrasound agents only for use in LVO. Check the current regulation for the country in which you are using the system for contrast agent clearance.



### 3V2c Transducer

<b>Frequency Bandwidth:</b>	3 – 2 MHz
<b>Compatible With:</b>	ACUSON Sequoia C512 echocardiography system ACUSON Sequoia C256 echocardiography system
<b>Applications:</b>	Transthoracic adult echocardiography, stress echo, contrast agent studies, adult and pediatric transcranial vascular, transorbital vascular

#### Features:

- Vector™ wide-view imaging format phased array
- User-selectable Wideband MultiHertz imaging
- Cadence contrast pulse sequencing technology
- DTI Doppler tissue imaging

Requires cardiac package

\* At the time of publication, the US Food and Drug Administration cleared ultrasound agents only for use in LVO. Check the current regulation for the country in which you are using the system for contrast agent clearance.





### 17L5 HD Transducer

<b>Frequency Bandwidth:</b>	17 – 5 MHz
<b>Compatible With:</b>	ACUSON Sequoia C512 echocardiography system
<b>Applications:</b>	Small parts, breast, musculoskeletal, superficial imaging, intraoperative, superficial vascular, contrast agent imaging

#### Features:

- Hanafy Lens transducer technology
- Patented ergonomic design with Elastogrip™ soft elastomeric coating
- Linear and Vector™ wide-view imaging format
- User-selectable Wideband MultiHertz imaging
- Advanced SieClear™ spatial compounding
- Native tissue harmonic imaging
- Clarify vascular enhancement technology
- Cadence contrast pulse sequencing technology\*

\* At the time of publication, the US Food and Drug Administration cleared ultrasound agents only for use in LVO. Check the current regulation for the country in which you are using the system for contrast agent clearance.



### 15L8 Transducer

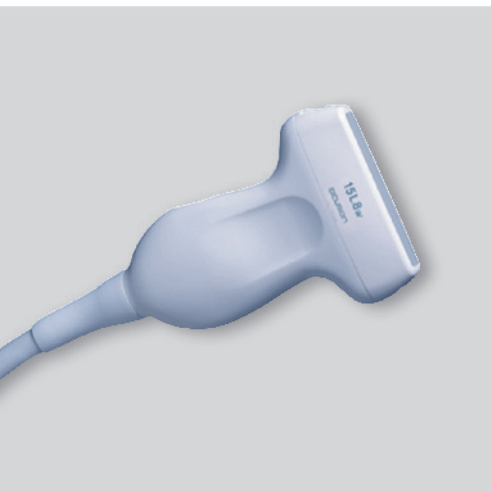
<b>Frequency Bandwidth:</b>	15 – 8 MHz
<b>Compatible With:</b>	ACUSON Sequoia C512 echocardiography system ACUSON Sequoia C256 echocardiography system
<b>Applications:</b>	Adult, pediatric and neonatal superficial imaging, targeted breast lesions, thyroid, testicular, musculoskeletal, superficial vascular, intraoperative, transgenic mouse heart scanning

#### Features:

- Hanafy Lens transducer technology
- Extra long cable
- User-selectable Wideband MultiHertz imaging
- Native tissue harmonic imaging
- Cadence contrast pulse sequencing technology\*

Requires cardiac package

\* At the time of publication, the US Food and Drug Administration cleared ultrasound agents only for use in LVO. Check the current regulation for the country in which you are using the system for contrast agent clearance.



### 15L8w Transducer

<b>Frequency Bandwidth:</b>	15 – 8 MHz
<b>Compatible With:</b>	ACUSON Sequoia C512 echocardiology system
<b>Applications:</b>	Adult, pediatric and neonatal superficial imaging, breast, thyroid, testicular, musculoskeletal, superficial vascular

#### Features:

- Hanafy Lens transducer technology
- Extra long cable
- User-selectable Wideband MultiHertz imaging
- Spatial compounding pulse
- Cadence contrast pulse sequencing technology\*
- Native tissue harmonic imaging

\* At the time of publication, the US Food and Drug Administration cleared ultrasound agents only for use in LVO. Check the current regulation for the country in which you are using the system for contrast agent clearance.



### 9L4 Transducer

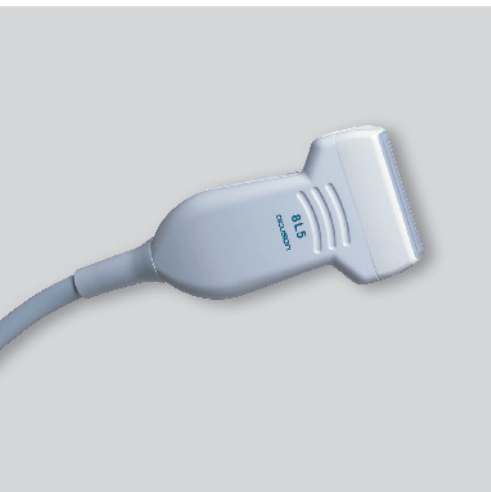
<b>Frequency Bandwidth:</b>	9 – 4 MHz
<b>Compatible With:</b>	ACUSON Sequoia C512 echocardiography system
<b>Applications:</b>	Cerebrovascular, peripheral vascular, superficial vascular, superficial imaging, intraoperative, contrast agent imaging

#### Features:

- Multi-D™ array transducer technology
- Triplex imaging
- Linear and Vector wide-view imaging format
- User-selectable Wideband MultiHertz imaging
- Native tissue harmonics
- Advanced SieClear spatial compounding
- Cadence contrast pulse sequencing technology\*

\* At the time of publication, the US Food and Drug Administration cleared ultrasound agents only for use in LVO. Check the current regulation for the country in which you are using the system for contrast agent clearance.





### 8L5 Transducer

<b>Frequency Bandwidth:</b>	8 – 5 MHz
<b>Compatible With:</b>	ACUSON Sequoia C512 echocardiography system ACUSON Sequoia C256 echocardiography system
<b>Applications:</b>	Small parts, musculoskeletal, peripheral vascular extracranial vascular, breast, medium depth arterial and venus studies

- Features:**
- User-selectable Wideband MultiHertz imaging



### 8L5T Transducer

<b>Frequency Bandwidth:</b>	8 – 5 MHz
<b>Compatible With:</b>	ACUSON Sequoia C512 echocardiography system ACUSON Sequoia C256 echocardiography system
<b>Applications:</b>	Intraoperative liver, kidney, pancreas, vasculature, epiaortic and epicardial imaging

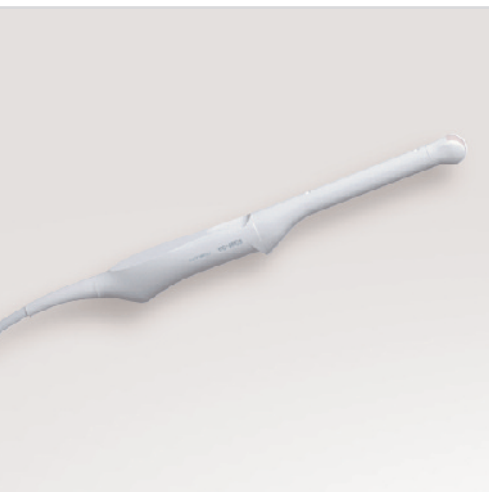
- Features:**
- Side-fire "T" shape linear array design
  - Compatible with sterile transducer sleeves
  - Extra long cable
  - Extended MultiHertz multiple frequency imaging



### 6L3 Transducer

<b>Frequency Bandwidth:</b>	6 – 3 MHz
<b>Compatible With:</b>	ACUSON Sequoia C512 echocardiography system ACUSON Sequoia C256 echocardiography system
<b>Applications:</b>	Peripheral vascular, extracranial vascular, medium and deep arterial, venus studies, and targeted abdominal

- Features:**
- User-selectable Wideband MultiHertz imaging



### EC-10C5 Transducer

**Frequency Bandwidth:** 10 – 5 MHz

**Applications:** Endocavity, prostate, seminal vesicles, urinary bladder, urodynamic studies, transrectal biopsies, endovaginal OB, general GYN

**Features:**

- Unique ergonomic design
- End-fire multiplane orientation
- User-selectable Wideband MultiHertz imaging
- Wide view phased array
- Tightly curved format



### EV-8C4 Transducer

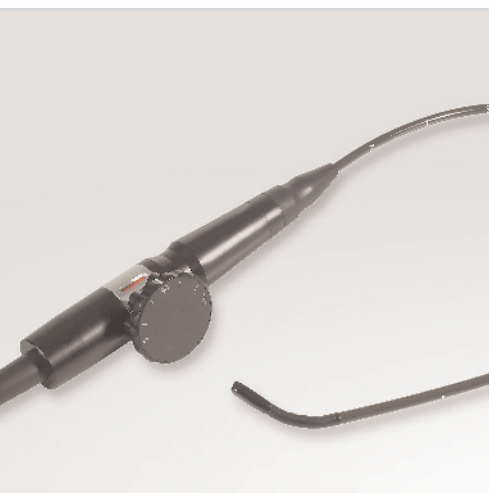
**Frequency Bandwidth:** 8 – 4 MHz

**Applications:** Endovaginal obstetrics, endovaginal gynecology

**Features:**

- Tightly curved format
- Wide field-of-view
- User-selectable Wideband MultiHertz imaging
- Cadence contrast pulse sequencing technology\*

\* At the time of publication, the US Food and Drug Administration cleared ultrasound agents only for use in LVO. Check the current regulation for the country in which you are using the system for contrast agent clearance.



### V7M Transducer

**Frequency Bandwidth:** 8 – 3 MHz

**Compatible With:** ACUSON Sequoia C512 echocardiography system  
ACUSON Sequoia C256 echocardiography system

**Applications:** Pediatric and adult transesophageal multiplane echocardiography

**Features:**

- Endoscope dimensions: diameter = 7.0, length = 70 cm
- Small tip size for increased patient comfort: width = 10.9 mm, thickness = 8.0 mm, circumference = 22 mm
- Ergonomic design featuring one-hand control
- Manual rotation: 0° – 180°
- Vector™ wide-view imaging format phased array
- User-selectable Wideband MultiHertz imaging
- DTI Doppler tissue imaging

Requires cardiac package



### V5Ms Transducer

<b>Frequency Bandwidth:</b>	7 – 3 MHz
<b>Compatible With:</b>	ACUSON Antares ultrasound system ACUSON Sequoia C256 echocardiography system ACUSON CV70™ cardiovascular system ACUSON Cypress™ cardiovascular system ACUSON Aspen ultrasound system ACUSON 128XP/10C™ echocardiography system
<b>Applications:</b>	Transesophageal multiplane echocardiography

#### Features:

- Endoscope diameter = 10.5, length = 110 cm
- Adult tip size: width = 14.5, height = 11.5
- Ergonomic design featuring one-hand control with motorized variable speed rotation – 90° per sec.
- RF shielding
- Vector™ wide-view imaging format phased array
- User-selectable Wideband MultiHertz imaging
- DTI Doppler tissue imaging
- syngo® fourSight™ TEE view
- syngo® Mitral Valve Assessment

Requires cardiac package



### AcuNav 10F<sup>+</sup>

<b>Frequency Bandwidth:</b>	2.0 - 10.0 MHz
<b>Compatible With:</b>	ACUSON Sequoia C512 echocardiography system ACUSON Sequoia C256 echocardiography system ACUSON Cypress cardiovascular system ACUSON Aspen ultrasound system
<b>Applications:</b>	Adult intracardiac echocardiography

#### Features:

- 10 french catheter (3.3 mm diameter)
- 90 cm insertable length
- Sterile, single-use advanced miniaturization AcuNav™ ultrasound catheter family
- Reusable SwiftLink™ catheter connector
- Four-way steering in two planes: 160° in each direction
- Longitudinal side-fire imaging
- Vector™ wide-view imaging format
- DTI Doppler tissue imaging

Requires cardiac package

<sup>+</sup> For purchase or inquiries, contact Biosense Webster: USA (909-839-8500 and 800-729-9010), Belgium (32-2-352-1411), Asia Pacific (65) 6827-6100.



### AcuNav 8F<sup>+</sup>

<b>Frequency Bandwidth:</b>	2.0-10.0 MHz
<b>Compatible With:</b>	ACUSON Sequoia C512 echocardiography system ACUSON Sequoia C256 echocardiography system ACUSON CV70 cardiovascular system ACUSON Cypress cardiovascular system
<b>Applications:</b>	Adult intracardiac echocardiography

#### Features:

- 8 french catheter (2.7 mm diameter)
- 110 cm insertable length
- Sterile, single-use advanced miniaturization AcuNav ultrasound catheter family
- Reusable SwiftLink catheter connector
- Four-way steering in two planes: 160° in each direction
- Longitudinal side-fire imaging
- Vector™ wide-view imaging format
- DTI Doppler tissue imaging

Requires cardiac package

<sup>+</sup> For purchase or inquiries, contact Biosense Webster: USA (909-839-8500 and 800-729-9010), Belgium (32-2-352-1411), Asia Pacific (65) 6827-6100.



### Aux CW

<b>Frequency:</b>	2.0 MHz
<b>Compatible With:</b>	ACUSON Sequoia C512 echocardiography system ACUSON Sequoia C256 echocardiography platform ACUSON Aspen echocardiography platform ACUSON Aspen ultrasound platform
<b>Applications:</b>	Non-imaging, transthoracic adult and pediatric, continuous wave spectral Doppler echocardiography

#### Features:

- Continuous wave spectral Doppler mode
- Excellent intercostal, suprasternal and subcostal access
- Excellent penetration

Requires cardiac package

128XP/10C, ACUSON, AcuNav, Aspen, Cadence, Clarify, CV70, Cypress, DTI, Elastogrip, MICROSON, Multi-D, MultiHertz, Native, Sequoia, SieClear, SwiftLink and Vector are trademarks of Siemens Medical Solutions USA, Inc. and *syngo* is a registered trademark of Siemens AG.

Siemens Medical Solutions USA, Inc.  
Ultrasound Division  
1230 Shorebird Way  
P.O. Box 7393  
Mountain View, CA 94039-7393 USA

#### **Headquarters**

Siemens Medical Solutions USA  
51 Valley Stream Parkway  
Malvern, PA 19355-1406 USA  
Telephone: +1-888-826-9702  
[www.usa.siemens.com/medical](http://www.usa.siemens.com/medical)

#### **Contacts**

Europe: +49 9131 84-0  
Asia Pacific: +65 6341 0990  
Latin America: +1 786-845-0697

Siemens Medical Solutions USA, Inc.  
Ultrasound Division  
1230 Shorebird Way  
P.O. Box 7393  
Mountain View, CA 94039-7393 USA  
Telephone: +1-888-826-9702

Siemens **Medical**  
**Solutions** that help

© 10.2007, Siemens Medical Solutions USA, Inc.  
DS 1007