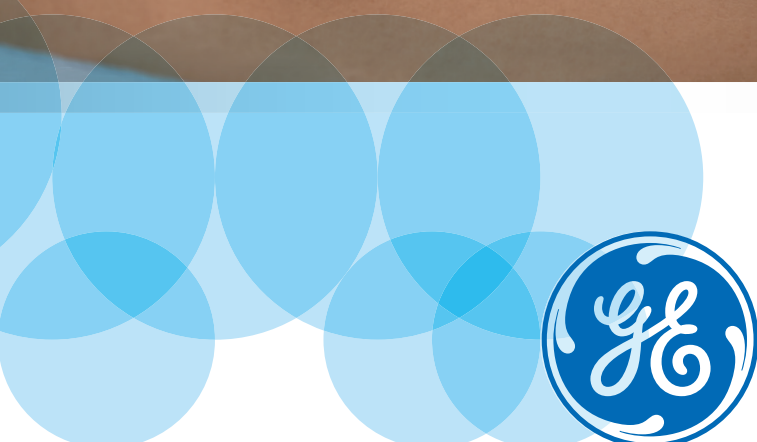


GE Healthcare



# Dual Vision. Let's take a look.

Vscan\* with Dual Probe

# DRIVE EFFICIENCY in your clinical routine.

Vscan with Dual Probe is a pocket-sized ultrasound tool that combines a linear-array transducer and a phased-array transducer to deliver both deep and shallow views.

The system is equipped with the first of its kind 2-in-1 probe that is always connected and ready to scan.

## Improve efficiency.

- Help increase clinical confidence with immediate visual validation of what you feel and hear
- Potentially shorten patient wait times
- Helps save time and cost with efficient workflow across your health system

## Lower costs.

- Potentially reduce exam times and costs<sup>1</sup>
- Helps reduce the cost of care by using more affordable portable technology<sup>2</sup>
- Reduce unnecessary echo referrals and discharge inaccuracy<sup>3</sup>

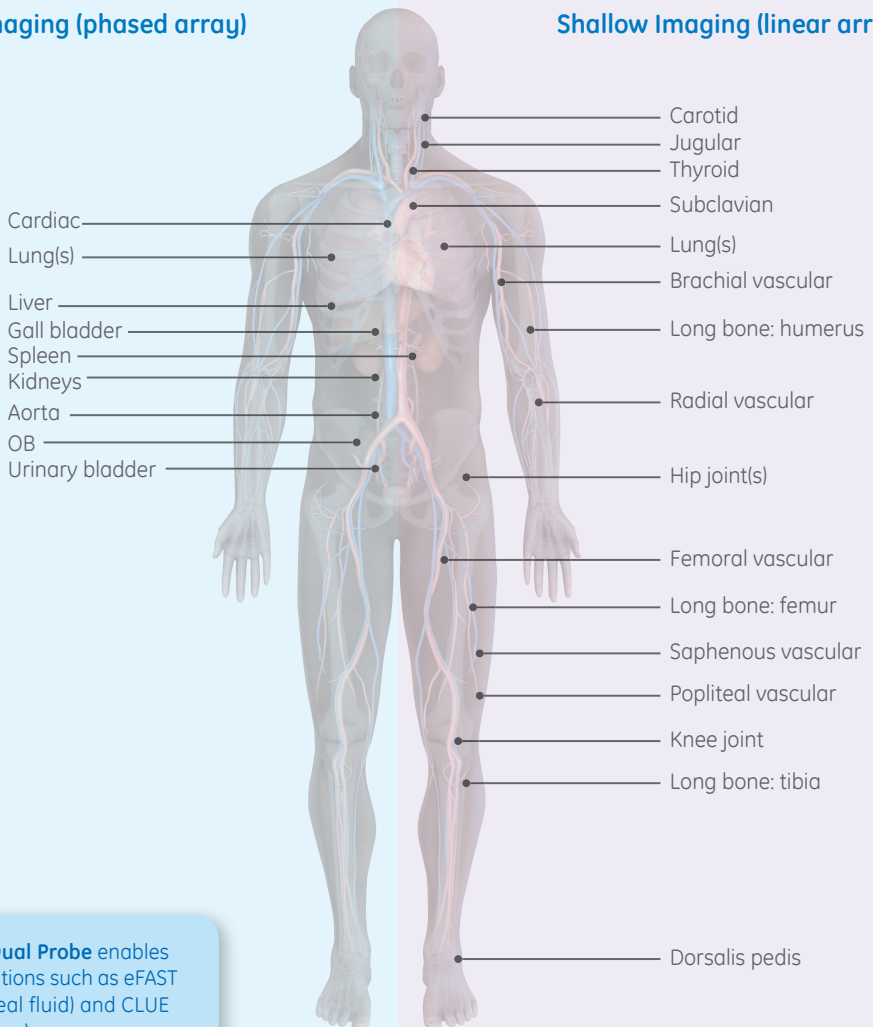


With two transducers in the same probe, you can cover 80% of the core ultrasound applications.<sup>†</sup>



### Deep Imaging (phased array)

### Shallow Imaging (linear array)



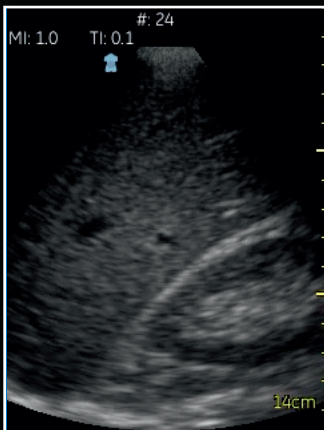
**Vscan with Dual Probe** enables triage applications such as eFAST (retroperitoneal fluid) and CLUE (heart and lungs)

# TWICE the transducer to help enhance your confidence.

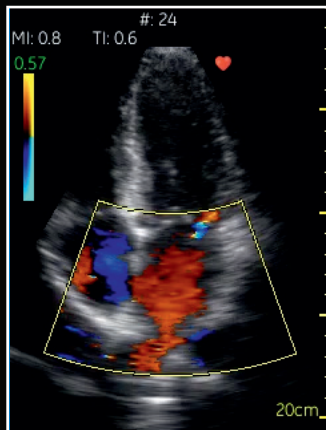
---

## Deep (phased array)

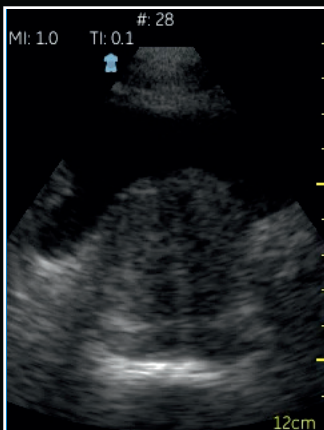
Right upper quadrant



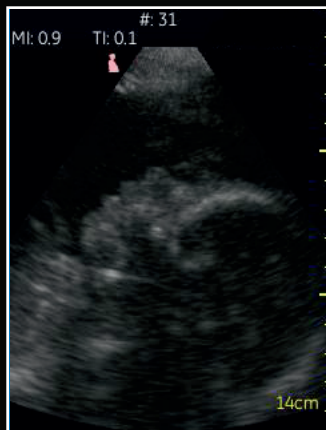
Cardiac



Urinary bladder

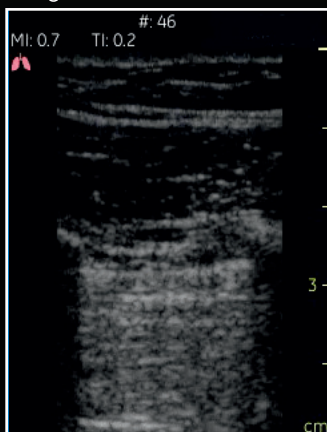


OB

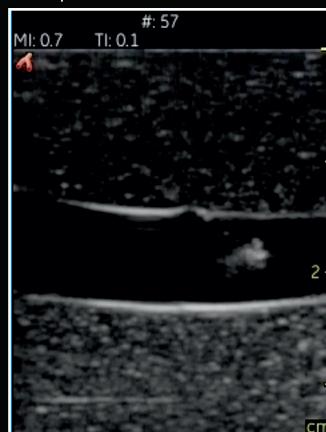


## Shallow (linear array)

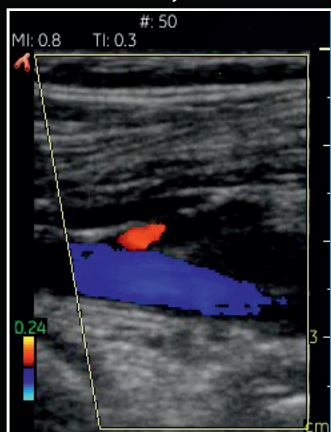
Lung



Line placement



Lower extremity vascular

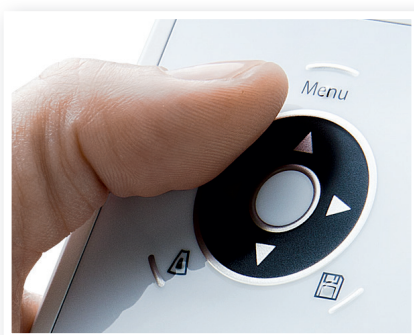


Musculoskeletal



# POCKET-SIZED convenience with easy CONTROL.

Vscan with Dual Probe puts ultrasound capabilities in your pocket to give you convenient access throughout the facility – when you need it, where you need it. Just flip it open to turn it on and start scanning.



## **Fingertip control.**

With just 4 buttons and arrow keys, you can access imaging presets, activate color flow, add voice annotation and optimize and store images.



## **Convenient connectivity.**

With Vscan gateway software, you can link images to patient data for more convenient and improved documentation that helps you evaluate and manage your patients.



Convenient presets for each of the main care areas – cardiac, abdomen, OB, lungs, vascular, and soft tissue – help simplify exams.





## References

<sup>1</sup> Diagnostic Accuracy of a Hand-Held Ultrasound Scanner in Routine Patients Referred for Echocardiography Christian Prinz, MD, and Jens-Uwe Voigt, MD, Leuven, Belgium; and Bad Oeynhausen, J Am Soc Echocardiogr. 2011 Feb;24(2):111-6. Epub 2010 Dec 3; The diagnostic accuracy is based on appropriate training and expertise and based upon comparison of GE Vivid 7 or E9.

<sup>2</sup> Usefulness of a New Miniaturized Echocardiographic System in Outpatient Cardiology Consultations as an Extension of Physical Examination Nuno Cardim, MD, PhD, Covadonga Fernandez Galfin, MD, Daniel Ferreira, MD, Adalia Aubele, MD, Julia Toste, Miguel Angel Cobos, MD, Vanda Carmelo, MD, Igor Nunes, MD, Antonio Gouveia Oliveira, MD, PhD, and Jose Zamorano, MD, PhD, Lisbon, Portugal; Madrid, Spain J Am Soc Echocardiogr. 2011 Feb; 24 (2): 117-24. Epub 2010 Nov 12.

<sup>3</sup> Pocket-sized imaging device effectiveness for ward based transthoracic studies. Silvia Gianstefani, Norman Catibog, Almira R. Whittaker, Antonios G Ioannidis, Francesco Vecchio, Peter T. Wathen, Abdel Douiri, Joseph Reiken, and Mark J. Monaghan. European Heart Journal; 2013.

† Based on internal assessment of American College of Emergency Physicians (ACEP) Policy Statement for Emergency Ultrasound Guidelines, 2008.

GE Healthcare GmbH  
Beethovenstr. 239  
42655 Solingen, Germany  
T +49 212-28 02-0  
F +49 212-28 02-28

[www.gehealthcare.com](http://www.gehealthcare.com)

### UNITED KINGDOM

GE Medical Systems Ultrasound  
71 Great North Road  
Hatfield, Hertfordshire  
AL9 5EN  
T +44 1707 263570  
F +44 1707 260065

### AMERICAS

GE Healthcare  
9900 West Innovation Drive  
Wauwatosa, WI 53226  
U.S.A.  
T +1 888 202 5582

### APAC

GE Healthcare Asia Pacific  
4-7-127, Asahigaoka, Hino-shi  
Tokyo 191-8503 Japan  
T +81 42 585 5111

### ANZ

T 1300 722 229 (Australia)  
T 0800 434 325 (New Zealand)

### ASEAN

T +65 6291 8528

### Korea

T +82 2 6201 3114

© 2014 General Electric Company – All rights reserved.

General Electric Company reserves the right to make changes in specifications and features shown herein, or discontinue the product described at any time without notice or obligation. Contact your GE Representative for the most current information.

GE, GE monogram, and Vscan are trademarks of General Electric Company or one of its subsidiaries.

JB23648XX

300-14-U026E



GE imagination at work